



SunLong Biotech Co.,LTD
Tel: 0086-571- 56623320 Fax:0086-571- 56623318
E-mail:sales@sunlongbiotech.com
www.sunlongbiotech.com

[KD-Validated] Anti-Forkhead box A1 Rabbit Monoclonal Antibody

Cat No.: KD-10385

Aliases:

FOXA1; Forkhead Box A1; HNF3A; Hepatocyte Nuclear Factor 3-Alpha; Forkhead Box Protein A1; Transcription Factor 3A; HNF-3-Alpha; HNF-3A; TCF-3A; TCF3A; Hepatocyte Nuclear Factor 3, Alpha

Background:

UniProt Entry: [P55317](#);NCBI Gene Entry: [3169](#)

Application Information

Molecular Weight: Predicted, 49 kDa, observed, 49 kDa Clonality: Rabbit monoclonal antibody Clone ID: 23GB1170 Spncies Reactivity: Human, Rat Applications Tested: Western Blotting (WB), Flow Cytometry (FCM), Immunocytochemistry (IC)

Immunogen

A synthesized peptide derived from human FOXA1

Isotype

Rabbit IgG

Storage Buffer

Supplied in PBS (pH 7.4) containing 50% glycerol, and 0.02% sodium azide.

Storage

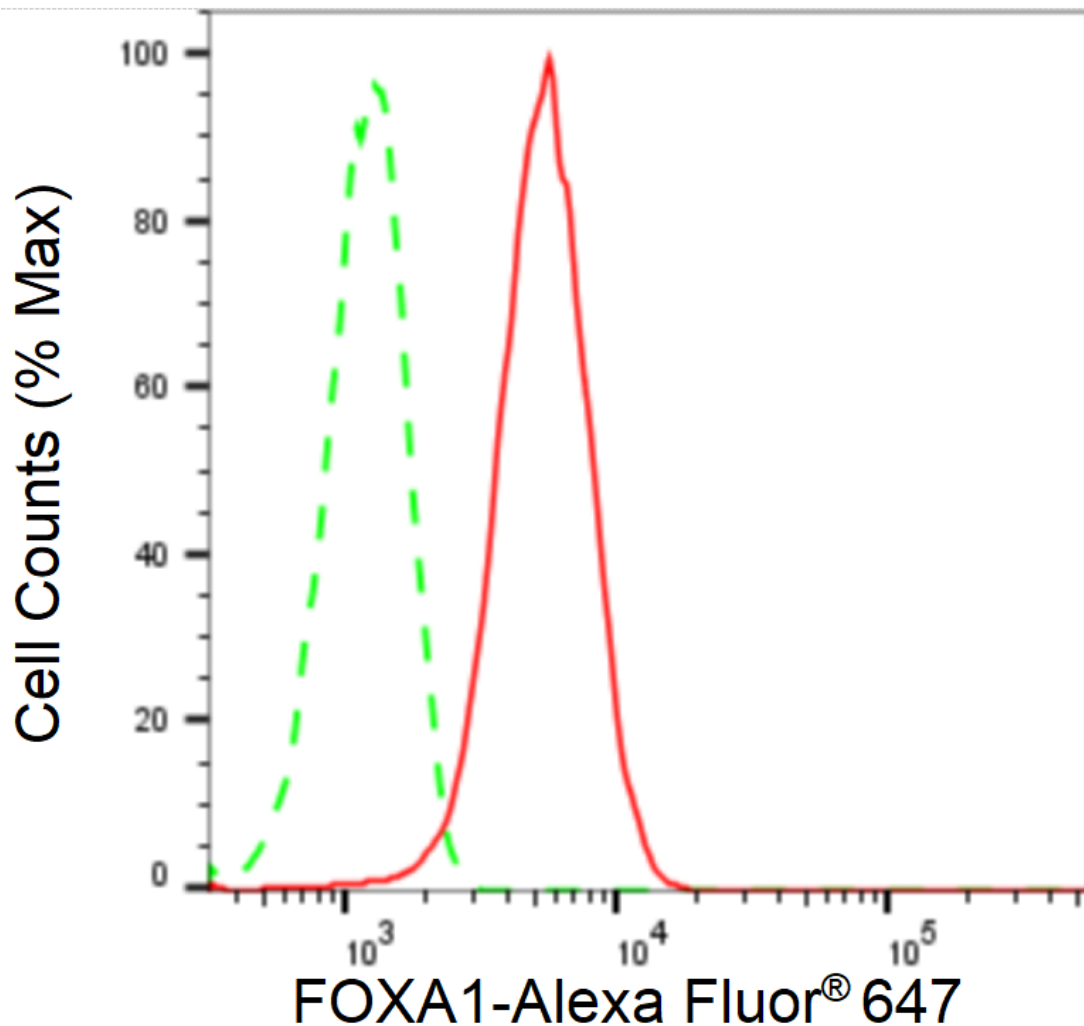
Store at -20 °C for one year.

Recommended Dilutions

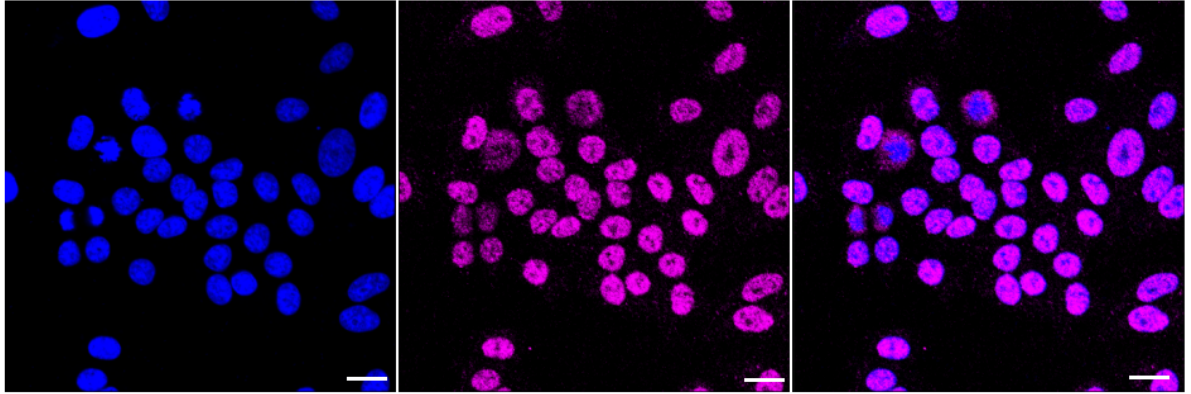
Western Blotting (WB): 1:1,000-1:5,000 Flow Cytometry (FCM): 1:2,000
Immunocytochemistry (IC): 1:1,000

Protocols

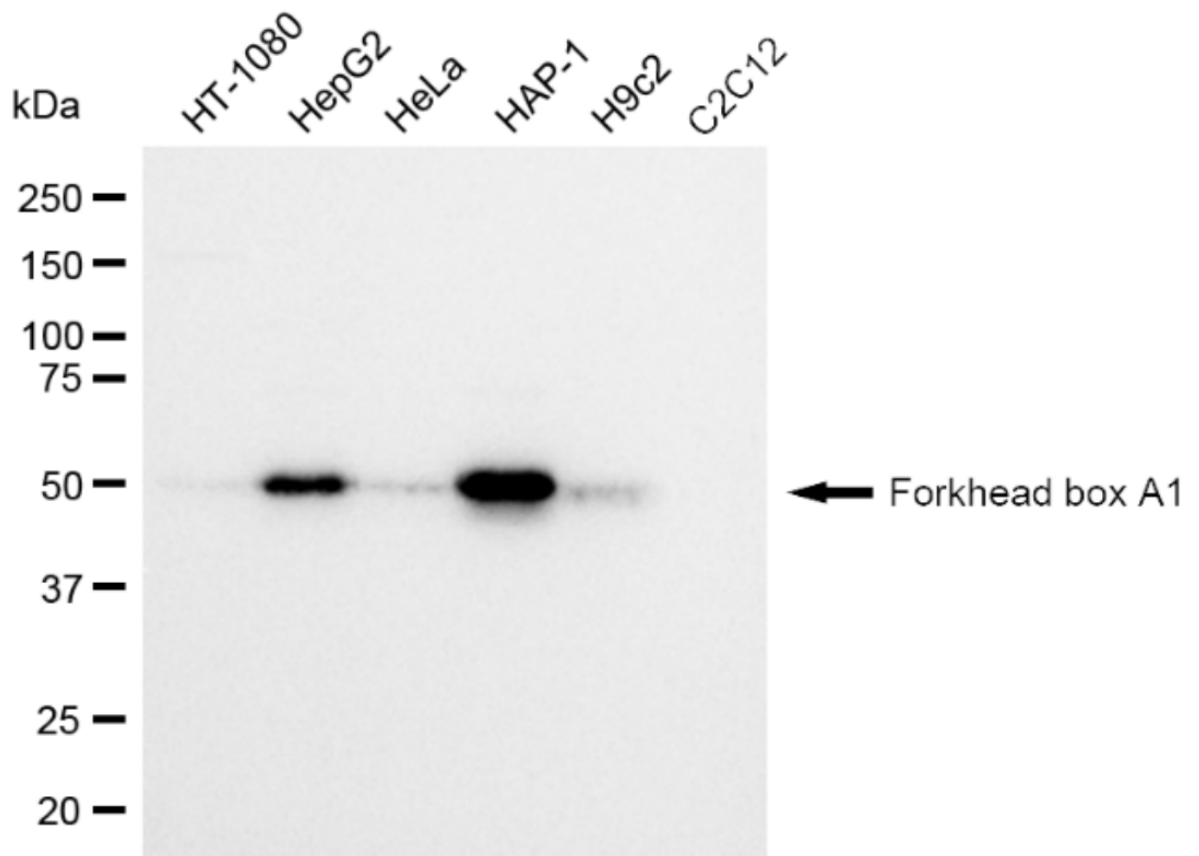
For general and specific antibody protocols please visit our website. Read all instructions before using this product.



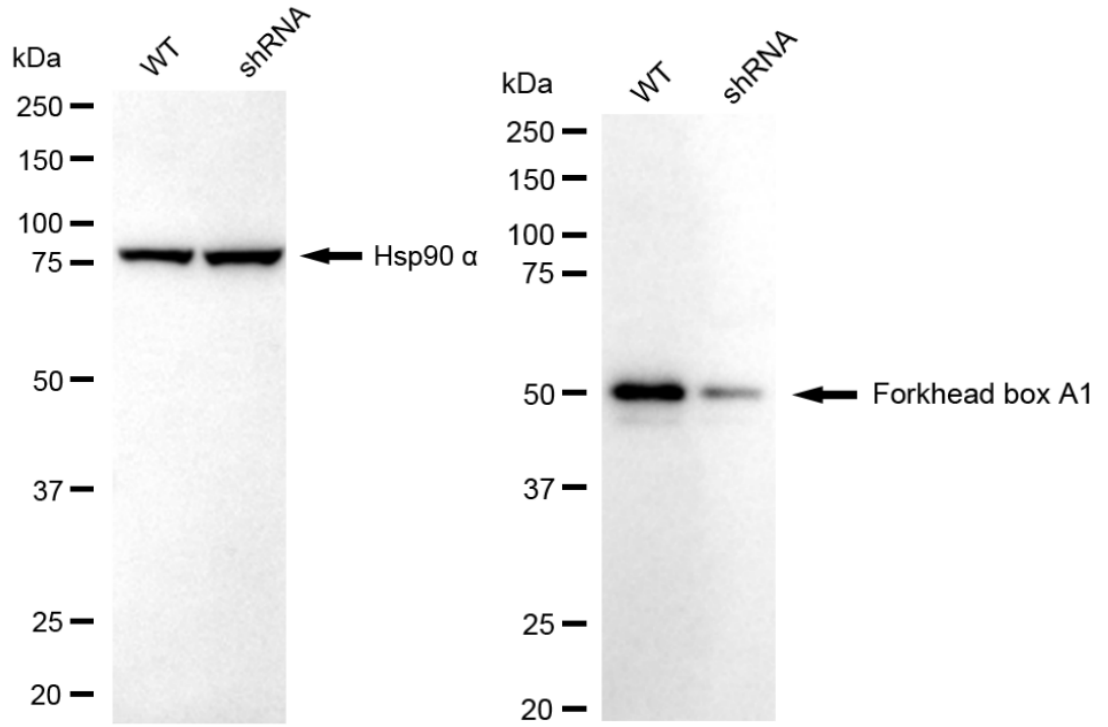
Flow cytometric analysis of FOXA1 expression in HepG2 cells using anti-FOXA1 antibody 1:2,000. Green, isotype control; red, FOXA1.



Immunocytochemical staining of HepG2 cells with Forkhead box A1 antibody 1:1,000. Nuclei were stained blue with DAPI; Forkhead box A1 was stained magenta with Alexa Fluor® 647. Images were taken using Leica stellaris 5. Protein abundance based on laser Intensity and smart gain: Medium. Scale bar: 20 μ m.



Western blotting analysis using anti-Forkhead box A1 antibody 1:5,000 and HRP-conjugated goat anti-rabbit secondary antibody 1:20,000 respectively. Image was developed using FeQ™ ECL Substrate Kit .



Western blotting analysis using anti-forkhead box A1 antibody 1:5,000 and HRP-conjugated goat anti-rabbit secondary antibody 1:20,000 respectively. Image was developed using FeQ™ ECL Substrate Kit .