



SunLong Biotech Co.,LTD
Tel: 0086-571- 56623320 Fax:0086-571- 56623318
E-mail:sales@sunlongbiotech.com
www.sunlongbiotech.com

[KD-Validated] Anti-Flotillin 1 Rabbit Monoclonal Antibody

Cat No.: KD-10381

Aliases:

Flotillin 1; Flotillin-1; Integral Membrane Component Of Caveolae

Background:

UniProt Entry: [O75955](#);NCBI Gene Entry: [10211](#)

Application Information

Molecular Weight: Predicted, 47 kDa, observed, 48 kDa Clonality: Rabbit monoclonal antibody Clone ID: 23GB845 Species Reactivity: Human Applications Used: Western Blotting (WB), Flow Cytometry (FCM), Immunocytochemistry (IC)

Immunogen

A synthesized peptide derived from human Flotillin 1

Isotype

Rabbit IgG

Storage Buffer

Supplied in PBS (pH 7.4) containing 50% glycerol, and 0.02% sodium azide.

Storage

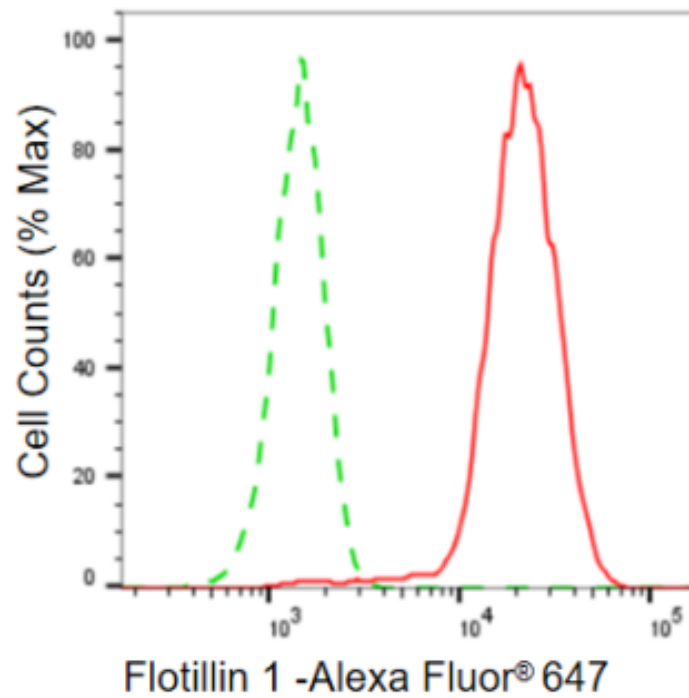
Store at -20 °C for one year.

Recommended Dilutions

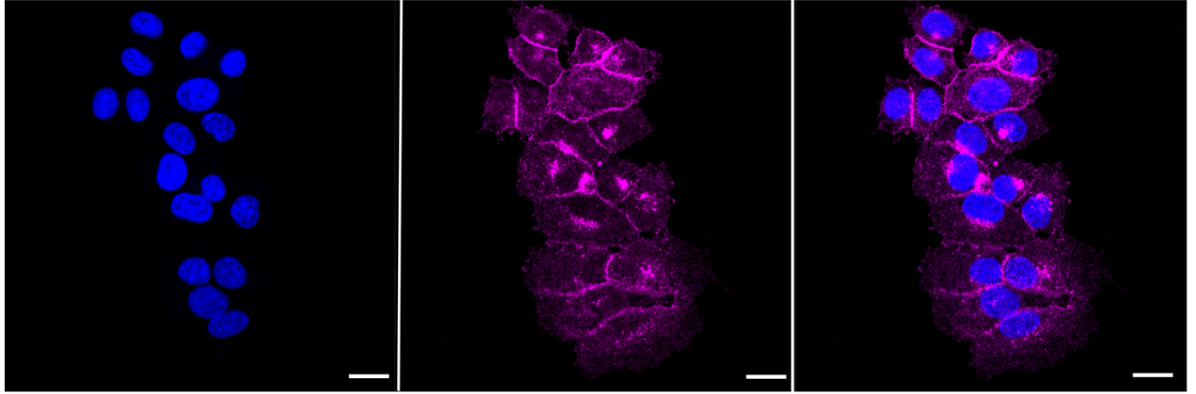
Western Blotting (WB): 1:2,000-1:10,000 Flow Cytometry (FCM): 1:2,000
Immunocytochemistry (IC): 1:1,000

Protocols

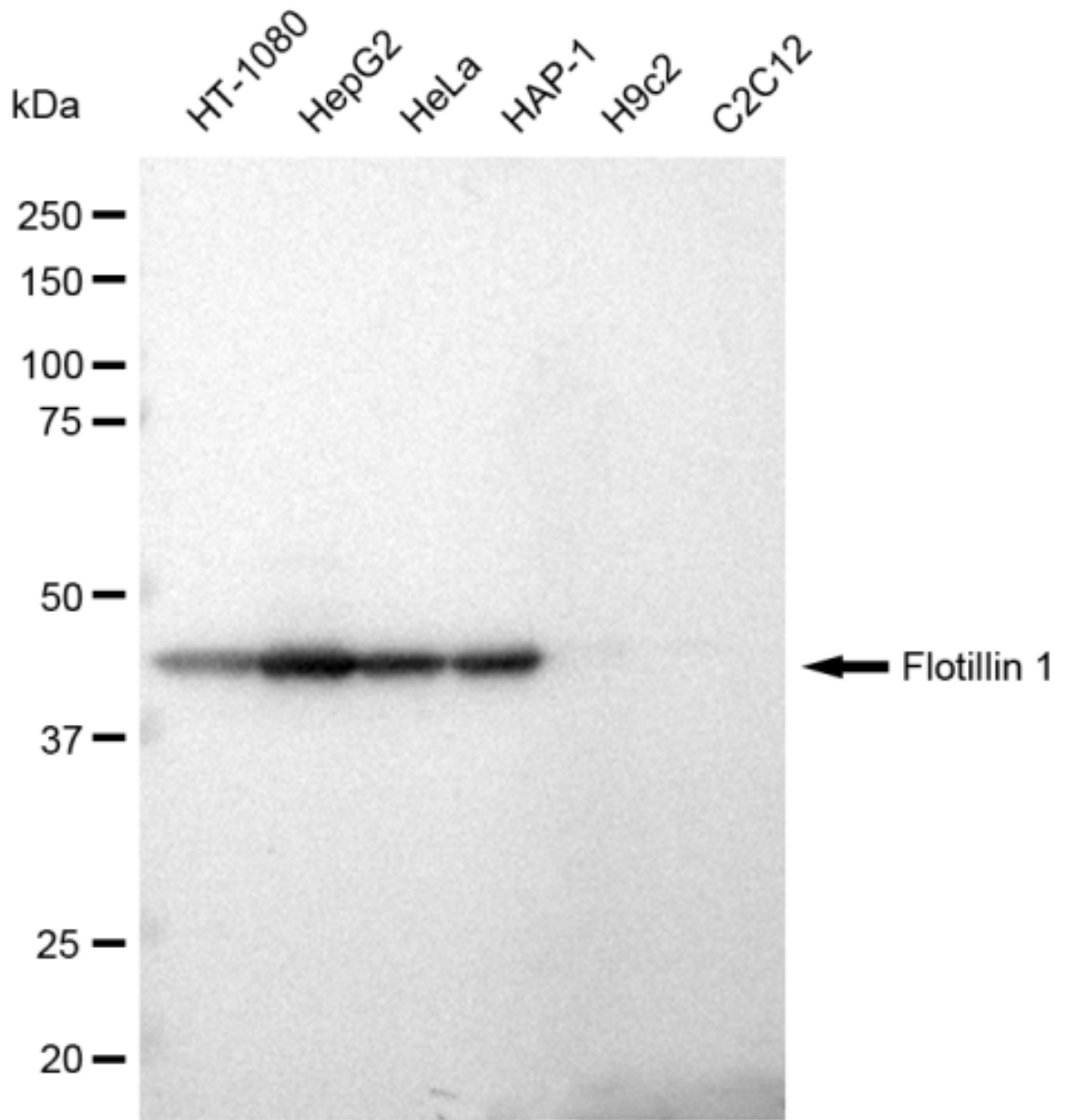
For general and specific antibody protocols please visit our website. Read all instructions before using this product.



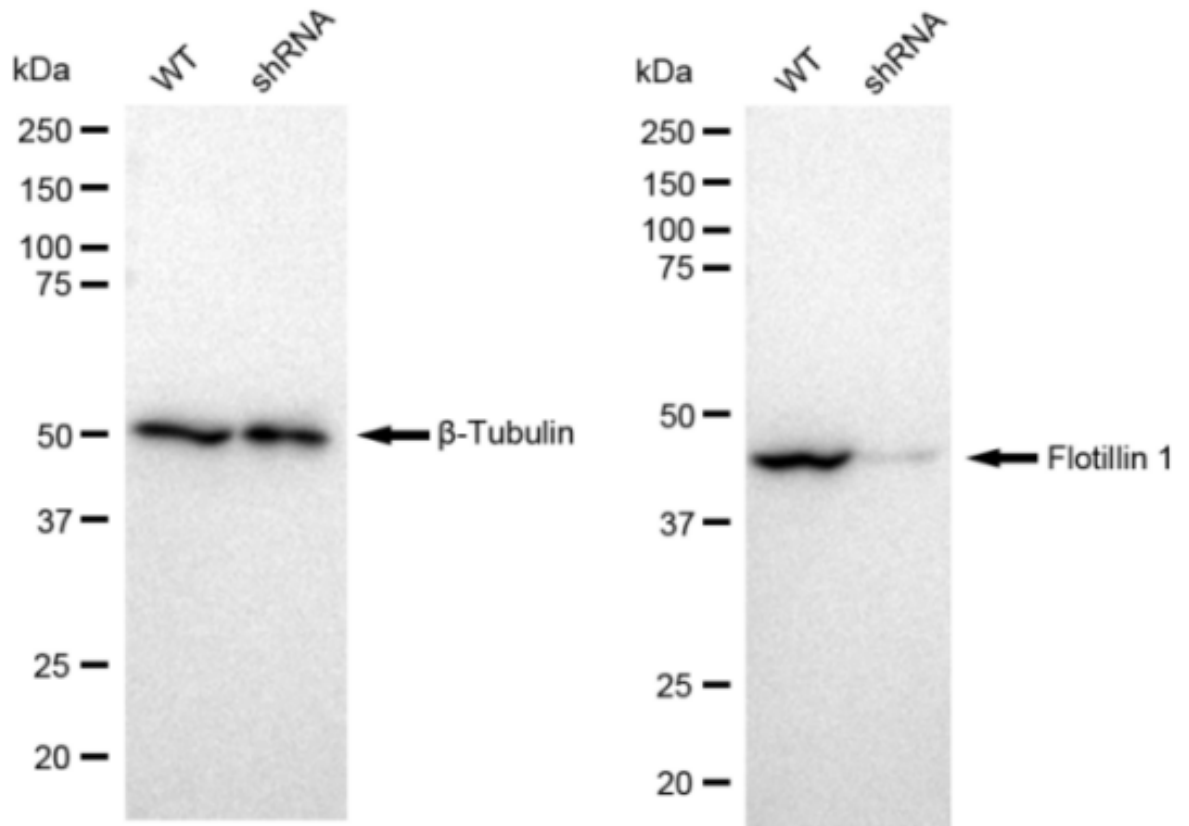
Flow cytometric analysis of Flotillin 1 expression in HepG2 cells using anti-Flotillin 1 antibody . Green, isotype control; red, Flotillin 1.



Immunocytochemical staining of HepG2 cells with Flotillin 1 antibody . Nuclei were stained blue with DAPI; Flotillin 1 was stained magenta with Alexa Fluor® 647. Scale bar, 20 μm .



Western blotting analysis using anti-Flotillin 1 antibody . Total cell lysates (30 μ g) from various cell lines were loaded and separated by SDS-PAGE. The blot was incubated with anti-Flotillin 1 antibody and HRP-conjugated goat anti rabbit secondary antibody respectively. Image was developed using FeQTM ECL Substrate Kit .



Western blotting analysis using anti-Flotillin 1 antibody . Flotillin 1 expression in wild type (WT) and Flotillin 1 shRNA knockdown (KD) HeLa cells with 30 μ g of total cell lysates. β -Tubulin serves as a loading control. The blot was incubated with anti-Flotillin 1 antibody and HRP-conjugated goat anti rabbit secondary antibody respectively. Image was developed using FeQTM ECL Substrate Kit .