



SunLong Biotech Co.,LTD
Tel: 0086-571- 56623320 Fax:0086-571- 56623318
E-mail:sales@sunlongbiotech.com
www.sunlongbiotech.com

[KD-Validated] Anti-Flap Structure-Specific Endonuclease 1 Rabbit Monoclonal Antibody

Cat No.: KD-10378

Aliases:

FEN1; Flap Structure-Specific Endonuclease 1; FEN-1; MF1; DNase IV; RAD2;
Maturation Factor-1; Flap Endonuclease 1; Maturation Factor 1; EC 3.1.-.-; HFEN-1

Background:

UniProt Entry: [P39748](#);NCBI Gene Entry: [2237](#)

Application Information

Molecular Weight: Predicted, 43 kDa, observed, 43 kDa Clonality: Rabbit monoclonal
antibody Clone ID: 24GB4835 Species Reactivity: Human, Mouse, Rat Applications
Tested: Western Blotting (WB), Flow Cytometry (FCM)

Immunogen

A synthesized peptide derived from human FEN1

Isotype

Rabbit IgG

Storage Buffer

Supplied in PBS (pH 7.4) containing 50% glycerol, and 0.02% sodium azide.

Storage

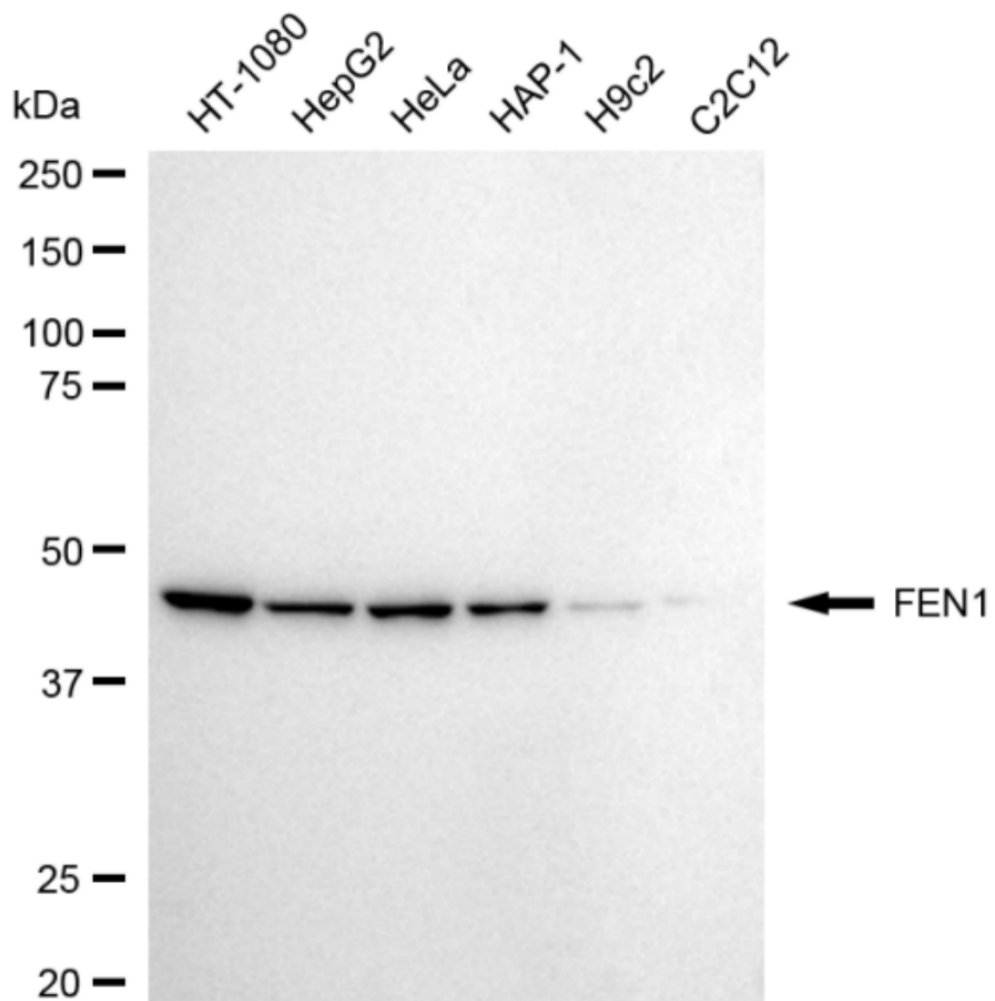
Store at -20 °C for one year.

Recommended Dilutions

Western Blotting (WB): 1:1,000-1:5,000 Flow Cytometry (FCM): 1:2,000

Protocols

For general and specific antibody protocols please visit our website. Read all instructions before using this product.



Western blotting analysis using anti-FEN1 antibody 1:5,000 and HRP-conjugated goat anti-rabbit secondary antibody 1:20,000 respectively. Image was developed using NaQ™ ECL Substrate Kit 1:5,000 and HRP-conjugated goat anti-rabbit secondary antibody

1:20,000 respectively. Image was developed using NaQ™ ECL Substrate Kit 1:2,000.
Green, isotype control; red, FEN1.