



SunLong Biotech Co.,LTD
Tel: 0086-571- 56623320 Fax:0086-571- 56623318
E-mail:sales@sunlongbiotech.com
www.sunlongbiotech.com

[KD-Validated] Anti-KMT6 / EZH2 Rabbit Rabbit Monoclonal Antibody

Cat No.: KD-10373

Aliases:

Enhancer Of Zeste 2 Polycomb Repressive Complex 2 Subunit; ENX-1; KMT6;
KMT6A; Histone-Lysine N-Methyltransferase EZH2; Lysine N-Methyltransferase 6;
Enhancer Of Zeste Homolog 2;EZH1; Enhancer Of Zeste (Drosophila) Homolog 2;
Enhancer Of Zeste Homolog 2 (Drosophila); EC 2.1.1.356; EC 2.1.1.43; EC 2.1.1;
EZH2b; ENX1; WVS2; WVS

Background:

UniProt Entry: [Q15910](#);NCBI Gene Entry: [2146](#)

Application Information

Molecular Weight: Predicted, 85 kDa, observed, 98 kDa Clonality: Rabbit monoclonal
antibody Clone ID: 23GB835 Species Reactivity: Human, Mouse, Rat Applications
Tested: Western Blotting (WB), Flow Cytometry (FCM)

Immunogen

A synthesized peptide derived from human KMT6 / EZH2

Isotype

Rabbit IgG

Storage Buffer

Supplied in PBS (pH 7.4) containing 50% glycerol, and 0.02% sodium azide.

Storage

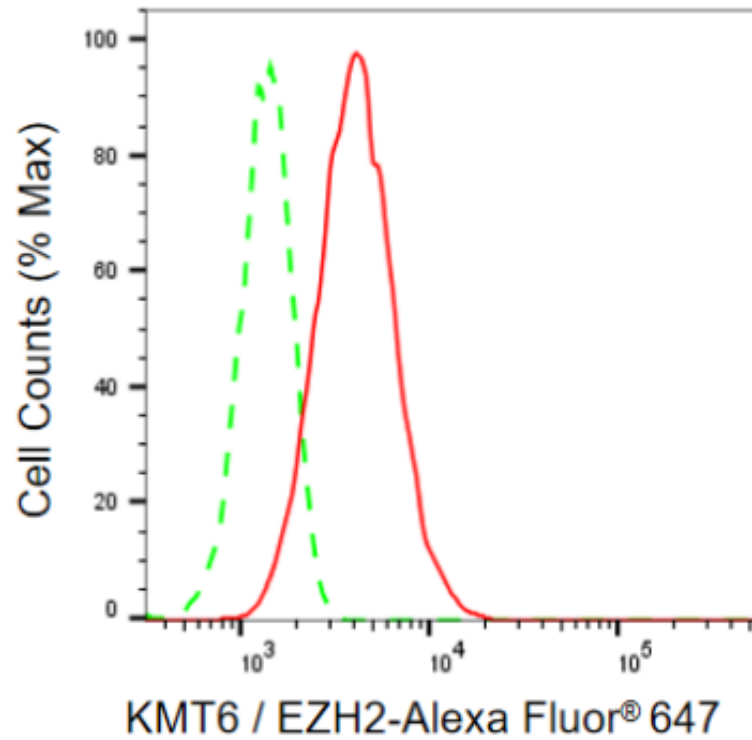
Store at -20 °C for one year.

Recommended Dilutions

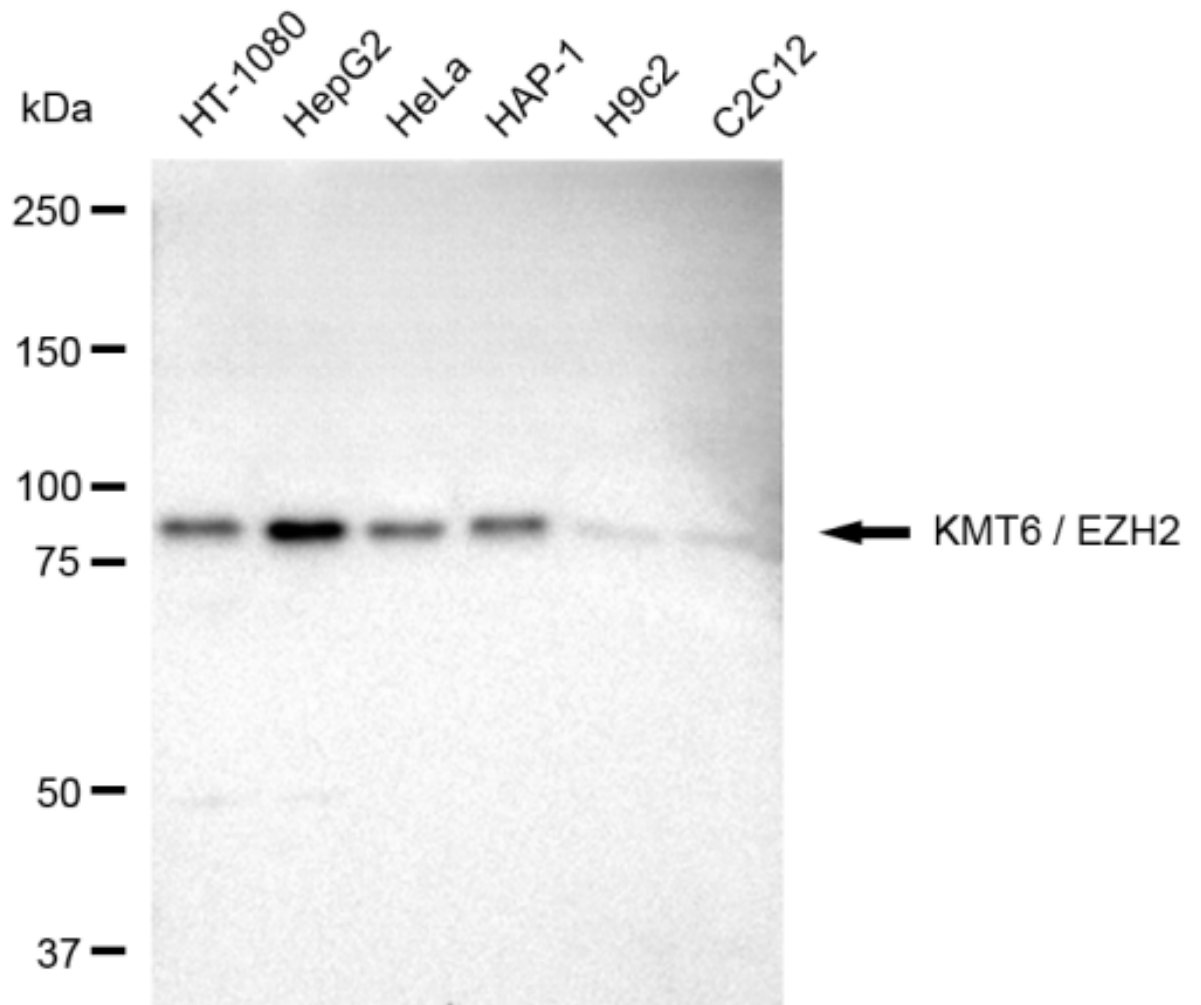
Western Blotting (WB): 1:2,000-1:10,000 Flow Cytometry (FCM): 1:2,000

Protocols

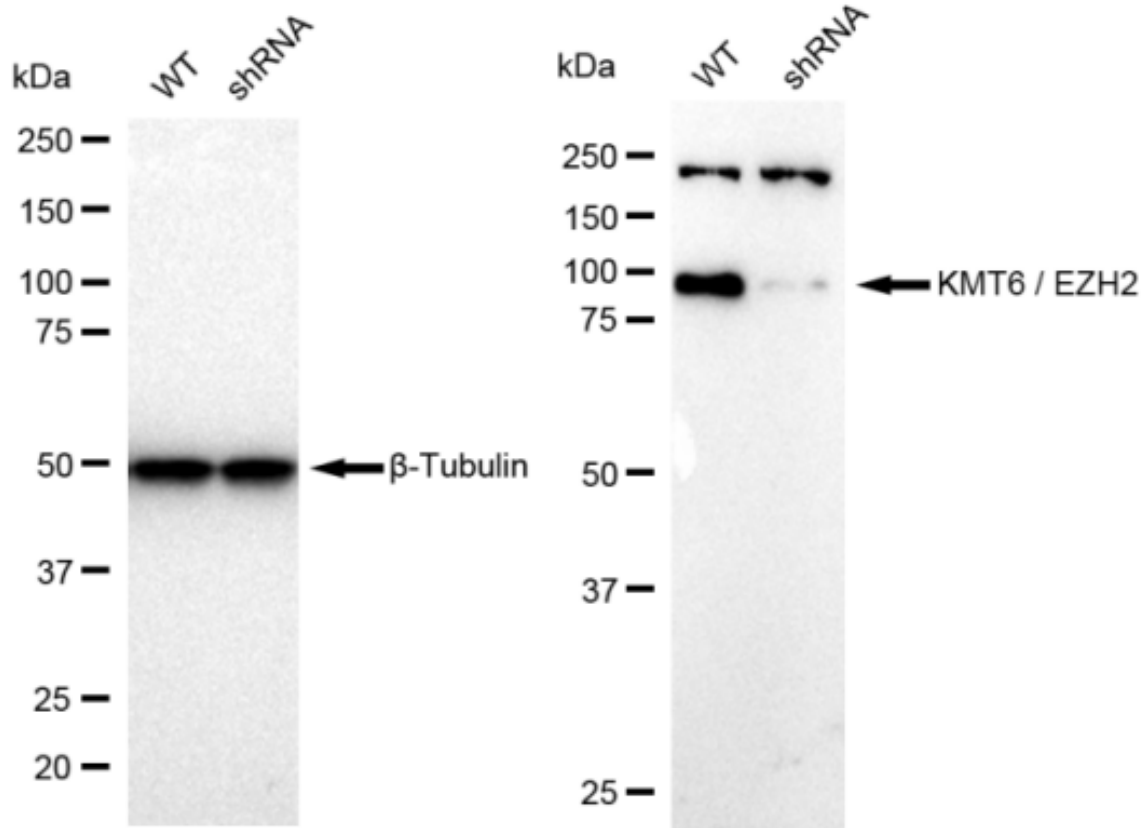
For general and specific antibody protocols please visit our website. Read all instructions before using this product.



Flow cytometric analysis of KMT6 / EZH2 expression in HepG2 cells using KMT6 / EZH2 antibody 1:2,000. Green, isotype control; red, KMT6 / EZH2.



Western blotting analysis using anti-KMT6 / EZH2 antibody 1:10,000 and HRP-conjugated goat anti-rabbit secondary antibody 1:50,000 respectively. Image was developed using FeQ™ ECL Substrate Kit .



Western blotting analysis using anti-KMT6 / EZH2 antibody 1:10,000 and HRP-conjugated goat anti-rabbit secondary antibody 1:20,000 respectively. Image was developed using FeQ™ ECL Substrate Kit .