



SunLong Biotech Co.,LTD
Tel: 0086-571- 56623320 Fax:0086-571- 56623318
E-mail:sales@sunlongbiotech.com
www.sunlongbiotech.com

[KD-Validated] Anti-Exo/Endonuclease G Rabbit Monoclonal Antibody

Cat No.: KD-10372

Aliases:

Exo/Endonuclease G; ENGL; Endonuclease G-Like 1; ENDOGL1; ENDOGL2; ENGL-A; ENGL-B; Endo/Exonuclease (5'-3'), Endonuclease G-Like; Nuclease EXOG, Mitochondrial; Endonuclease G-Like 2; Endo G-Like 1; EC 3.1.30.-; EC 3.1.30; ENGLA; ENGLB

Background:

UniProt Entry: [Q9Y2C4](#);NCBI Gene Entry: [9941](#)

Application Information

Molecular Weight: Predicted, 41 kDa, observed, 41 kDa Clonality: Rabbit monoclonal antibody Clone ID: 23GB1370 Species Reactivity: Human Applications Used: Western Blotting (WB), Immunocytochemistry (IC)

Immunogen

A synthesized peptide derived from human ENDOGL1 / ENGL

Isotype

Rabbit IgG

Storage Buffer

Supplied in PBS (pH 7.4) containing 50% glycerol, and 0.02% sodium azide.

Storage

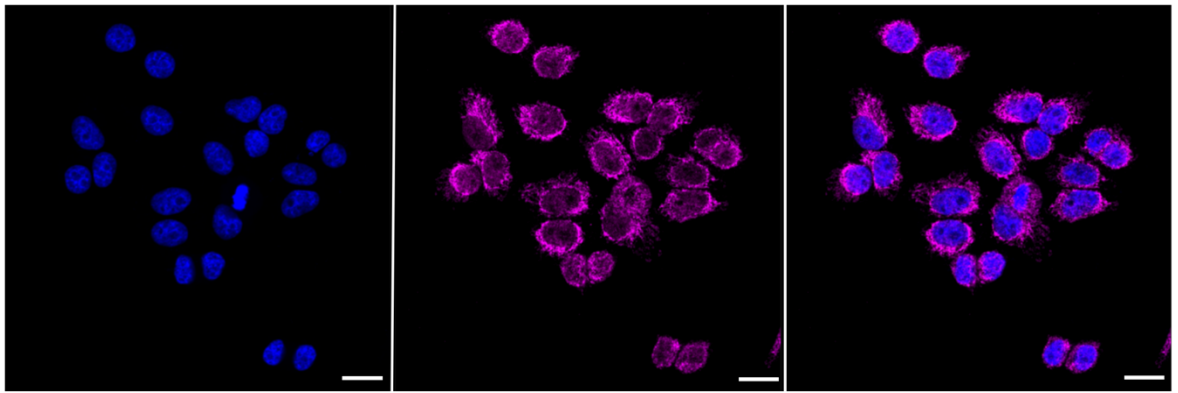
Store at -20 °C for one year.

Recommended Dilutions

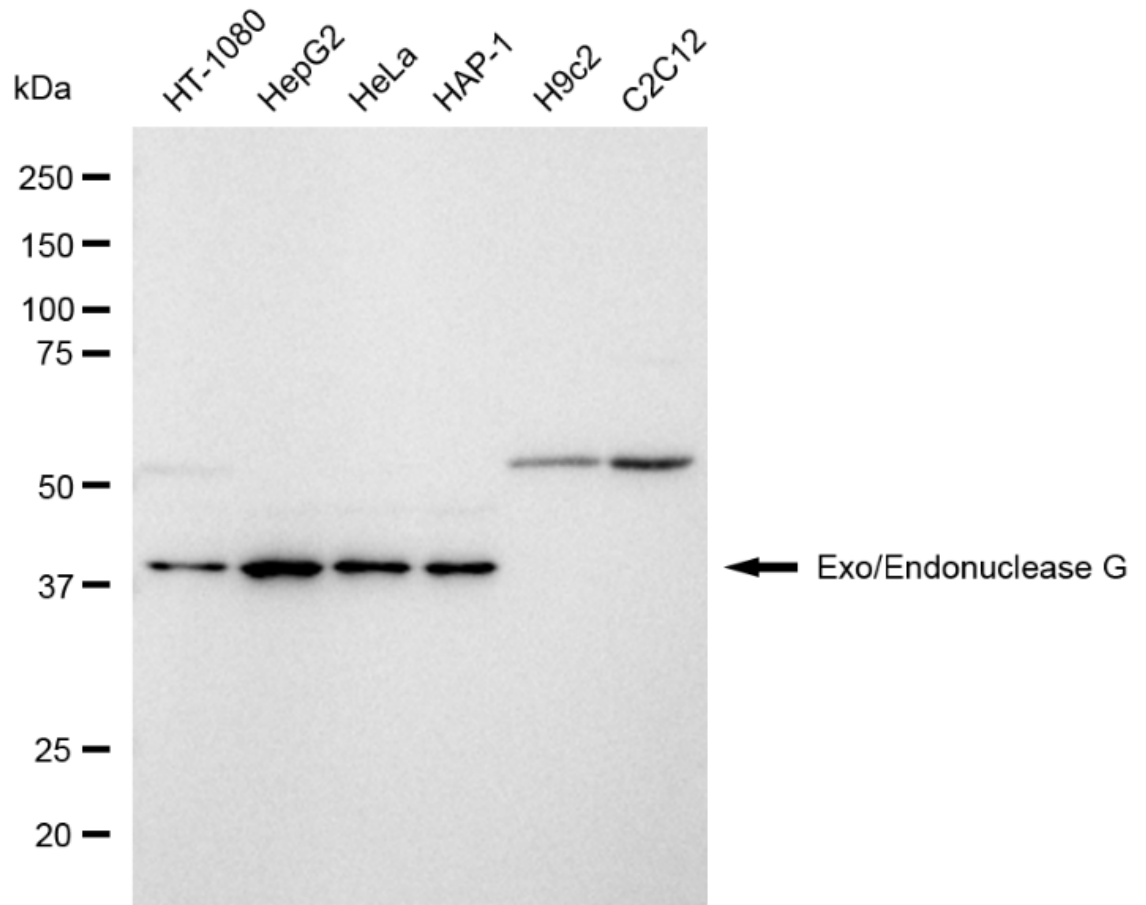
Western Blotting (WB): 1:1,000-1:5,000 Immunocytochemistry (IC): 1:1,000

Protocols

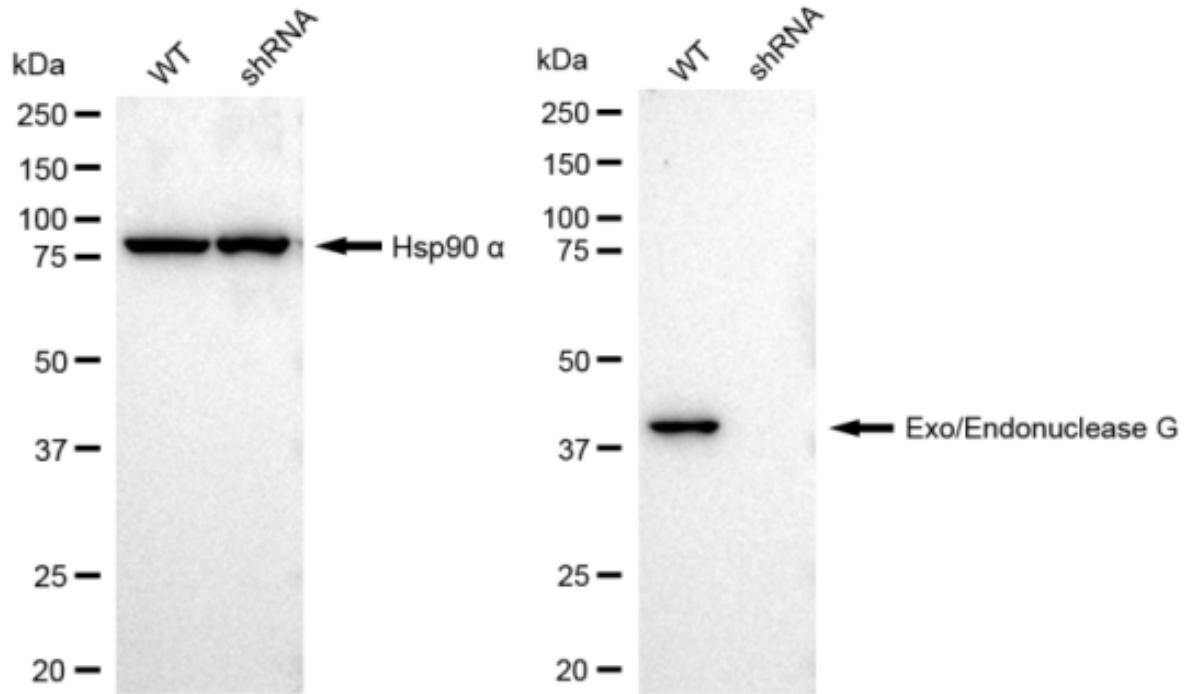
For general and specific antibody protocols please visit our website. Read all instructions before using this product.



Immunocytochemical staining of HepG2 cells with Exo/Endonuclease G antibody 1:1,000. Nuclei were stained blue with DAPI; Exo/Endonuclease G was stained magenta with Alexa Fluor® 647. Images were taken using Leica stellaris 5. Protein abundance based on laser Intensity and smart gain: High. Scale bar: 20 μ m.



Western blotting analysis using anti-Exo/Endonuclease G antibody 1:5,000 and HRP-conjugated goat anti-rabbit secondary antibody 1:20,000 respectively. Image was developed using FeQ™ ECL Substrate Kit .



Western blotting analysis using anti-Exo/endonuclease G antibody 1:5,000 and HRP-conjugated goat anti-rabbit secondary antibody 1:20,000 respectively. Image was developed using FeQ™ ECL Substrate Kit .