



SunLong Biotech Co.,LTD  
Tel: 0086-571- 56623320 Fax:0086-571- 56623318  
E-mail:sales@sunlongbiotech.com  
www.sunlongbiotech.com

## **[KD-Validated] Anti-ERCC1 Rabbit Monoclonal Antibody**

Cat No.: KD-10371

### **Aliases:**

ERCC Excision Repair 1, Endonuclease Non-Catalytic Subunit; RAD10; Excision Repair Cross-Complementing Rodent Repair Deficiency, Complementation Group 1 (Includes Overlapping Antisense Sequence); Excision Repair Cross-Complementation Group 1; DNA Excision Repair Protein ERCC-1; COFS4; UV20

### **Background:**

UniProt Entry: [P07992](#);NCBI Gene Entry: [2067](#)

### **Application Information**

Molecular Weight: Predicted, 33 kDa, observed, 36 kDa Clonality: Rabbit monoclonal antibody Clone ID: 23GB1230 Species Reaceivity: Human, Mouse Applicseions Tsted: Western Blotting (WB), Immunocytochemistry (IC)

### **Immunogen**

A synthesized peptide derived from human ERCC1

### **Isotype**

Rabbit IgG

### **Storage Buffer**

Supplied in PBS (pH 7.4) containing 50% glycerol, and 0.02% sodium azide.

### Storage

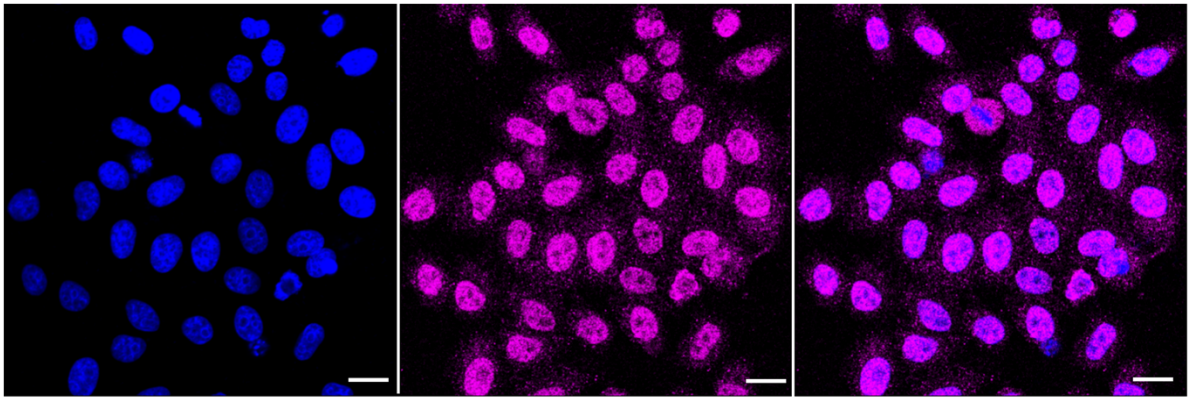
Store at -20 °C for one year.

### Recommended Dilutions

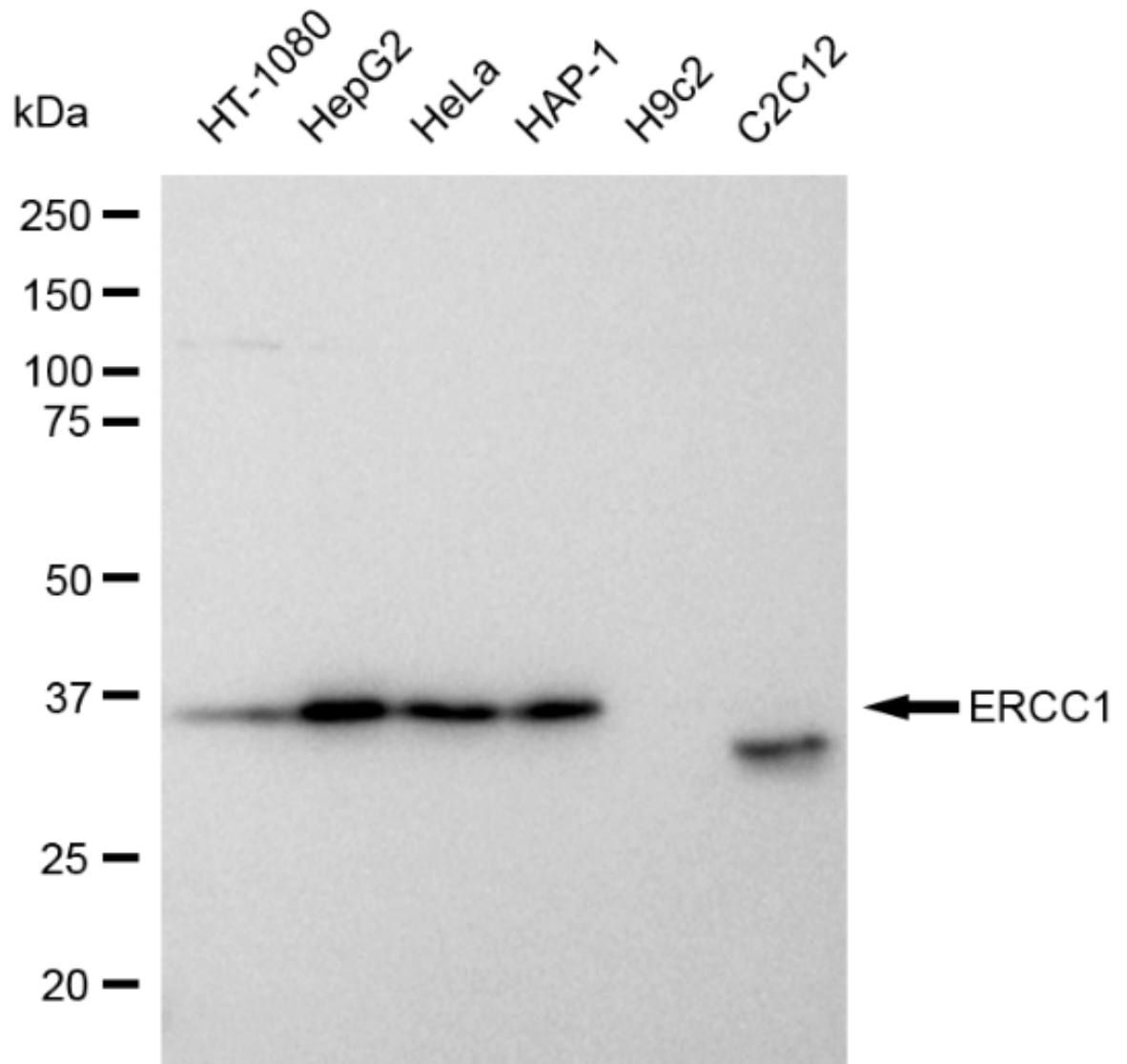
Western Blotting (WB): 1:1,000-1:5,000 Immunocytochemistry (IC): 1:1,000

### Protocols

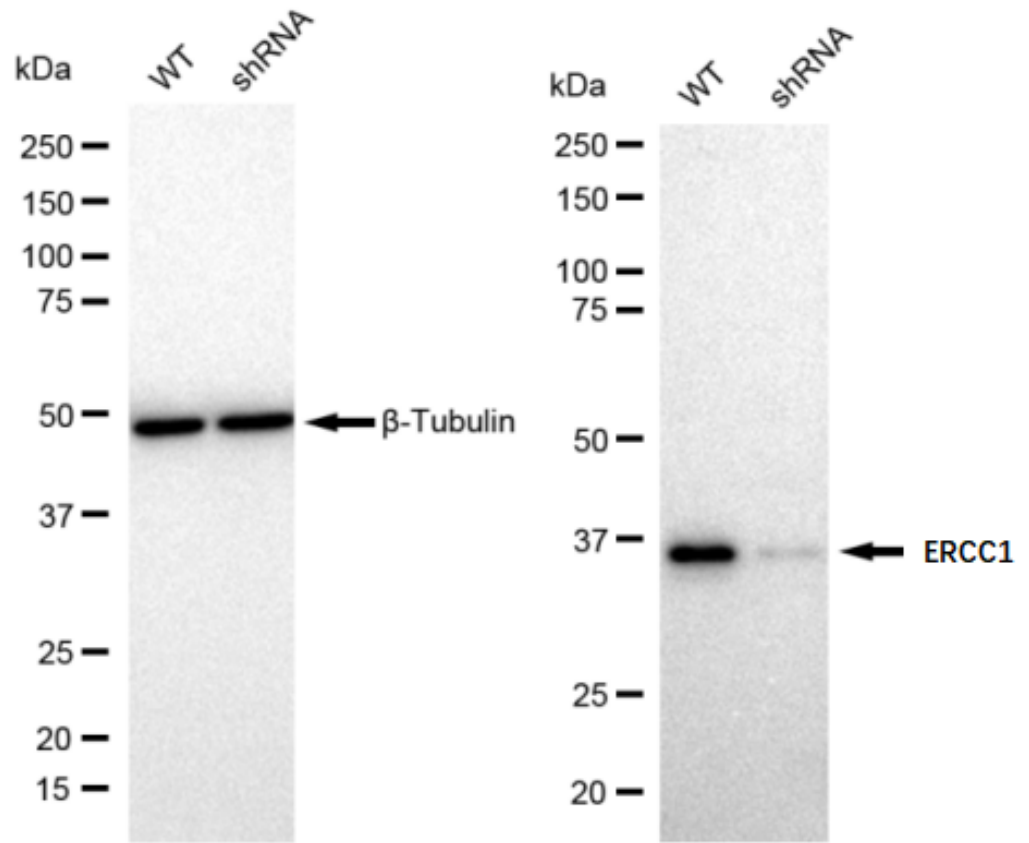
For general and specific antibody protocols please visit our website. Read all instructions before using this product.



Immunocytochemical staining of HepG2 cells with ERCC1 antibody 1:1,000. Nuclei were stained blue with DAPI; ERCC1 was stained magenta with Alexa Fluor® 647. Images were taken using Leica stellaris 5. Protein abundance based on laser Intensity and smart gain: Medium. Scale bar: 20  $\mu$ m.



Western blotting analysis using anti-ERCC1 antibody 1:5,000 and HRP-conjugated goat anti-rabbit secondary antibody 1:20,000 respectively. Image was developed using FeQ™ ECL Substrate Kit .



Western blotting analysis using anti-ERCC1 antibody 1:5,000 and HRP-conjugated goat anti-rabbit secondary antibody 1:20,000 respectively. Image was developed using FeQ™ ECL Substrate Kit .