



SunLong Biotech Co.,LTD  
Tel: 0086-571- 56623320 Fax:0086-571- 56623318  
E-mail:sales@sunlongbiotech.com  
www.sunlongbiotech.com

## [KD-Validated] Anti-ERBB2 Mouse Monoclonal Antibody

Cat No.: KD-10370

### Aliases:

ERBB2; Erb-B2 Receptor Tyrosine Kinase 2; HER2; NEU 2; C-ERB-2; C-ERB2; MLN-19; HER-2; CD340; NGL; V-Erb-B2 Avian Erythroblastic Leukemia Viral Oncogene Homolog 2; Tyrosine Kinase-Type Cell Surface Receptor HER2; Neuro/Glioblastoma Derived Oncogene Homolog; Human Epidermal Growth Factor Receptor 2; Receptor Tyrosine-Protein Kinase ErbB-2; Metastatic Lymph Node Gene 19 Protein; Proto-Oncogene C-ErbB-2; Proto-Oncogene Neu; P185(ErbB2); EC 2.7.10.1; MLN 19; V-Erb-B2 Avian Erythroblastic Leukemia Viral Oncogene Homolog 2 (Neuro/Glioblastoma Derived Oncogene Homolog) 2; V-Erb-B2 Erythroblastic Leukemia Viral Oncogene Homolog 2, Neuro/Glioblastoma Derived Oncogene Homolog; V-Erb-B2 Avian Erythroblastic Leukemia Viral Oncoprotein 2; Neuroblastoma/Glioblastoma Derived Oncogene Homolog; Metastatic Lymph Node Gene 19; C-Erb B2/Neu Protein; CD340 Antigen; P185(ERBB2); HER-2/Neu; Herstatin; P185erbB2; EC 2.7.10; VSCN2; MLN19; TKR1

### Background:

UniProt Entry: [P04626](#);NCBI Gene Entry: [2064](#)

### Application Information

Molecular Weight: Predicted, 138 kDa, observed, 180 kDa Conaley: Mouse monoclonal antibody Conne ID: 24GB5710 Species Reactivity: Human, Mouse, Rat Applications Tested: Western Blotting (WB)

### Immunogen

Recombinant protein of human ERBB2

**Isotype**

Mouse IgG2a

**Storage Buffer**

Supplied in PBS (pH 7.4) containing 50% glycerol, and 0.02% sodium azide.

**Storage**

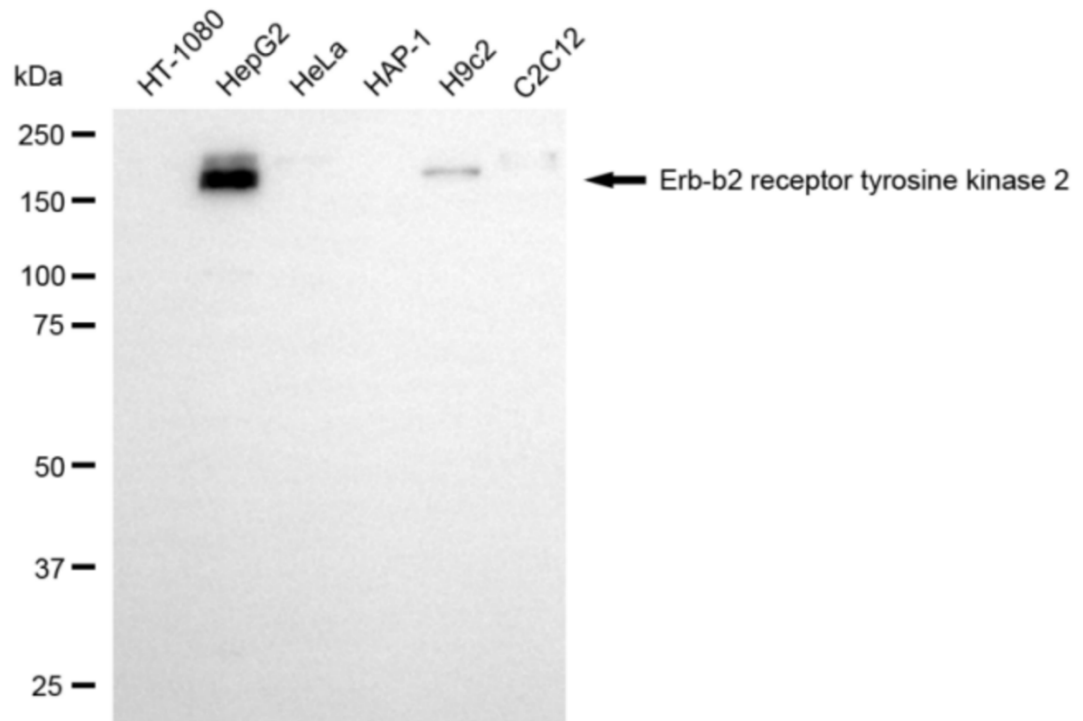
Store at -20 °C for one year.

**Recommended Dilutions**

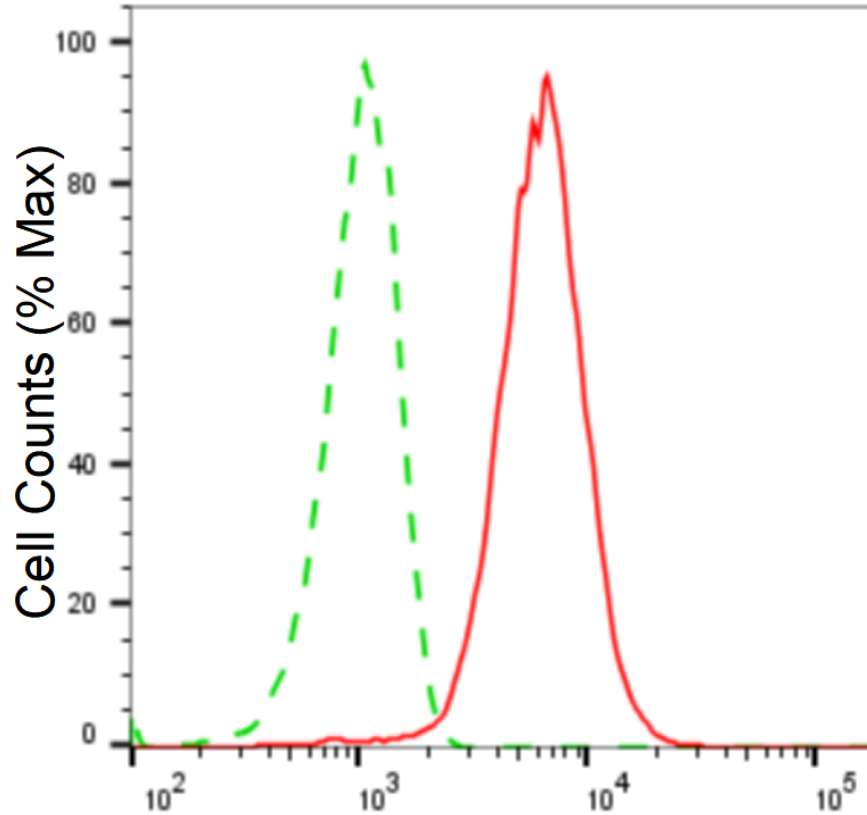
Western Blotting (WB):1:500-1:2,500

**Protocols**

For general and specific antibody protocols please visit our website. Read all instructions before using this product.



Western blotting analysis using anti-erb-b2 receptor tyrosine kinase 2 antibody 1:2,500 and HRP-conjugated goat anti-mouse secondary antibody 1:20,000 respectively. Image was developed using NaQ™ ECL Substrate Kit 1:2,500 and HRP-conjugated goat anti-mouse secondary antibody 1:20,000 respectively. Image was developed using FeQ™ ECL Substrate Kit .



### Erb-b2 receptor tyrosine kinase 2-Alexa Fluor® 647

Flow cytometric analysis of erb-b2 receptor tyrosine kinase 2 expression in HepG2 cells using anti-erb-b2 receptor tyrosine kinase 2 antibody 1:2,000. Green, isotype control; red, erb-b2 receptor tyrosine kinase 2.