



SunLong Biotech Co.,LTD
Tel: 0086-571- 56623320 Fax:0086-571- 56623318
E-mail:sales@sunlongbiotech.com
www.sunlongbiotech.com

[KD-Validated] Anti-Erb-b2 receptor tyrosine kinase 2 Rabbit Monoclonal Antibody

Cat No.: KD-10368

Aliases:

Erb-B2 Receptor Tyrosine Kinase 2; HER2; NEU; C-ERB-2; C-ERB2; MLN-19; HER-2; CD340; NGL; V-Erb-B2 Avian Erythroblastic Leukemia Viral Oncogene Homolog 2; Tyrosine Kinase-Type Cell Surface Receptor HER2; Neuro/Glioblastoma Derived Oncogene Homolog; Human Epidermal Growth Factor Receptor 2; Receptor Tyrosine-Protein Kinase ErbB-2; Metastatic Lymph Node Gene 19 Protein; Proto-Oncogene C-ErbB-2; Proto-Oncogene Neu; P185(ErbB2); EC 2.7.10.1; MLN 19; V-Erb-B2 Avian Erythroblastic Leukemia Viral Oncogene Homolog 2 (Neuro/Glioblastoma Derived Oncogene Homolog); V-Erb-B2 Erythroblastic Leukemia Viral Oncogene Homolog 2, Neuro/Glioblastoma Derived Oncogene Homolog 3V-Erb-B2 Avian Erythroblastic Leukemia Viral Oncoprotein; Neuroblastoma/Glioblastoma Derived Oncogene Homolog; Metastatic Lymph Node Gene 19; C-Erb B2/Neu Protein; CD340 Antigen; P185(ERBB2); HER-2/Neu; Herstatin; P185erbB2; EC 2.7.10; VSCN2; MLN19; TKR1

Background:

UniProt Entry: [P04626](#);NCBI Gene Entry: [2064](#)

Application Information

Molecular Weight: Predicted, 138 kDa, observed, 185 kDa Clonality: Rabbit monoclonal antibody Clone ID: 23GB1350 Species Reactivity: Human, Mouse, Rat Applications Tested: Western Blotting (WB), Immunocytochemistry (IC)

Immunogen

A synthesized peptide derived from human ErbB2 (HER2)

Isotype

Rabbit IgG

Storage Buffer

Supplied in PBS (pH 7.4) containing 50% glycerol, and 0.02% sodium azide.

Storage

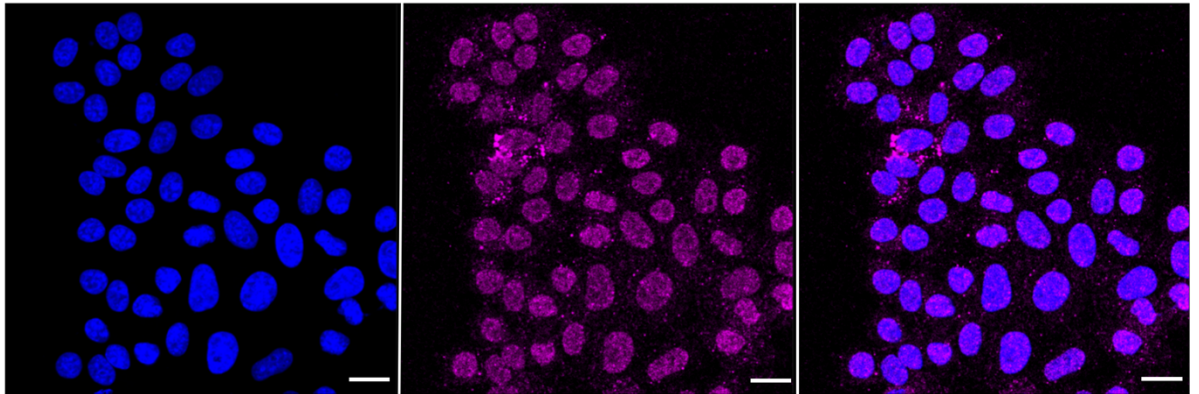
Store at -20 °C for one year.

Recommended Dilutions

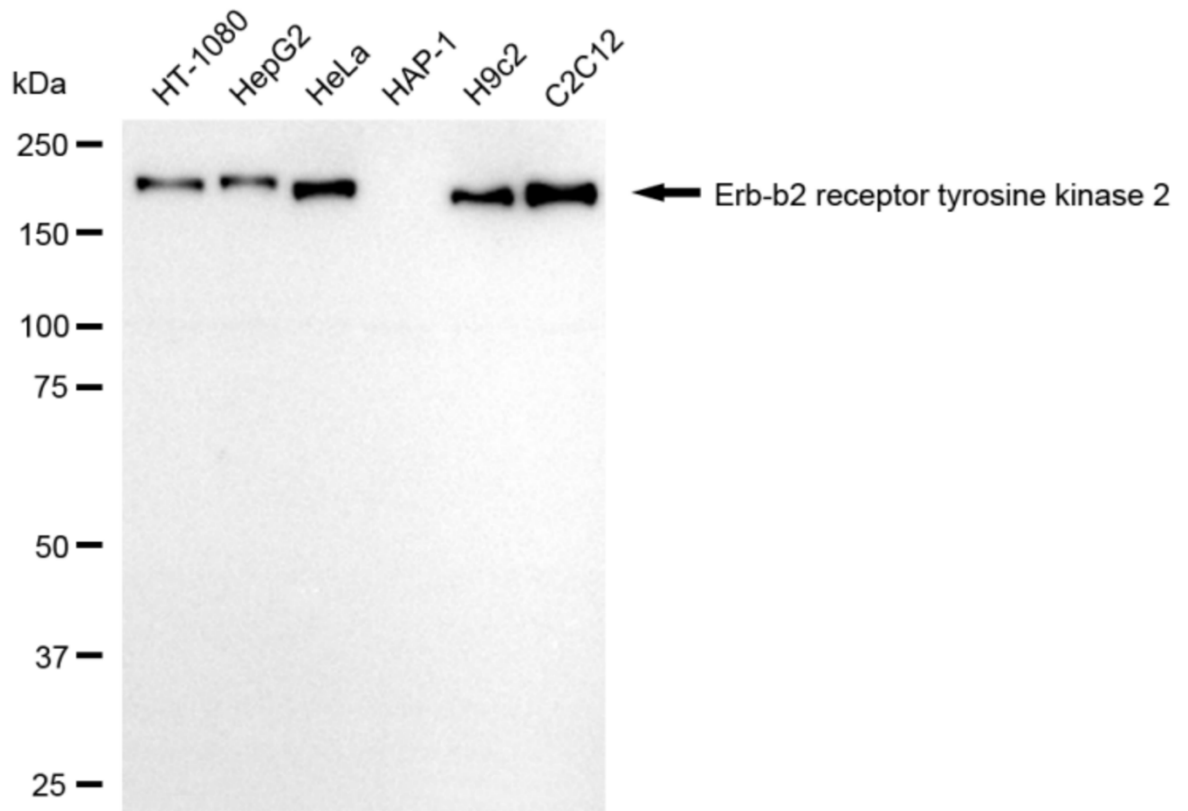
Western Blotting (WB): 1:1,000-1:5,000 Immunocytochemistry (IC): 1:1,000

Protocols

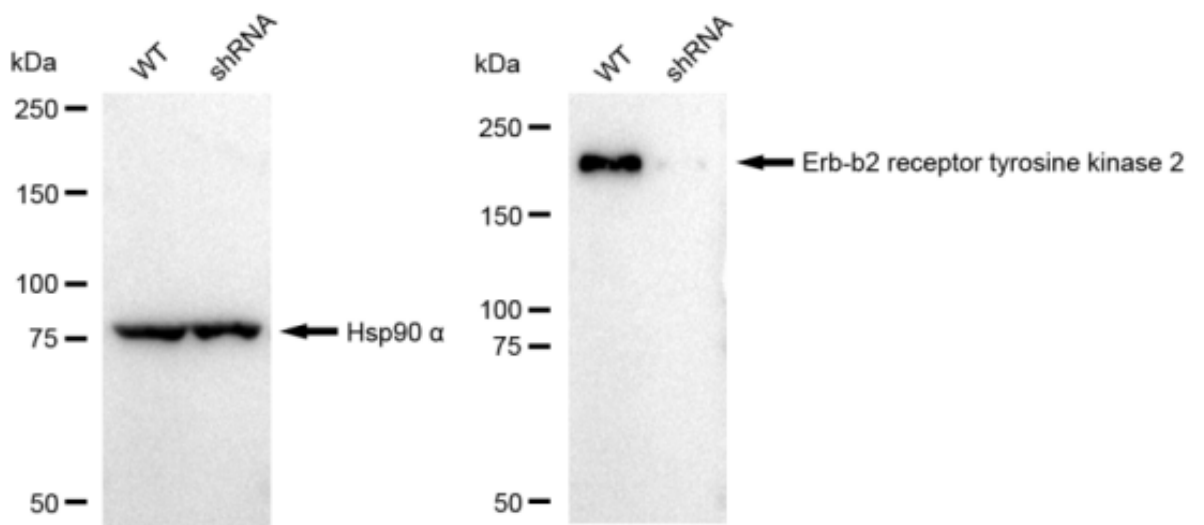
For general and specific antibody protocols please visit our website. Read all instructions before using this product.



Immunocytochemical staining of HepG2 cells with Erb-b2 receptor tyrosine kinase 2 antibody 1:1,000. Nuclei were stained blue with DAPI; Erb-b2 receptor tyrosine kinase 2 was stained magenta with Alexa Fluor® 647. Images were taken using Leica stellaris 5. Protein abundance based on laser Intensity and smart gain: Very low. Scale bar: 20 µm.



Western blotting analysis using anti-Erb-b2 receptor tyrosine kinase 2 antibody 1:5,000 and HRP-conjugated goat anti-rabbit secondary antibody 1:20,000 respectively. Image was developed using FeQ™ ECL Substrate Kit .



Western blotting analysis using anti-Erb-b2 receptor tyrosine kinase 2 antibody 1:5,000 and HRP-conjugated goat anti-rabbit secondary antibody 1:20,000 respectively. Image was developed using FeQ™ ECL Substrate Kit .