



SunLong Biotech Co.,LTD
Tel: 0086-571- 56623320 Fax:0086-571- 56623318
E-mail:sales@sunlongbiotech.com
www.sunlongbiotech.com

[KD-Validated] Anti-Ephrin Receptor B4 Rabbit Monoclonal Antibody

Cat No.: KD-10367

Aliases:

EPH Receptor B4; Ephrin Receptor EphB4; HTK; Ephrin Type-B Receptor; MYK1; Soluble EPHB4 Variant 1; Hepatoma Transmembrane Kinase; Soluble EPHB4 Variant 2; Tyrosine-Protein Kinase TYRO11; Soluble EPHB4 Variant 3; TYRO11; Tyrosine-Protein Kinase Receptor HTK; EC 2.7.10.1; EC 2.7.10; EphB4

Background:

UniProt Entry: [P54760](#);NCBI Gene Entry: [2050](#)

Application Information

Molecular Weight: Predicted, 108 kDa, observed, 135 kDa Clonality: Rabbit monoclonal antibody Clone ID: 23GB1045 Species Reactivity: Human, Mouse, Rat Applications Tested: Western Blotting (WB), Immunocytochemistry (IC)

Immunogen

A synthesized peptide derived from human Eph receptor B4/HTK

Isotype

Rabbit IgG

Storage Buffer

Supplied in PBS (pH 7.4) containing 50% glycerol, and 0.02% sodium azide.

Storage

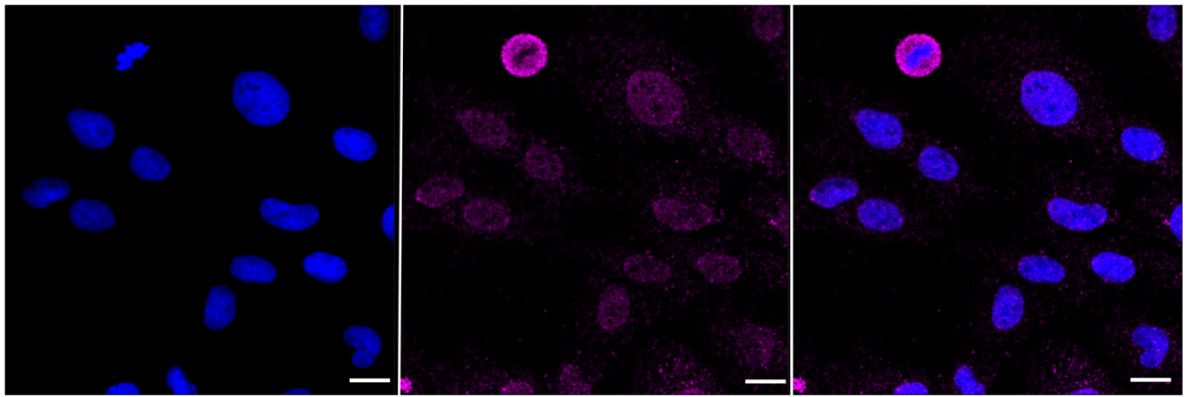
Store at -20 °C for one year.

Recommended Dilutions

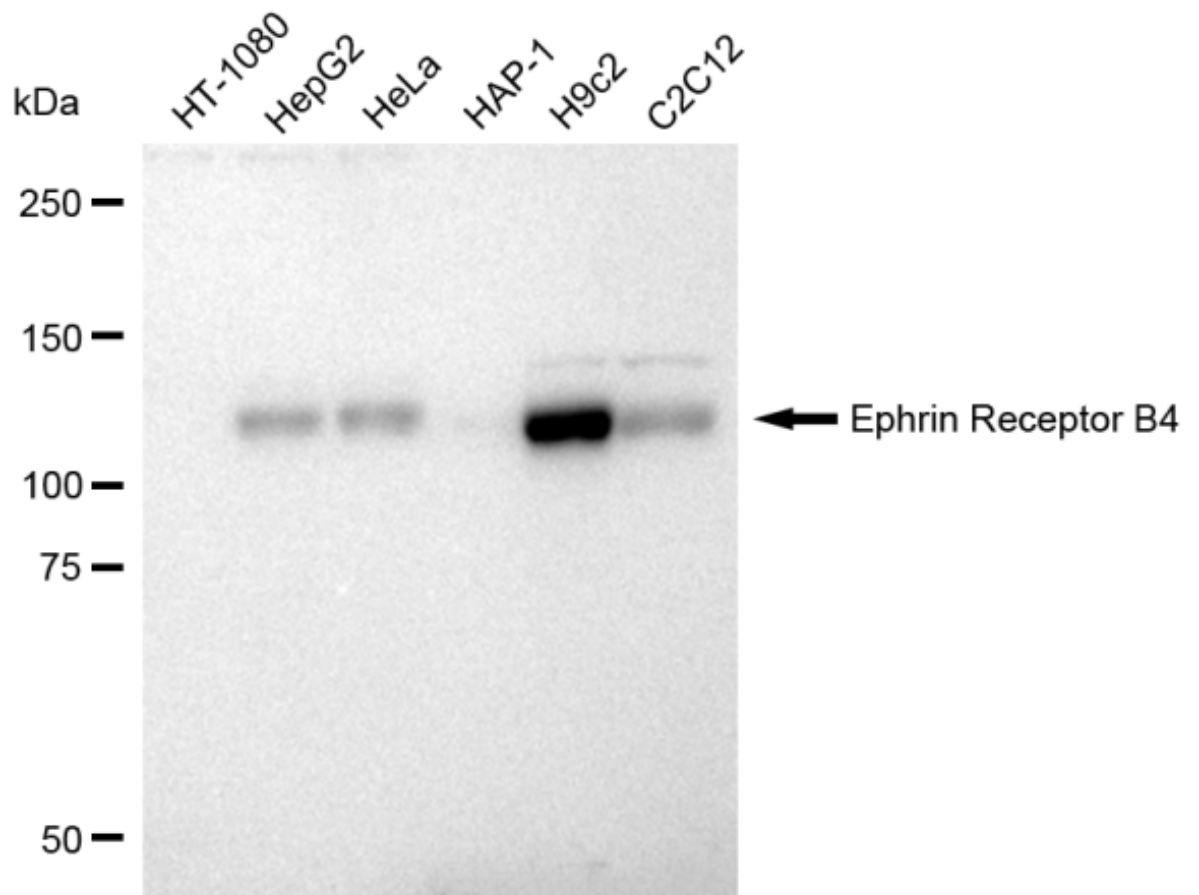
Western Blotting (WB): 1:1,000-1:5,000 Immunocytochemistry (IC): 1:1,000

Protocols

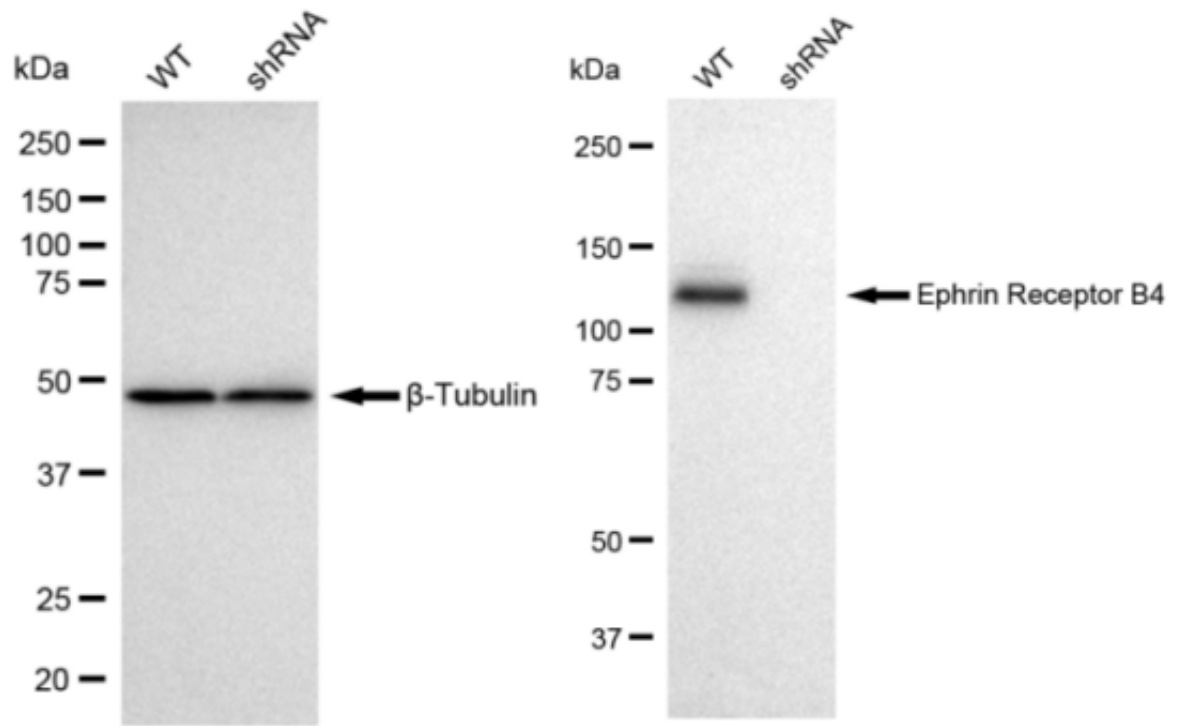
For general and specific antibody protocols please visit our website. Read all instructions before using this product.



Immunocytochemical staining of HepG2 cells with Ephrin Receptor B4 antibody 1:1,000. Nuclei were stained blue with DAPI; Ephrin Receptor B4 was stained magenta with Alexa Fluor® 647. Images were taken using Leica stellaris 5. Protein abundance based on laser Intensity and smart gain: Low. Scale bar: 20 µm.



Western blotting analysis using anti-Ephrin Receptor B4 antibody 1:5,000 and HRP-conjugated goat anti-rabbit secondary antibody 1:50,000 respectively. Image was developed using FeQ™ ECL Substrate Kit .



Western blotting analysis using anti-Ephrin Receptor B4 antibody 1:5,000 and HRP-conjugated goat anti-rabbit secondary antibody 1:20,000 respectively. Image was developed using FeQ™ ECL Substrate Kit .