



SunLong Biotech Co.,LTD  
Tel: 0086-571- 56623320 Fax:0086-571- 56623318  
E-mail:sales@sunlongbiotech.com  
www.sunlongbiotech.com

## [KD-Validated] Anti-Eph receptor B1 Rabbit Monoclonal Antibody

Cat No.: KD-10366

### Aliases:

EPHB1; EPH Receptor B1; EPHT2; HEK6; Neuronally-Expressed EPH-Related Tyrosine Kinase; Tyrosine-Protein Kinase Receptor EPH-2; Ephrin Type-B Receptor 1; EPH-Like Kinase 6; EC 2.7.10.1; Hek6; ELK; NET; EK6; Eph Tyrosine Kinase 2; EPH Tyrosine Kinase 2; EC 2.7.10; EphB1

### Background:

UniProt Entry: [P54762](#);NCBI Gene Entry: [2047](#)

### Application Information

Molecular Weight: Predicted, 110 kDa, observed, 120 kDa Clonality: Rabbit monoclonal antibody Clone ID: 23GB5335 Species Reaceivity: Human, Mouse Applicseions Tsted: Western Blotting (WB)

### Immunogen

A synthesized peptide derived from human Eph receptor B1

### Isotype

Rabbit IgG

### Storage Buffer

Supplied in PBS (pH 7.4) containing 50% glycerol, and 0.02% sodium azide.

### Storage

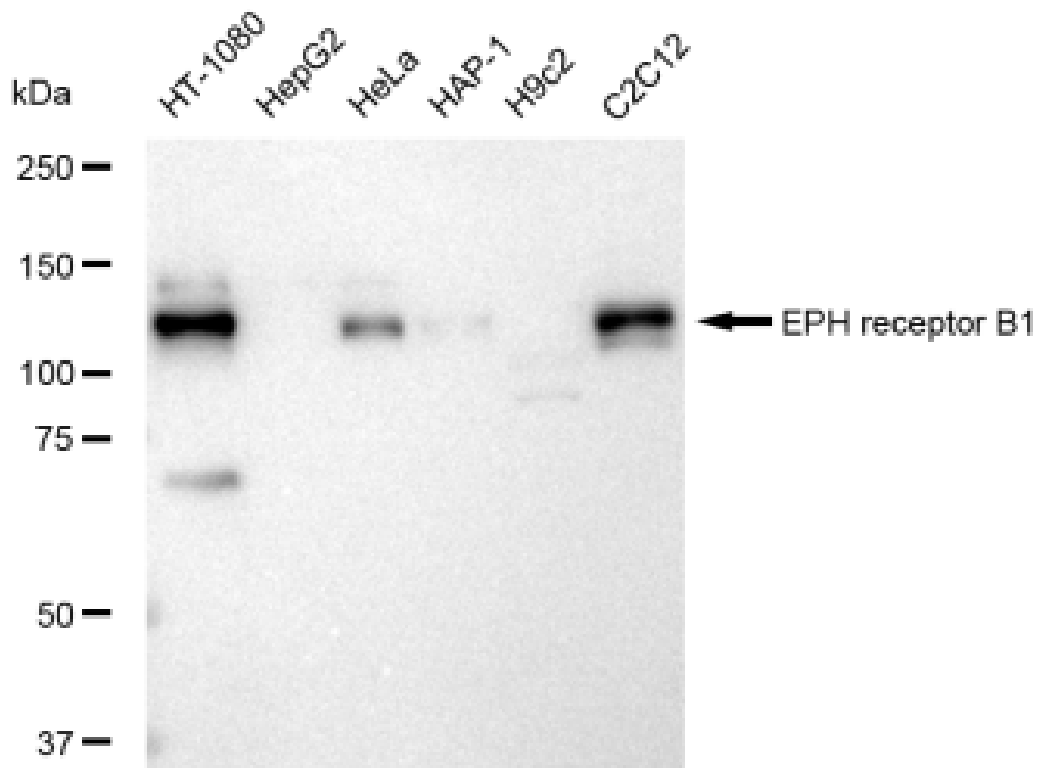
Store at -20 °C for one year.

### Recommended Dilutions

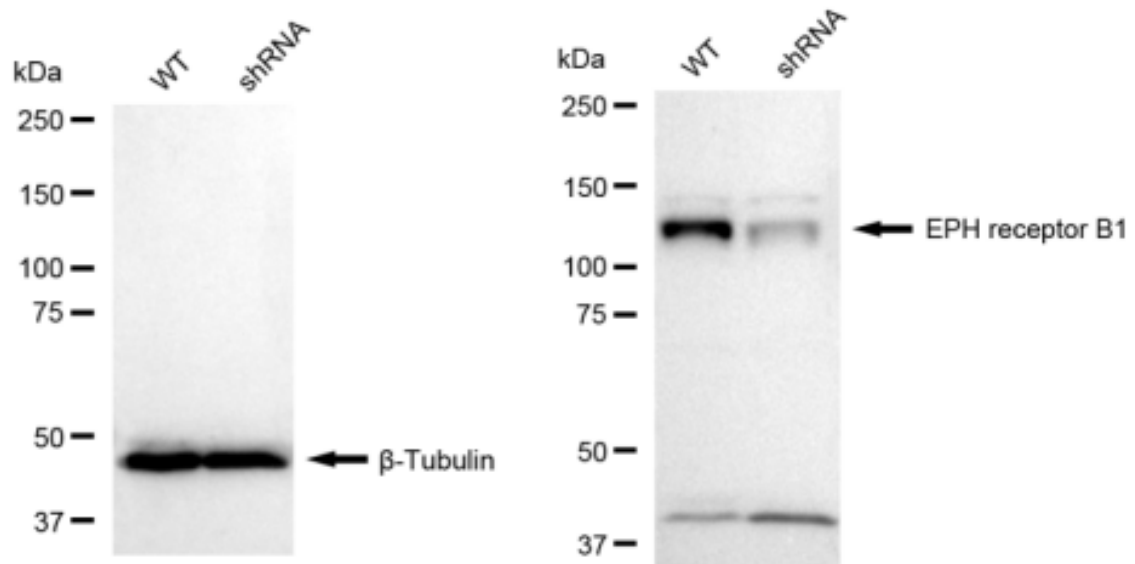
Western Blotting (WB): 1:1,000-1:5,000

### Protocols

For general and specific antibody protocols please visit our website. Read all instructions before using this product.



Western blotting analysis using anti-EPH receptor B1 antibody 1:5,000 and HRP-conjugated goat anti-rabbit secondary antibody 1:20,000 respectively. Image was developed using FeQ™ ECL Substrate Kit .



Western blotting analysis using anti-Eph receptor B1 antibody 1:5,000 and HRP-conjugated goat anti-rabbit secondary antibody 1:20,000 respectively. Image was developed using FeQ™ ECL Substrate Kit .