



SunLong Biotech Co.,LTD  
Tel: 0086-571- 56623320 Fax:0086-571- 56623318  
E-mail:sales@sunlongbiotech.com  
www.sunlongbiotech.com

## **[KD-Validated] Anti-Aminopeptidase A / CD249 Rabbit Monoclonal Antibody**

Cat No.: KD-10364

### **Aliases:**

ENPEP; Glutamyl Aminopeptidase; CD249; Differentiation Antigen Gp160; Aminopeptidase A; EC 3.4.11.7; Gp160; AP-A; EAP; Glutamyl Aminopeptidase (Aminopeptidase A); CD249 Antigen; EC 3.4.11; GP160; APA

### **Background:**

UniProt Entry: [Q07075](#);NCBI Gene Entry: [2028](#)

### **Application Information**

Molecular Weight: Predicted, 109 kDa, observed, 250 kDa Clonality: Rabbit monoclonal antibody Clone ID: 23GB5325 Species Reactivity: Human, Mouse, Rat Applications Tested: Western Blotting (WB)

### **Immunogen**

A synthesized peptide derived from human Aminopeptidase A / CD249

### **Isotype**

Rabbit IgG

### **Storage Buffer**

Supplied in PBS (pH 7.4) containing 50% glycerol, and 0.02% sodium azide.

### Storage

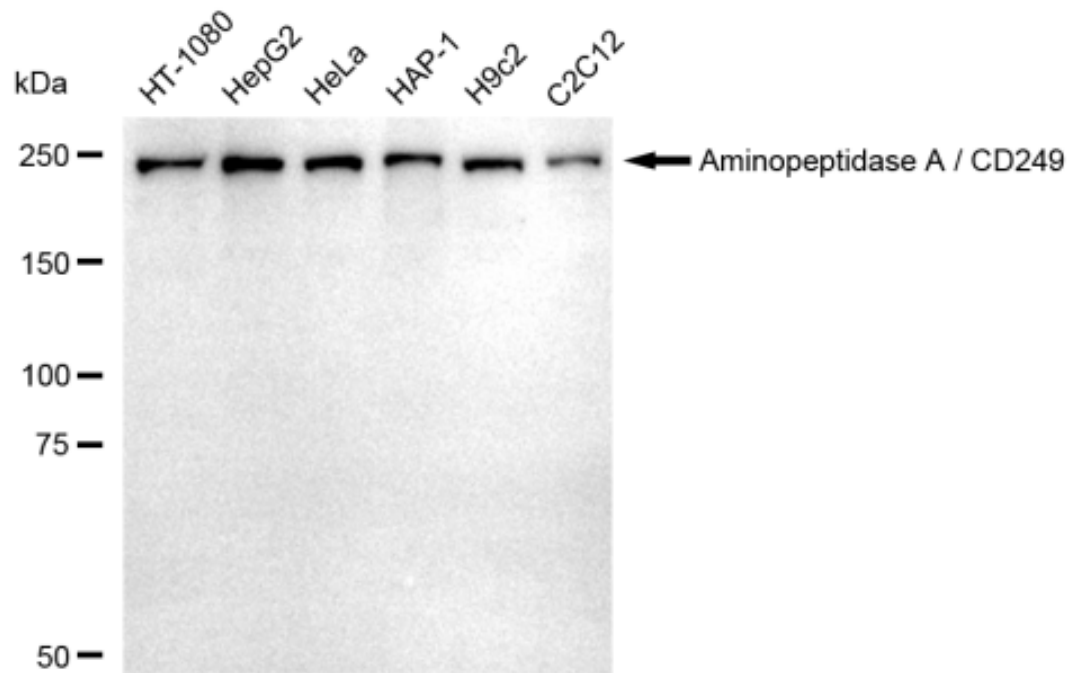
Store at -20 °C for one year.

### Recommended Dilutions

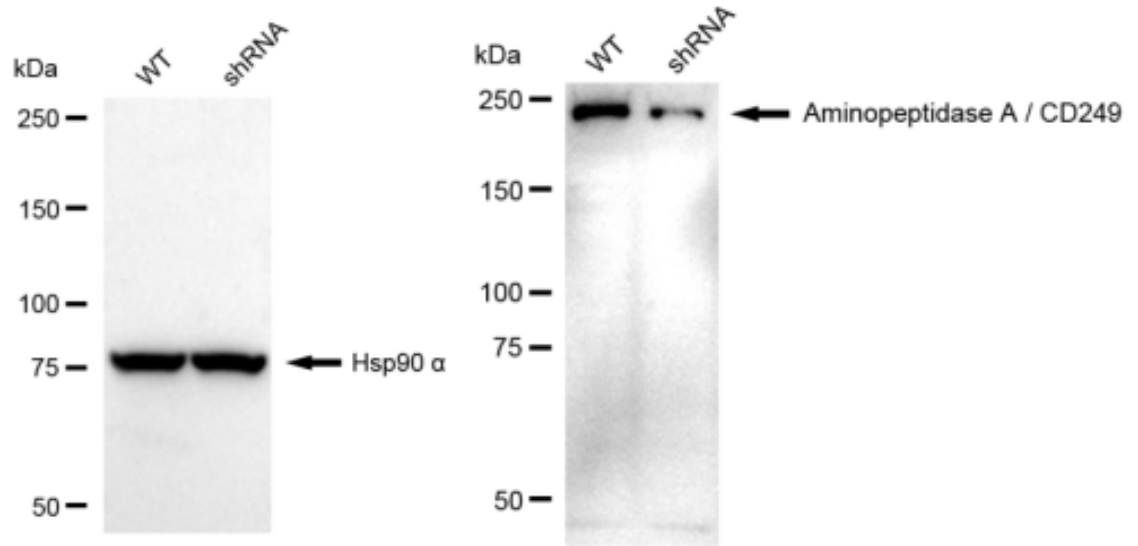
Western Blotting (WB): 1:1,000-1:5,000

### Protocols

For general and specific antibody protocols please visit our website. Read all instructions before using this product.



Western blotting analysis using anti-Aminopeptidase A / CD249 antibody 1:5,000 and HRP-conjugated goat anti-rabbit secondary antibody 1:20,000 respectively. Image was developed using FeQ™ ECL Substrate Kit .



Western blotting analysis using anti-Aminopeptidase A / CD249 antibody 1:5,000 and HRP-conjugated goat anti-rabbit secondary antibody 1:20,000 respectively. Image was developed using FeQ™ ECL Substrate Kit .