



SunLong Biotech Co.,LTD  
Tel: 0086-571- 56623320 Fax:0086-571- 56623318  
E-mail:sales@sunlongbiotech.com  
www.sunlongbiotech.com

## [KD-Validated] Anti-ELP4 Rabbit Monoclonal Antibody

Cat No.: KD-10361

### Aliases:

ELP4; Elongator Acetyltransferase Complex Subunit 4; PAXNEB; Elongator Complex Protein 4; PAX6 Neighbor Gene Protein; C11orf19; HELP4; Elongation Protein 4 Homolog (*S. Cerevisiae*); Chromosome 11 Open Reading Frame 19; Elongation Protein 4 Homolog; DJ68P15A.1; C11ORF19; PAX6NEB; AN2; AN

### Background:

UniProt Entry: [Q96EB1](#);NCBI Gene Entry: [26610](#)

### Application Information

Molecular Weight: Predicted, 47 kDa, observed, 46 kDa Clonality: Rabbit monoclonal antibody Clone ID: 23GB5310 Species Reactivity: Human, Mouse, Rat Applications Tested: Western Blotting (WB), Flow Cytometry (FCM)

### Immunogen

A synthesized peptide derived from human ELP4

### Isotype

Rabbit IgG

### Storage Buffer

Supplied in PBS (pH 7.4) containing 50% glycerol, and 0.02% sodium azide.

### Storage

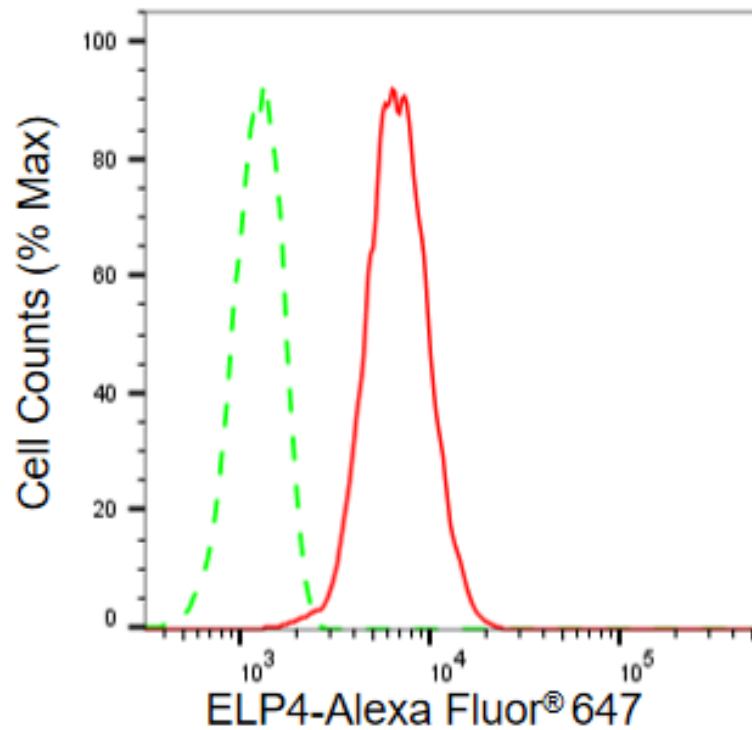
Store at -20 °C for one year.

### Recommended Dilutions

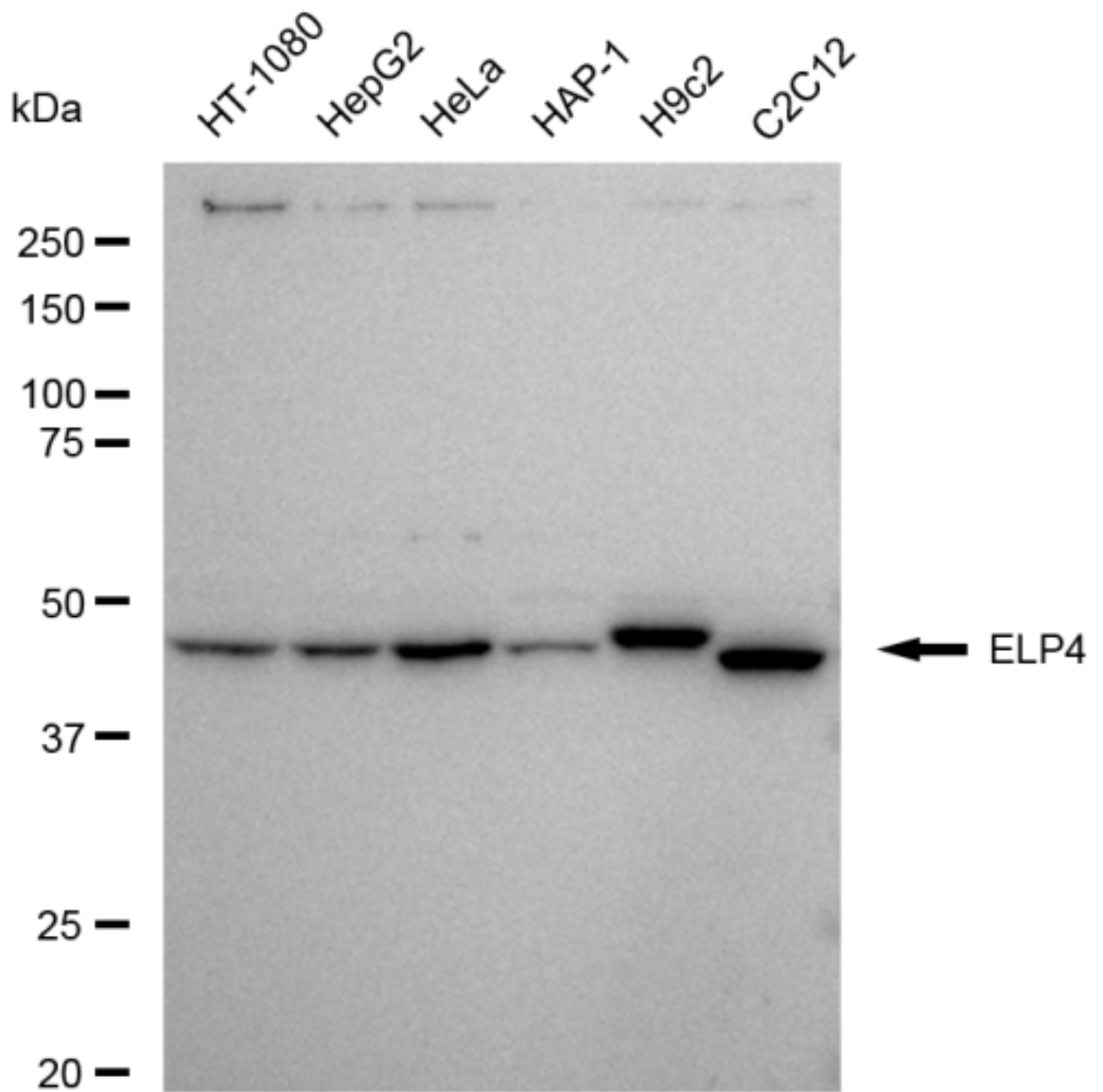
Western Blotting (WB): 1:1,000-1:5,000 Flow Cytometry (FCM): 1:2,000

### Protocols

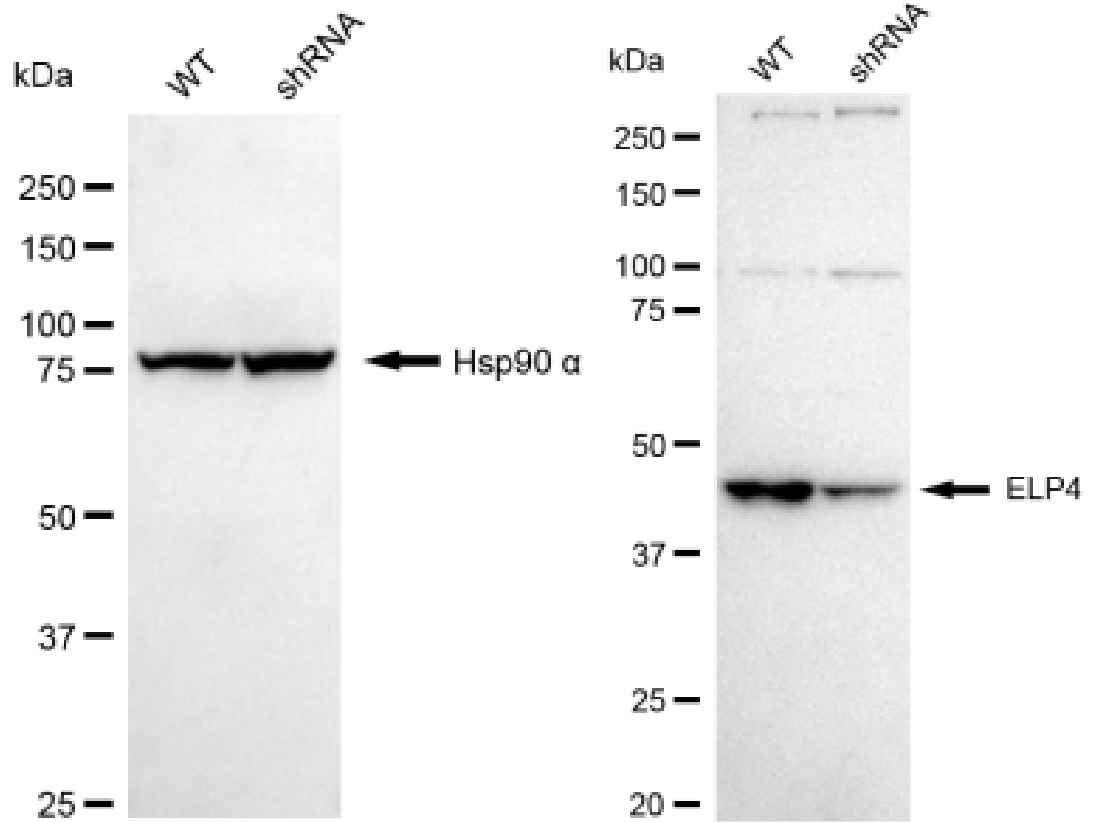
For general and specific antibody protocols please visit our website. Read all instructions before using this product.



Flow cytometric analysis of ELP4 expression in C2C12 cells using ELP4 antibody 1:2,000. Green, isotype control; red, ELP4.



Western blotting analysis using anti-ELP4 antibody 1:5,000 and HRP-conjugated goat anti-rabbit secondary antibody 1:20,000 respectively. Image was developed using FeQ™ ECL Substrate Kit .



Western blotting analysis using anti-ELP4 antibody 1:5,000 and HRP-conjugated goat anti-rabbit secondary antibody 1:20,000 respectively. Image was developed using FeQ™ ECL Substrate Kit .