



SunLong Biotech Co.,LTD
Tel: 0086-571- 56623320 Fax:0086-571- 56623318
E-mail:sales@sunlongbiotech.com
www.sunlongbiotech.com

[KD-Validated] Anti-Phospho-eIF4EBP1/2/3 (T46+T46+T32) Rabbit Monoclonal Antibody

Cat No.: KD-10359

Aliases:

EIF4EBP1/2/3; Eukaryotic Translation Initiation Factor 4E Binding Protein 1/2/3; PHAS-I; 4E-BP1/2/3; Phosphorylated Heat- And Acid-Stable Protein Regulated By Insulin 1/2/3; Eukaryotic Translation Initiation Factor 4E-Binding Protein 1/2/3; EIF4E-Binding Protein 1/2/3; 4EBP1/2/3; BP-1/2/3

Background:

UniProt Entry: [Q13541/Q13542/O60516](#);NCBI Gene Entry: [1978/1979/8637](#)

Application Information

Molecular Weight: Predicted, 13 kDa, observed, 21 kDa Clonality: Rabbit monoclonal antibody Clone ID: 23GB3850 Species Reactivity: Human, Mouse, Rat Applications Tested: Western Blotting (WB), Flow Cytometry (FCM), Immunocytochemistry (IC)

Immunogen

A synthesized peptide derived from human Phospho-eIF4EBP1/2/3 (T46+T46+T32)

Isotype

Rabbit IgG

Storage Buffer

Supplied in PBS (pH 7.4) containing 50% glycerol, and 0.02% sodium azide.

Storage

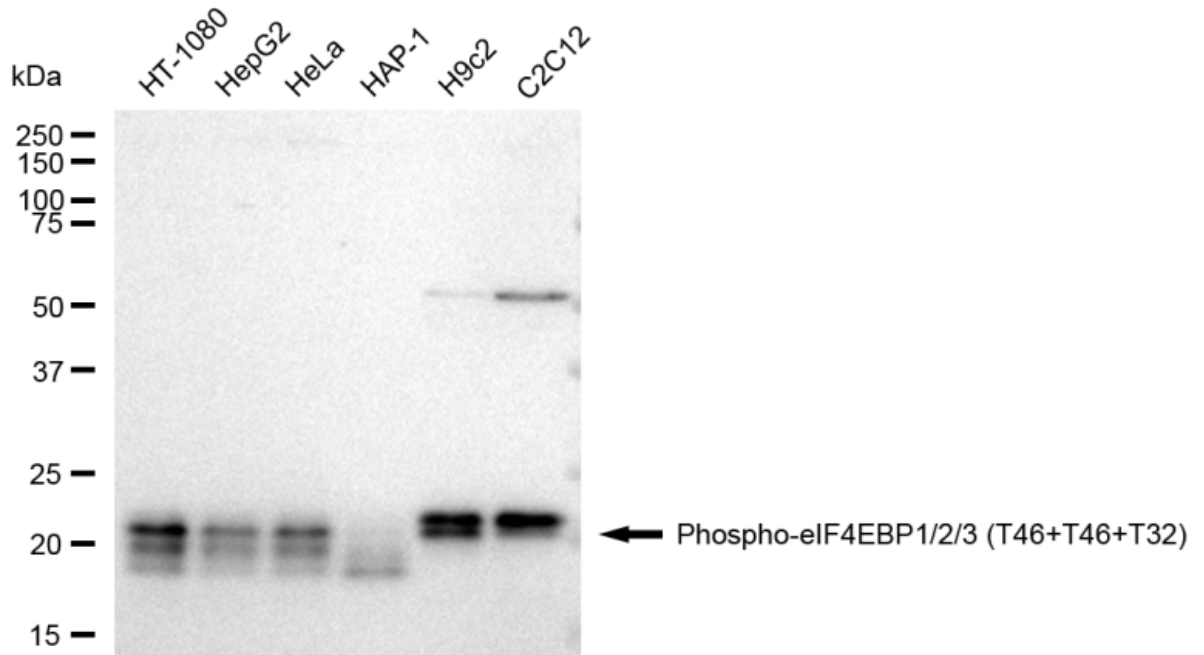
Store at -20 °C for one year.

Recommended Dilutions

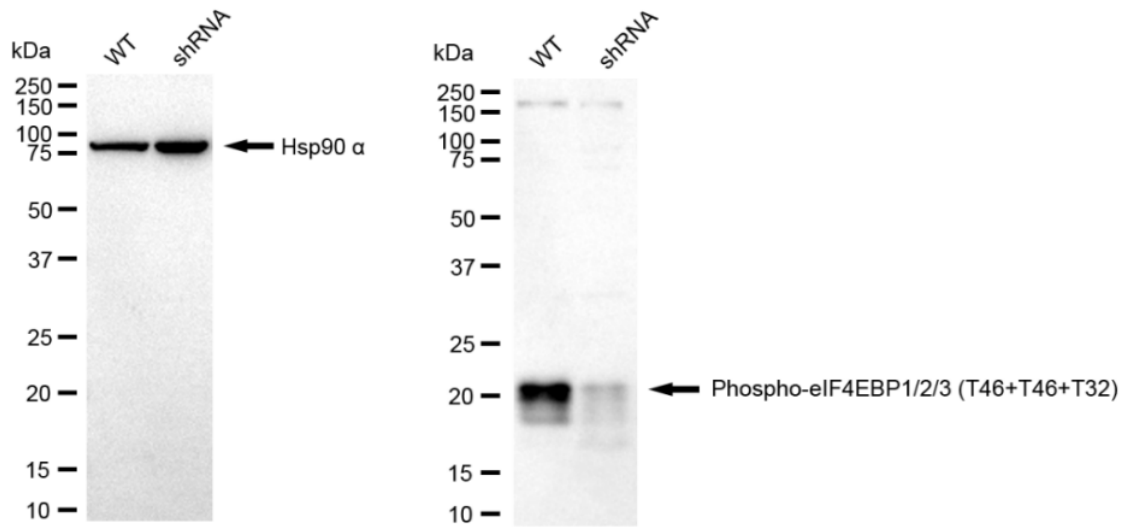
Western Blotting (WB): 1:1,000-1:5,000 Flow Cytometry (FCM): 1:2,000
Immunocytochemistry (IC): 1:1,000

Protocols

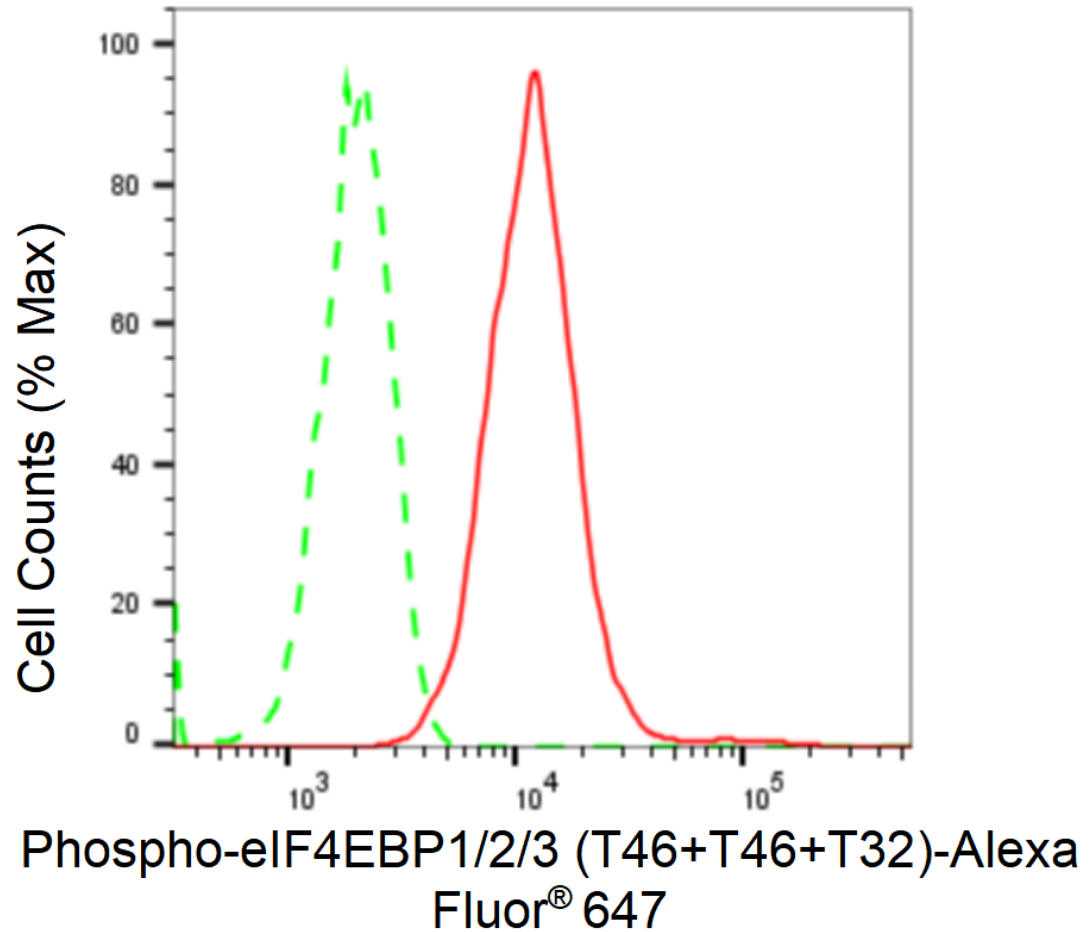
For general and specific antibody protocols please visit our website. Read all instructions before using this product.



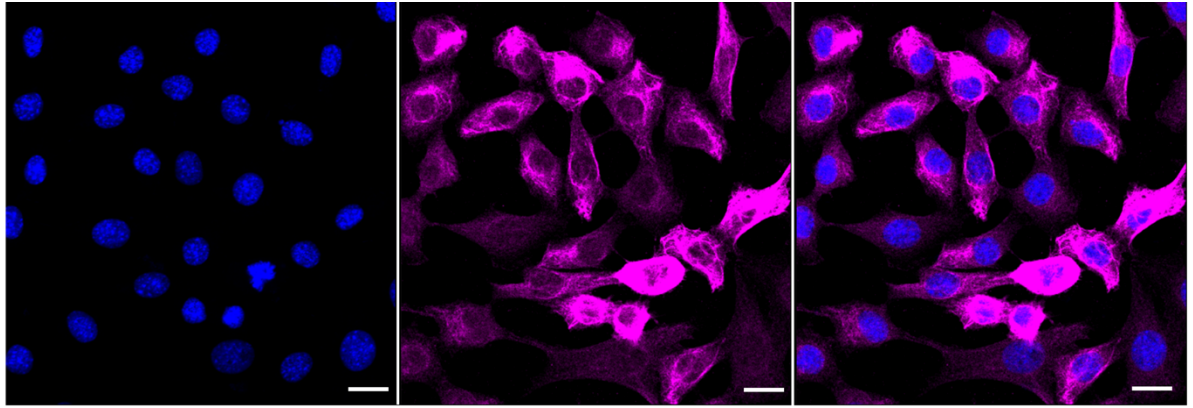
Western blotting analysis using anti-Phospho-eIF4EBP1/2/3 (T46+T46+T32) antibody 1:5,000 and HRP-conjugated goat anti-rabbit secondary antibody 1:20,000 respectively. Image was developed using FeQ™ ECL Substrate Kit .



Western blotting analysis using anti-Phospho-eIF4EBP1/2/3 (T46+T46+T32) antibody 1:5,000 and HRP-conjugated goat anti-rabbit secondary antibody 1:20,000 respectively. Image was developed using FeQ™ ECL Substrate Kit .



Flow cytometric analysis of Phospho-eIF4EBP1/2/3 (T46+T46+T32) expression in C2C12 cells using Phospho-eIF4EBP1/2/3 (T46+T46+T32) antibody 1:2,000. Green, isotype control; red, Phospho-eIF4EBP1/2/3 (T46+T46+T32).



Immunocytochemical staining of C2C12 cells with Phospho-eIF4EBP1/2/3 (T46+T46+T32) antibody 1:1,000. Nuclei were stained blue with DAPI; Phospho-eIF4EBP1/2/3 (T46+T46+T32) was stained magenta with Alexa Fluor® 647. Images were taken using Leica stellaris 5. Protein abundance based on laser Intensity and smart gain: High. Scale bar: 20 μ m.