



SunLong Biotech Co.,LTD
Tel: 0086-571- 56623320 Fax:0086-571- 56623318
E-mail:sales@sunlongbiotech.com
www.sunlongbiotech.com

[KD-Validated] Anti-Phospho-4E BP1 (Thr46) Rabbit Monoclonal Antibody

Cat No.: KD-10357

Aliases:

EIF4EBP1; Eukaryotic Translation Initiation Factor 4E Binding Protein 1; PHAS-I ; 4E-BP1; Phosphorylated Heat- And Acid-Stable Protein Regulated By Insulin 1; Eukaryotic Translation Initiation Factor 4E-Binding Protein 1; EIF4E-Binding Protein 1; 4EBP1; BP-1

Background:

UniProt Entry: [Q13541](#);NCBI Gene Entry: [1978](#)

Application Information

Molecular Weight: Predicted, 13 kDa, observed, 15-20 kDa Clonality: Rabbit monoclonal antibody Clone ID: 24GB4405 Species Reactivity: Human, Mouse, Rat Applications Tested: Western Blotting (WB)

Immunogen

A synthesized peptide derived from human Phospho-4E BP1 (Thr46)

Isotype

Rabbit IgG

Storage Buffer

Supplied in PBS (pH 7.4) containing 50% glycerol, and 0.02% sodium azide.

Storage

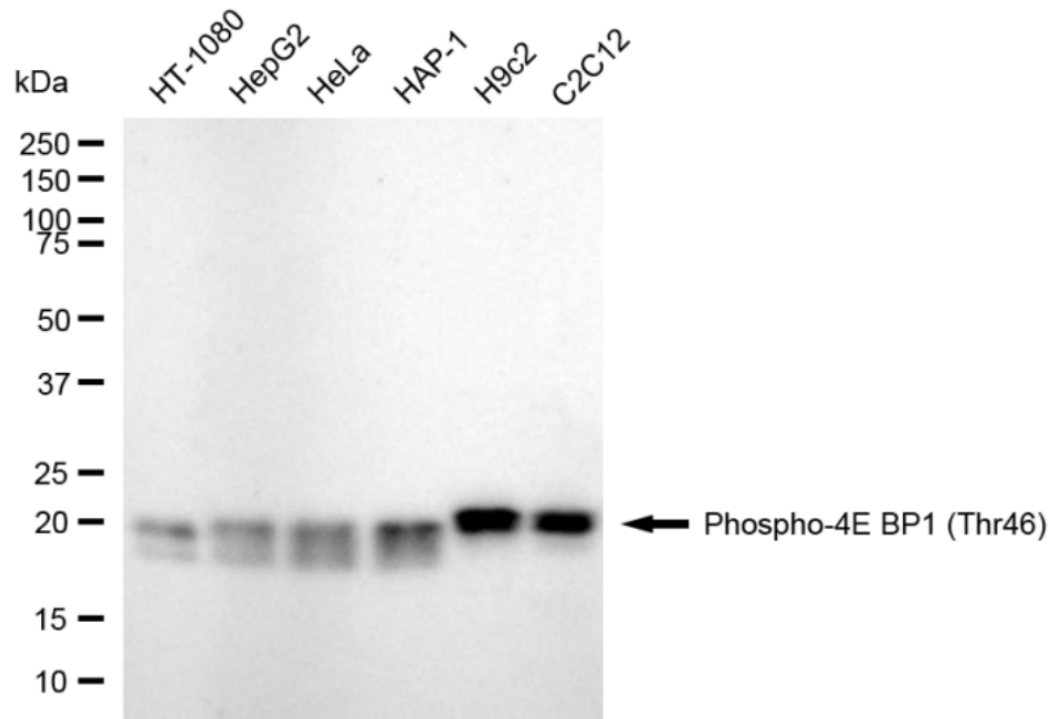
Store at -20 °C for one year.

Recommended Dilutions

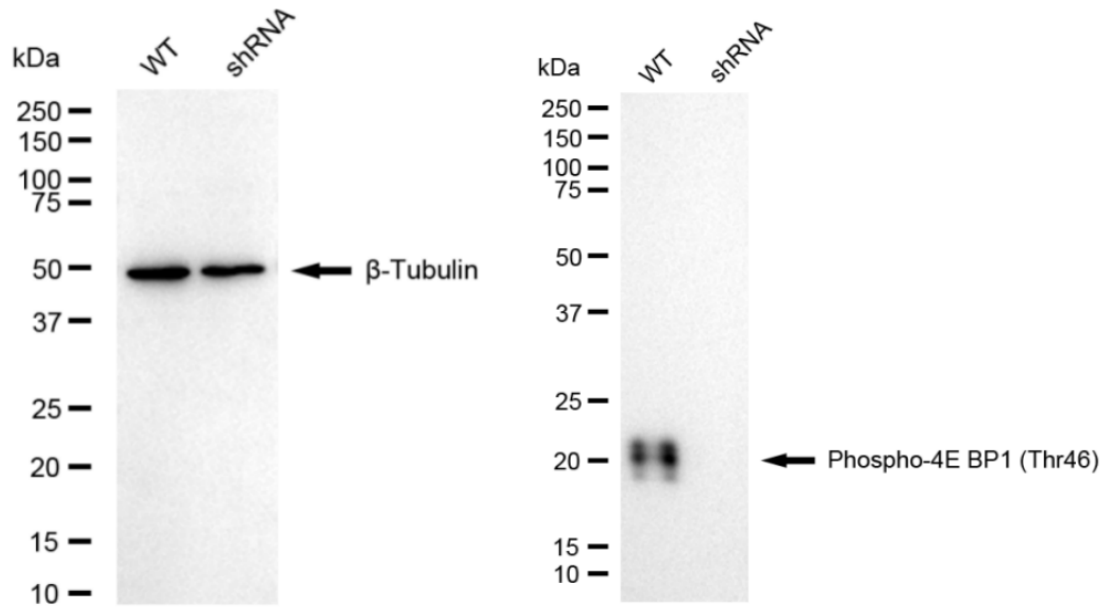
Western Blotting (WB): 1:1,000-1:5,000

Protocols

For general and specific antibody protocols please visit our website. Read all instructions before using this product.



Western blotting analysis using anti-phospho-4E BP1 (Thr46) antibody 1:5,000 and HRP-conjugated goat anti-rabbit secondary antibody 1:20,000 respectively. Image was developed using FeQTM ECL Substrate Kit .



Western blotting analysis using anti-phospho-4E BP1 (Thr46) antibody 1:5,000 and HRP-conjugated goat anti-rabbit secondary antibody 1:20,000 respectively. Image was developed using Plus NaQ™ ECL Substrate Kit 1:2,000. Green, isotype control; red, phospho-4E BP1 (Thr46).