



SunLong Biotech Co.,LTD
Tel: 0086-571- 56623320 Fax:0086-571- 56623318
E-mail:sales@sunlongbiotech.com
www.sunlongbiotech.com

[KD-Validated] Anti-Phospho-eIF4B (S406) Rabbit Monoclonal Antibody

Cat No.: KD-10355

Aliases:

EIF4B; Eukaryotic Translation Initiation Factor 4B; EIF-4B; PRO1843

Background:

UniProt Entry: [P23588](#);NCBI Gene Entry: [1975](#)

Application Information

Molecular Weight: Predicted, 69 kDa, observed, 75 kDa Clonality: Rabbit monoclonal antibody Clone ID: 23GB3905 Species Reactivity: Human, Mouse, Rat Applications Tested: Western Blotting (WB), Flow Cytometry (FCM)

Immunogen

A synthesized peptide derived from human Phospho-eIF4B (S406)

Isotype

Rabbit IgG

Storage Buffer

Supplied in PBS (pH 7.4) containing 50% glycerol, and 0.02% sodium azide.

Storage

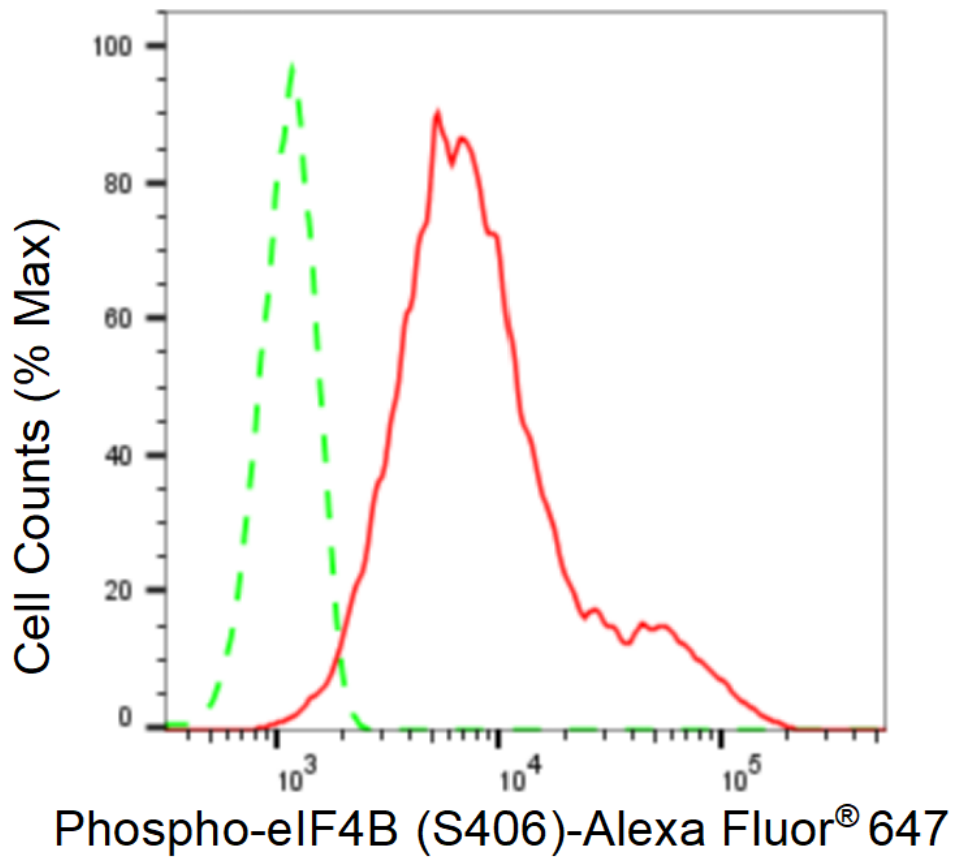
Store at -20 °C for one year.

Recommended Dilutions

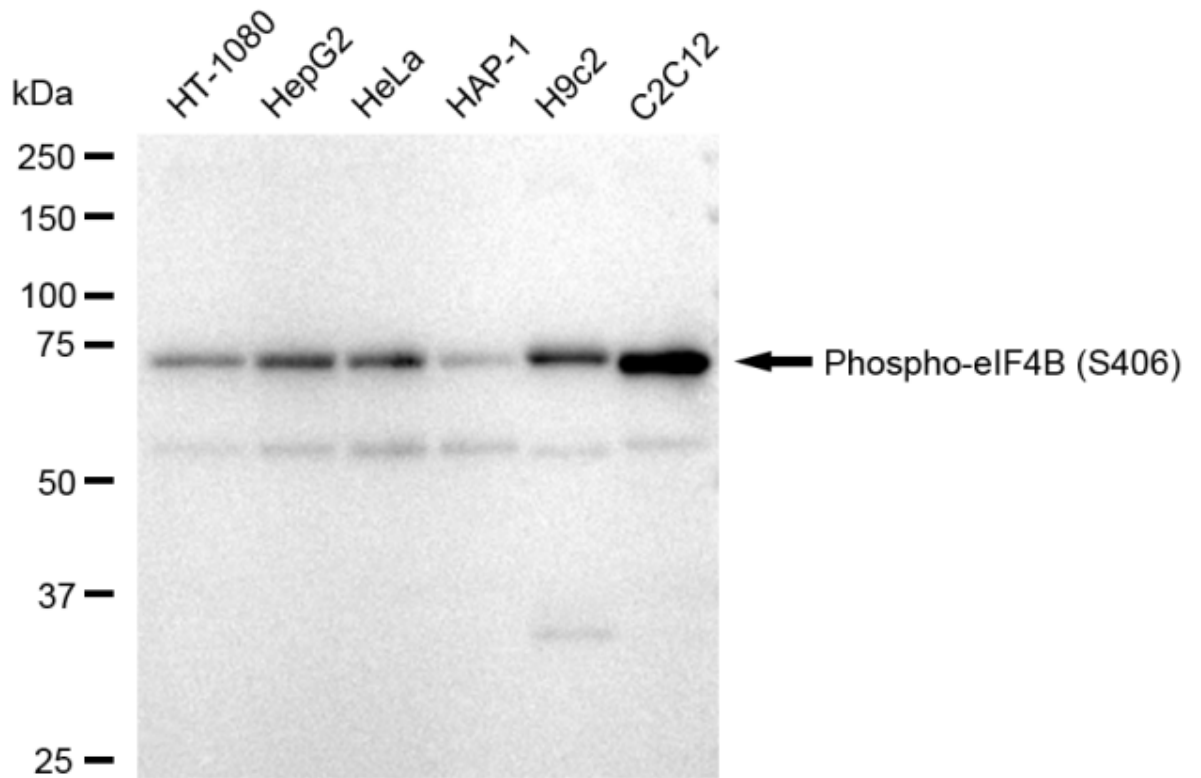
Western Blotting (WB): 1:1,000-1:5,000 Flow Cytometry (FCM): 1:2,000

Protocols

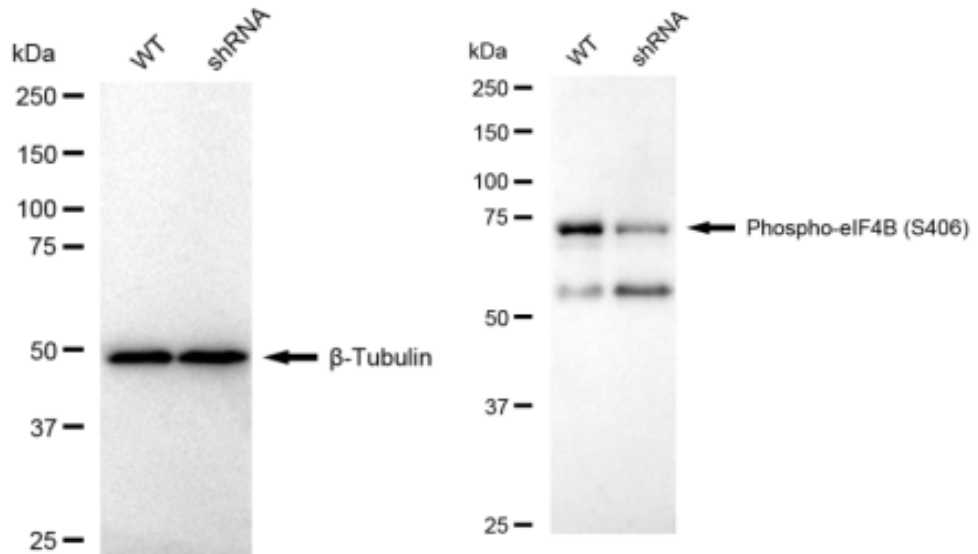
For general and specific antibody protocols please visit our website. Read all instructions before using this product.



Flow cytometric analysis of Phospho-eIF4B (S406) expression in C2C12 cells using Phospho-eIF4B (S406) antibody (KD-10355, 1:2,000). Green, isotype control; red, Phospho-eIF4B (S406).



Western blotting analysis using anti-Phospho-eIF4B (S406) antibody 1:5,000 and HRP-conjugated goat anti-rabbit secondary antibody 1:20,000 respectively. Image was developed using FeQ™ ECL Substrate Kit .



Western blotting analysis using anti-Phospho-eIF4B (S406) antibody 1:5,000 and HRP-conjugated goat anti-rabbit secondary antibody 1:20,000 respectively. Image was developed using FeQ™ ECL Substrate Kit .