



SunLong Biotech Co.,LTD  
Tel: 0086-571- 56623320 Fax:0086-571- 56623318  
E-mail:sales@sunlongbiotech.com  
www.sunlongbiotech.com

## **[KD-Validated] Anti-EIF4A1 Rabbit Monoclonal Antibody**

Cat No.: KD-10354

### **Aliases:**

EIF4A1; Eukaryotic Translation Initiation Factor 4A1; DDX2A; EIF-4A; EIF4A; ATP-Dependent RNA Helicase EIF4A-1; Eukaryotic Initiation Factor 4A-I; EIF-4A-I; EIF4A-I; Eukaryotic Translation Initiation Factor 4A, Isoform 1; Eukaryotic Translation Initiation Factor 4A; Eukaryotic Initiation Factor 4A; EC 3.6.4.13; EC 3.6.1

### **Background:**

UniProt Entry: [P60842](#);NCBI Gene Entry: [1973](#)

### **Application Information**

Molecular Weight: Predicted, 46 kDa, observed, 46 kDa Clonality: Rabbit monoclonal antibody Clone ID: 23GB3835 Species Reactivity: Human, Mouse, Rat Applications Tested: Western Blotting (WB), Flow Cytometry (FCM)

### **Immunogen**

A synthesized peptide derived from human eIF4A1

### **Isotype**

Rabbit IgG

### **Storage Buffer**

Supplied in PBS (pH 7.4) containing 50% glycerol, and 0.02% sodium azide.

### Storage

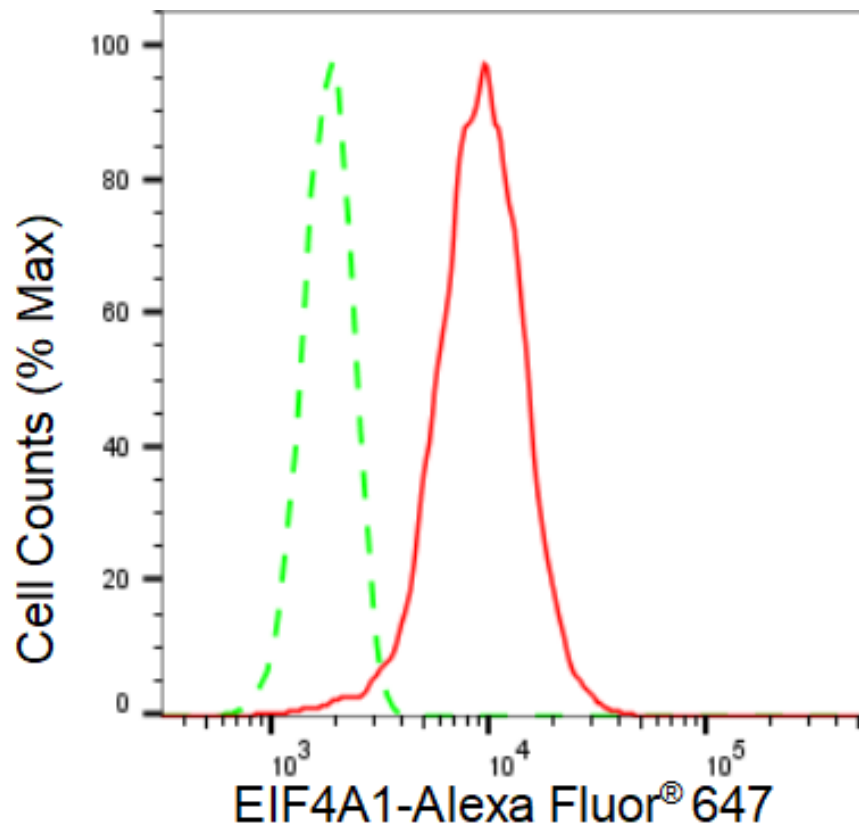
Store at -20 °C for one year.

### Recommended Dilutions

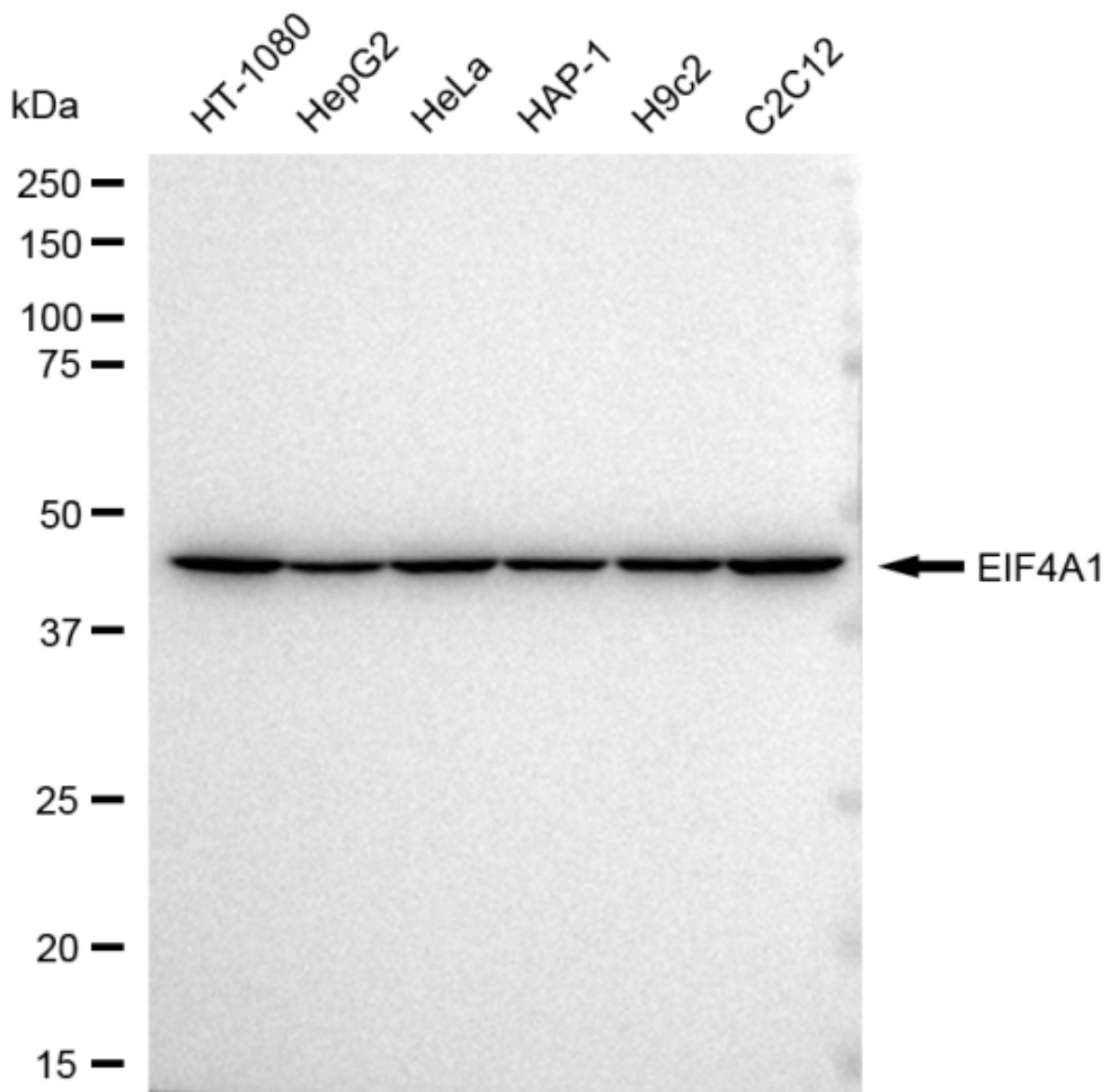
Western Blotting (WB): 1:1,000-1:5,000 Flow Cytometry (FCM): 1:2,000

### Protocols

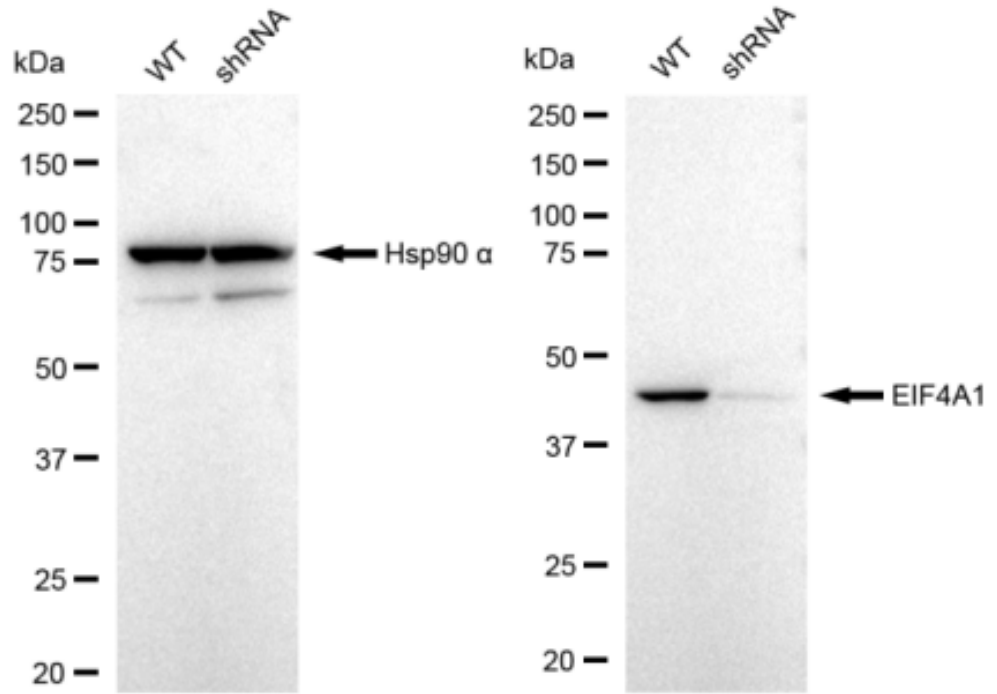
For general and specific antibody protocols please visit our website. Read all instructions before using this product.



Flow cytometric analysis of EIF4A1 expression in HT-1080 cells using EIF4A1 antibody 1:2,000. Green, isotype control; red, EIF4A1.



Western blotting analysis using anti-EIF4A1 antibody 1:5,000 and HRP-conjugated goat anti-rabbit secondary antibody 1:20,000 respectively. Image was developed using FeQ™ ECL Substrate Kit .



Western blotting analysis using anti-EIF4A1 antibody 1:5,000 and HRP-conjugated goat anti-rabbit secondary antibody 1:20,000 respectively. Image was developed using FeQ™ ECL Substrate Kit .