



SunLong Biotech Co.,LTD  
Tel: 0086-571- 56623320 Fax:0086-571- 56623318  
E-mail:sales@sunlongbiotech.com  
www.sunlongbiotech.com

## **[KD-Validated] Anti-Phospho-eIF2 alpha (Ser51) Rabbit Monoclonal Antibody**

Cat No.: KD-10352

### **Aliases:**

EIF2S1; Eukaryotic Translation Initiation Factor 2 Subunit Alpha; EIF-2alpha; EIF2A;  
Eukaryotic Translation Initiation Factor 2, Subunit 1 Alpha, 35kDa; Eukaryotic  
Translation Initiation Factor 2 Subunit 1; EIF-2-Alpha; EIF2-Alpha; EIF-2A; EIF2;  
Eukaryotic Translation Initiation Factor 2, Subunit 1 (Alpha, 35kD ); EIF-2

### **Background:**

UniProt Entry: [P05198](#);NCBI Gene Entry: [1965](#)

### **Application Information**

Molecular Weight: Predicted, 36 kDa, observed, 36 kDa Clonality: Rabbit monoclonal  
antibody Clone ID: 24GB3905 Species Reactivity: Human, Mouse, Rat Applications  
Tested: Western Blotting (WB), Flow Cytometry (FCM), Immunocytochemistry (IC)

### **Immunogen**

A synthesized peptide derived from human Phospho-eIF2 alpha (Ser51)

### **Isotype**

Rabbit IgG

### **Storage Buffer**

Supplied in PBS (pH 7.4) containing 50% glycerol, and 0.02% sodium azide.

### Storage

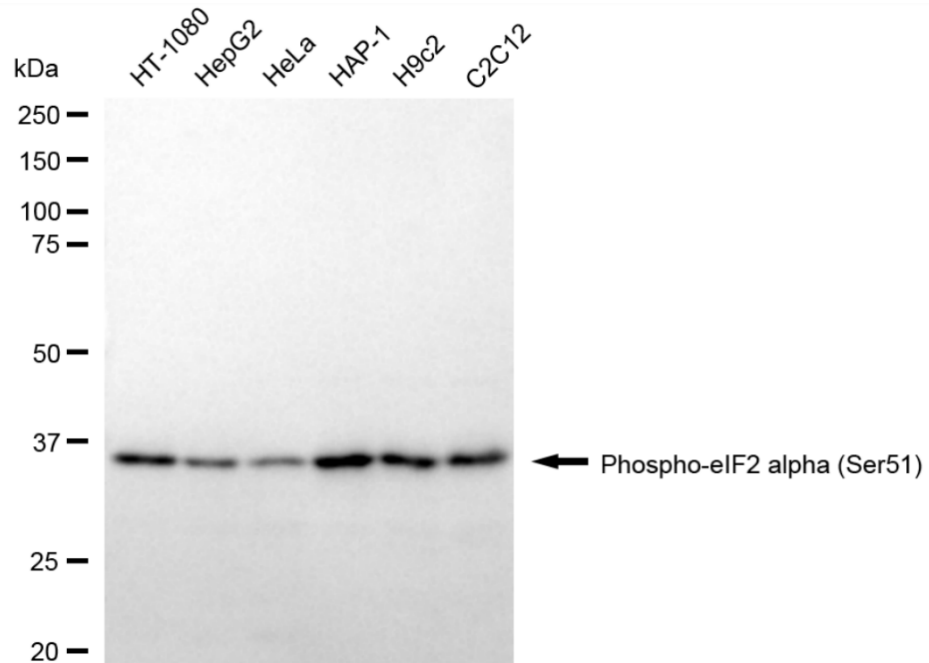
Store at -20 °C for one year.

### Recommended Dilutions

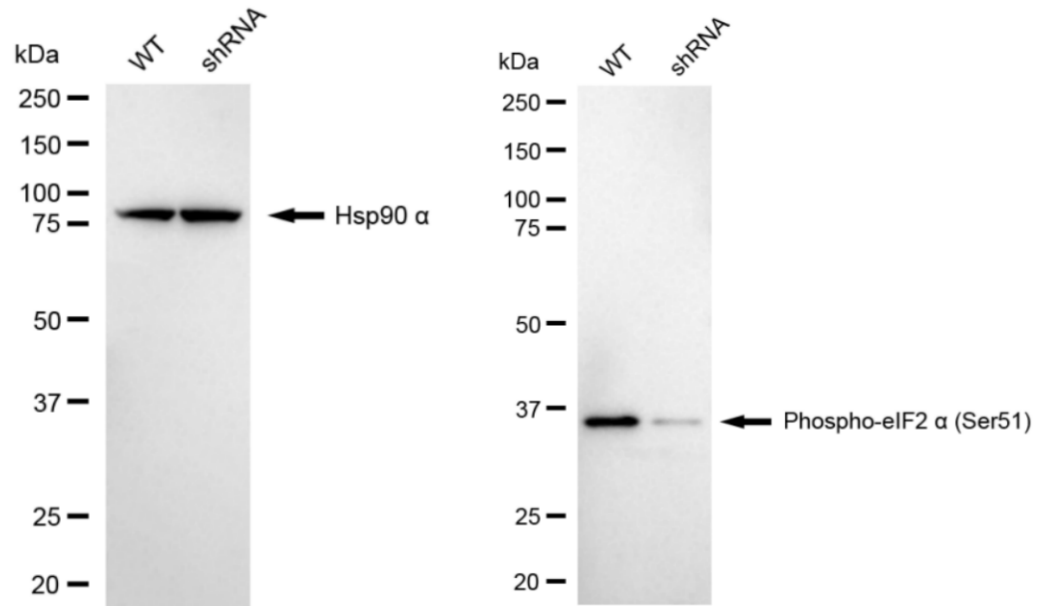
Western Blotting (WB): 1:1,000-1:5,000 Flow Cytometry (FCM): 1:2,000  
Immunocytochemistry (IC): 1:1,000

### Protocols

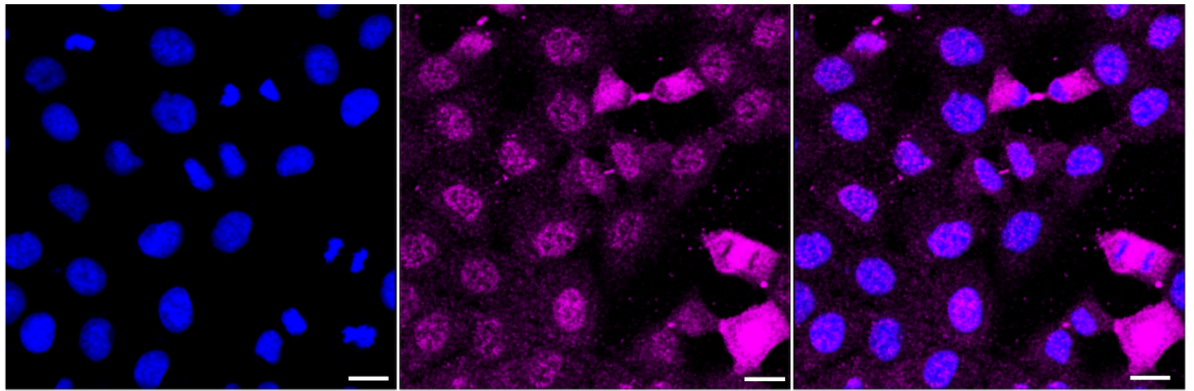
For general and specific antibody protocols please visit our website. Read all instructions before using this product.



Western blotting analysis using anti-phospho-eIF2 alpha (Ser51) antibody 1:5,000 and HRP-conjugated goat anti-rabbit secondary antibody 1:20,000 respectively. Image was developed using FeQTM ECL Substrate Kit .



Western blotting analysis using anti-phospho-eIF2 alpha (Ser51) antibody 1:5,000 and HRP-conjugated goat anti-rabbit secondary antibody 1:20,000 respectively. Image was developed using Plus ECL Super Kit 1:2,000. Green, isotype control; red, phospho-eIF2 alpha (Ser51).



Immunocytochemical staining of HT-1080 cells with anti-Phospho-eIF2 alpha (Ser51) antibody 1:1,000 . Nuclei were stained blue with DAPI; Phospho-eIF2 alpha (Ser51) was stained magenta with Alexa Fluor<sup>®</sup> 647. Images were taken using Leica stellaris 5. Protein abundance based on laser Intensity and smart gain: Medium. Scale bar: 20  $\mu$ m.