



SunLong Biotech Co.,LTD
Tel: 0086-571- 56623320 Fax:0086-571- 56623318
E-mail:sales@sunlongbiotech.com
www.sunlongbiotech.com

[KD-Validated] Anti-EHMT2 Rabbit Monoclonal Antibody

Cat No.: KD-10348

Aliases:

Euchromatic Histone Lysine Methyltransferase 2; KMT1C; G9A; C6orf30; BAT8; Euchromatic Histone-Lysine N-Methyltransferase 2; Histone-Lysine N-Methyltransferase EHMT2; Histone H3-K9 Methyltransferase 3; HLA-B Associated Transcript 8; Lysine N-Methyltransferase 1C; H3-K9-HMTase 3; Em:AF134726.3; NG36/G9a; NG36; Histone-Lysine N-Methyltransferase, H3 Lysine-9 Specific 3; Chromosome 6 Open Reading Frame 30; Ankyrin Repeat-Containing Protein; G9A Histone Methyltransferase; HLA-B-Associated Transcript 8; EC 2.1.1.367; Protein G9a; EC 2.1.1.-; GAT8

Background:

UniProt Entry: [Q96KQ7](#);NCBI Gene Entry: [10919](#)

Application Information

Molecular Weight: Predicted, 132 kDa, observed, 160-170 kDa Clonality: Rabbit monoclonal antibody Clone ID: 23GB825 Species Reactivity: Human, Mouse, Rat Applications Tested: Western Blotting (WB), Flow Cytometry (FCM), Immunocytochemistry (IC)

Immunogen

A synthesized peptide derived from human EHMT2

Isotype

Rabbit IgG

Storage Buffer

Supplied in PBS (pH 7.4) containing 50% glycerol, and 0.02% sodium azide.

Storage

Store at -20 °C for one year.

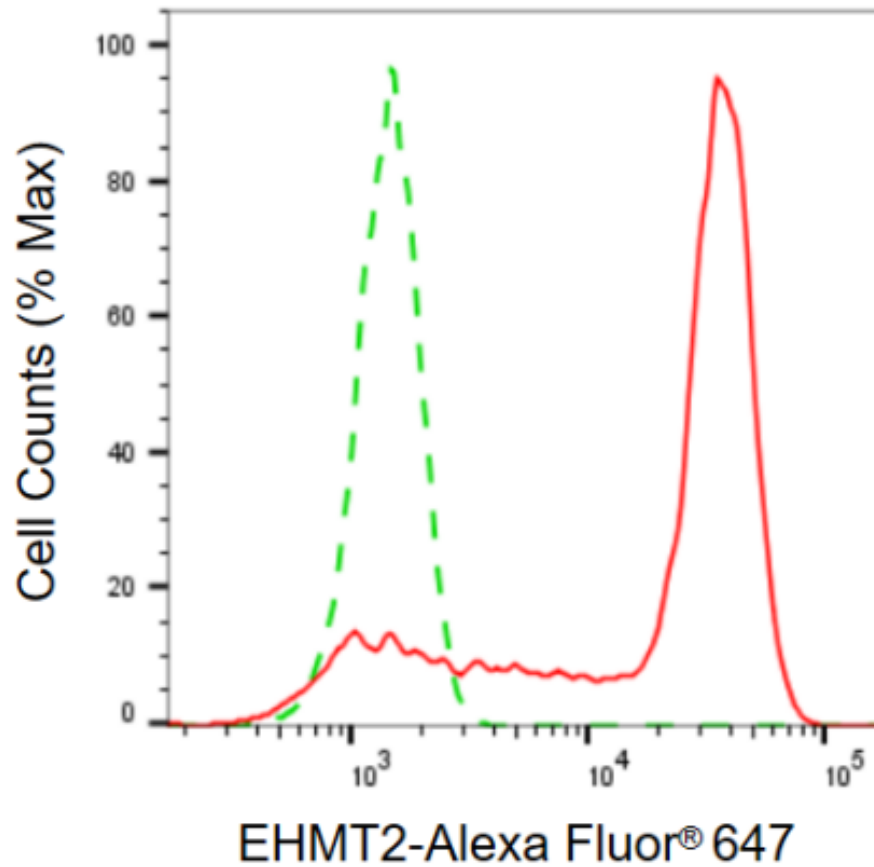
Recommended Dilutions

Western Blotting (WB): 1:1,000-1:5,000 Flow Cytometry (FCM): 1:2,000

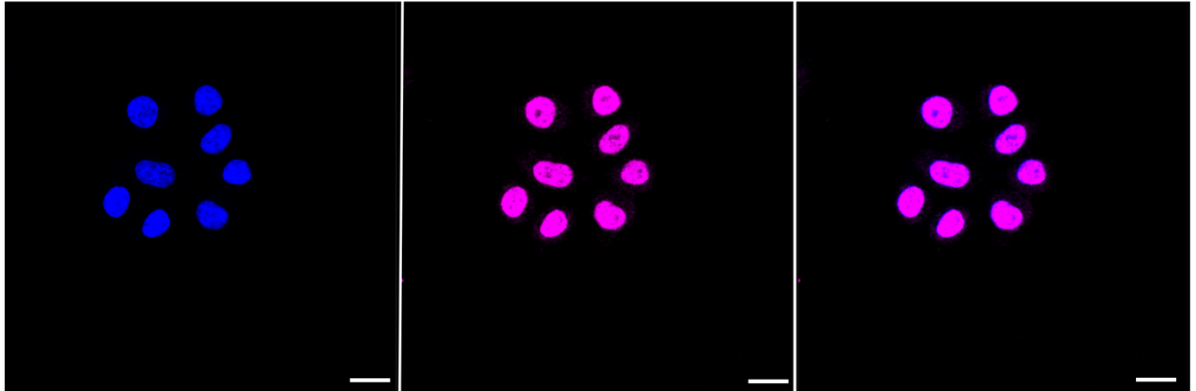
Immunocytochemistry (IC): 1:1,000

Protocols

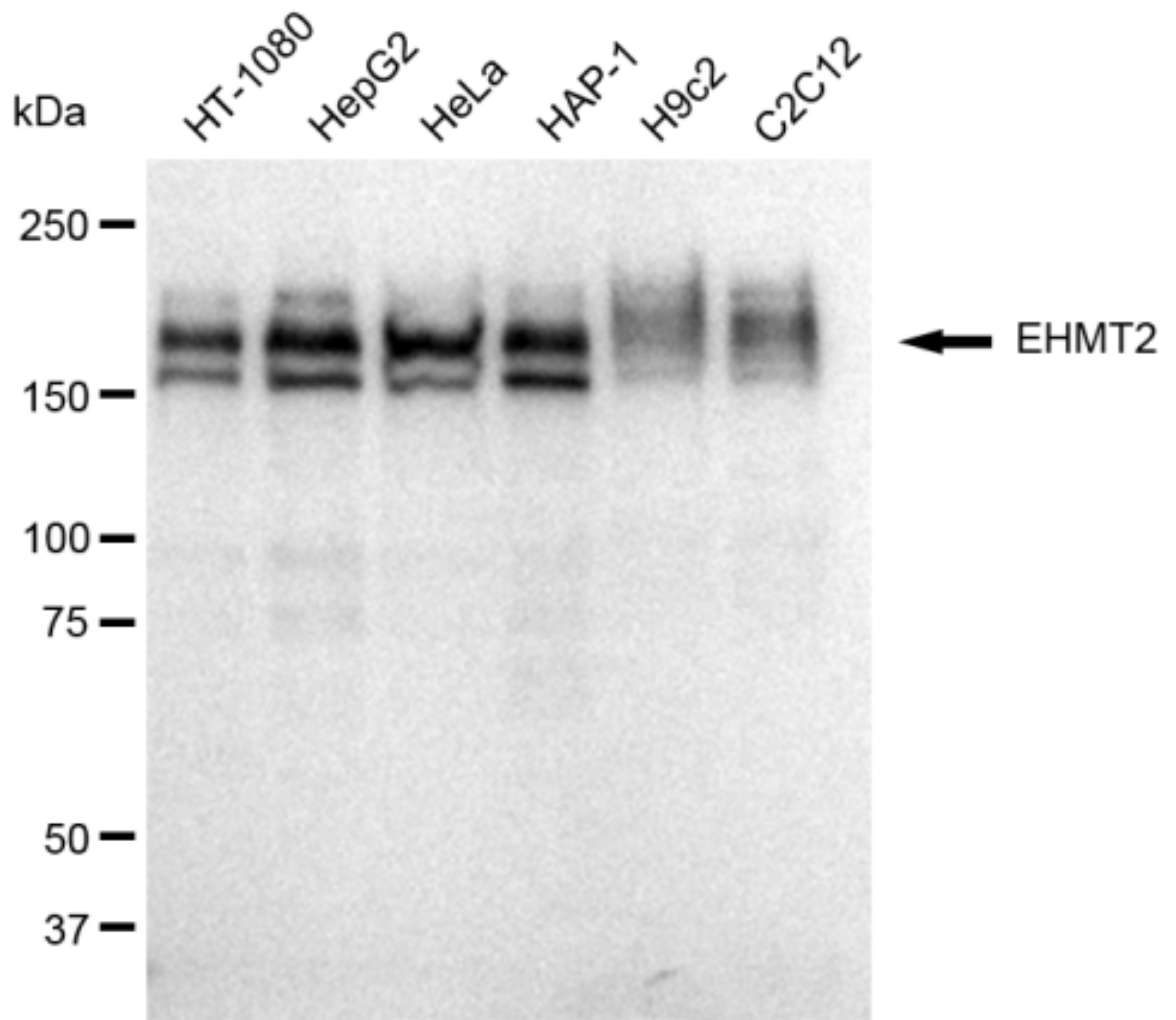
For general and specific antibody protocols please visit our website. Read all instructions before using this product.



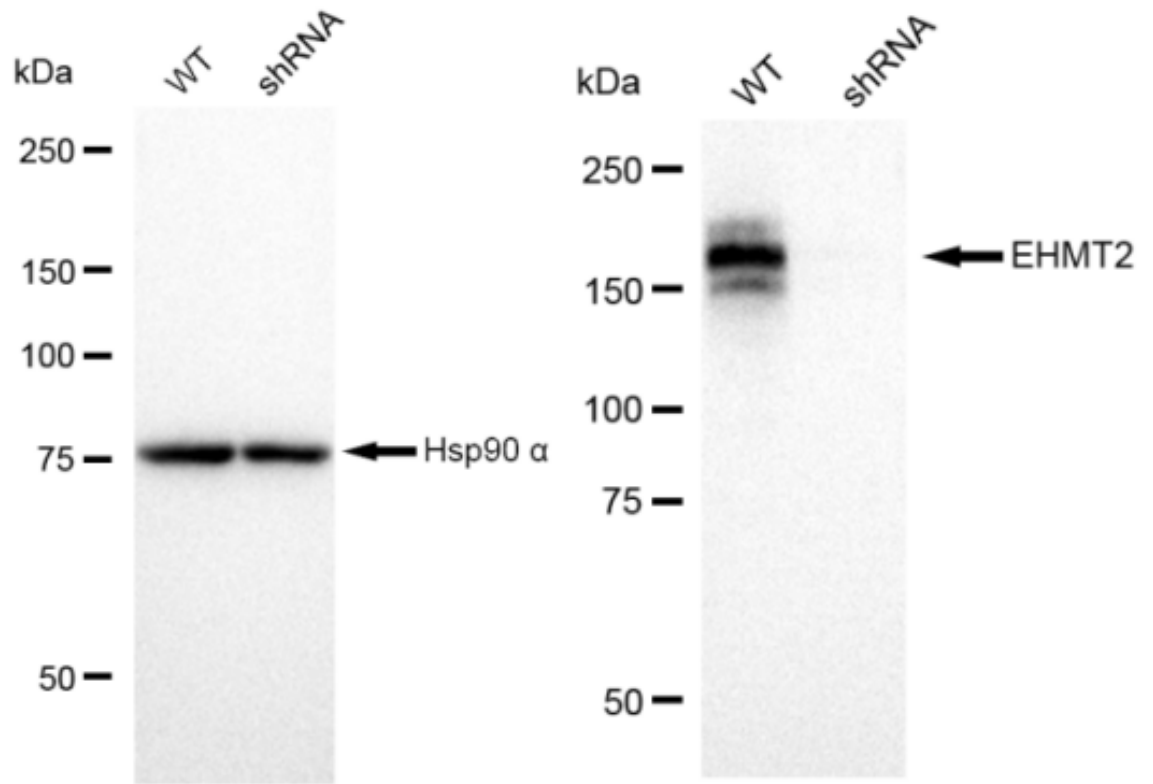
Flow cytometric analysis of EHMT2 expression in HepG2 cells using EHMT2 antibody 1:2,000. Green, isotype control; red, EHMT2 .



Immunocytochemical staining of HepG2 cells with EHMT2 antibody 1:1,000. Nuclei were stained blue with DAPI; EHMT2 was stained magenta with Alexa Fluor® 647. Scale bar: 20 μ m.



Western blotting analysis using anti-EHMT2 antibody 1:5,000 and HRP-conjugated goat anti-rabbit secondary antibody 1:20,000 respectively. Image was developed using FeQ™ ECL Substrate Kit .



Western blotting analysis using anti-EHMT2 antibody 1:5,000 and HRP-conjugated goat anti-rabbit secondary antibody 1:20,000 respectively. Image was developed using FeQ™ ECL Substrate Kit .