



SunLong Biotech Co.,LTD
Tel: 0086-571- 56623320 Fax:0086-571- 56623318
E-mail:sales@sunlongbiotech.com
www.sunlongbiotech.com

[KD-Validated] Anti-EHMT2/G9A Rabbit Monoclonal Antibody

Cat No.: KD-10347

Aliases:

KMT1C; G9A; C6orf3; BAT8; Euchromatic Histone-Lysine N-Methyltransferase; Histone-Lysine N-Methyltransferase EHMT2; Histone H3-K9 Methyltransferase; HLA-B Associated Transcript 8; Lysine N-Methyltransferase 1C; H3-K9-HMTase; Em:AF134726.3; NG36/G9a; NG36; Histone-Lysine N-Methyltransferase, H3 Lysine-9 Specific 3; Chromosome 6 Open Reading Frame 30; Ankyrin Repeat-Containing Protein; G9A Histone Methyltransferase; HLA-B-Associated Transcript 8; EC 2.1.1.367; Protein G9a; EC 2.1.1.-; GAT8

Background:

UniProt Entry: [Q96KQ7](#);NCBI Gene Entry: [10919](#)

Application Information

Molecular Weight: Predicted, 132 kDa, observed, 160-170 kDa Clonality: Rabbit monoclonal antibody Clone ID: 23GB820 Species Reactivity: Human Applications Used: Western Blotting (WB), Flow Cytometry (FCM)

Immunogen

A synthesized peptide derived from human EHMT2/G9A

Isotype

Rabbit IgG

Storage Buffer

Supplied in PBS (pH 7.4) containing 50% glycerol, and 0.02% sodium azide.

Storage

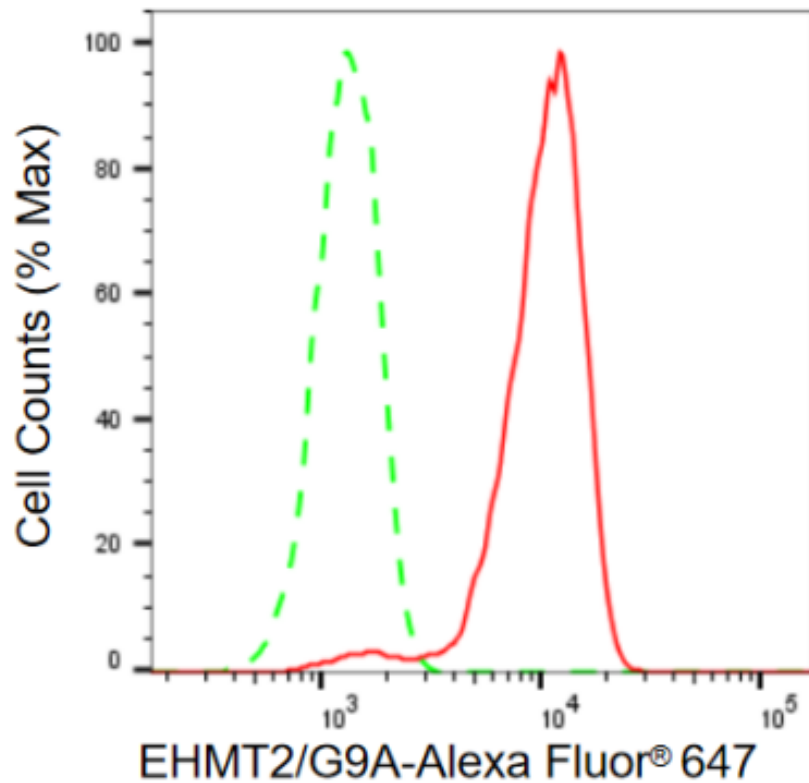
Store at -20 °C for one year.

Recommended Dilutions

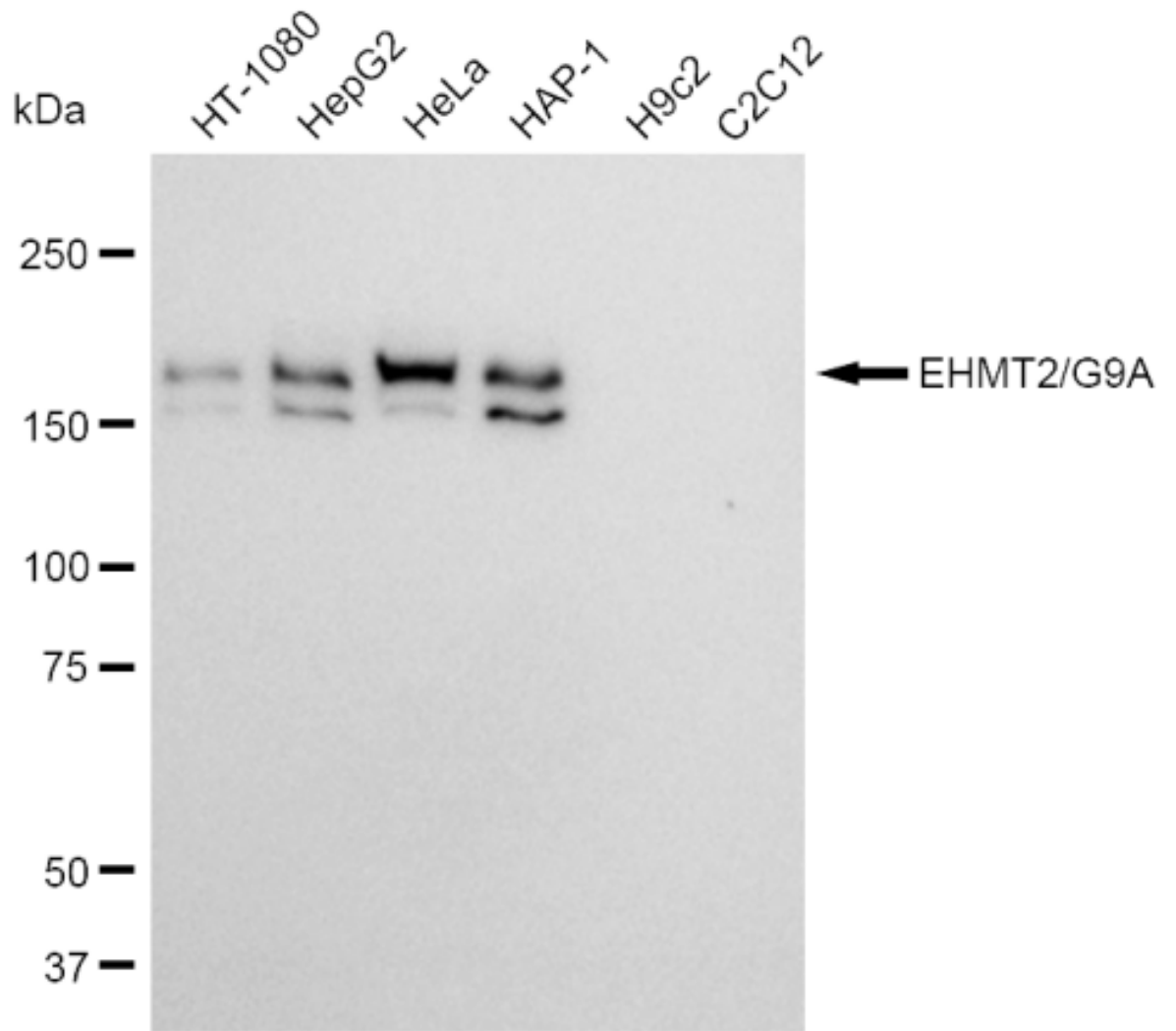
Western Blotting (WB): 1:2,000-1:10,000 Flow Cytometry (FCM): 1:2,000

Protocols

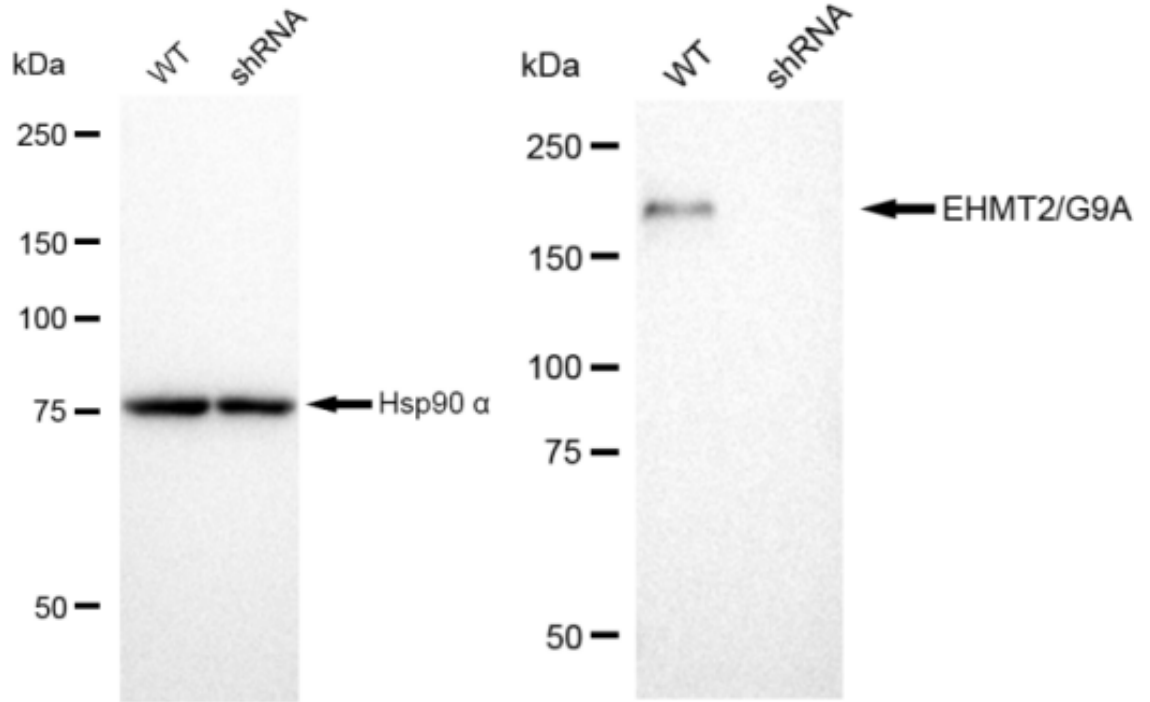
For general and specific antibody protocols please visit our website. Read all instructions before using this product.



Flow cytometric analysis of EHMT2/G9A expression in HeLa cells using EHMT2/G9A antibody 1:2,000. Green, isotype control; red, EHMT2/G9A.



Western blotting analysis using anti-EHMT2/G9A antibody 1:10,000 and HRP-conjugated goat anti-rabbit secondary antibody 1:20,000 respectively. Image was developed using FeQ™ ECL Substrate Kit .



Western blotting analysis using anti-EHMT2/G9A antibody 1:10,000 and HRP-conjugated goat anti-rabbit secondary antibody 1:20,000 respectively. Image was developed using FeQ™ ECL Substrate Kit .