



SunLong Biotech Co.,LTD
Tel: 0086-571- 56623320 Fax:0086-571- 56623318
E-mail:sales@sunlongbiotech.com
www.sunlongbiotech.com

[KD-Validated] Anti-EGFR Rabbit Monoclonal Antibody

Cat No.: KD-10337

Aliases:

EGFR; Epidermal Growth Factor Receptor; ERBB1; ERBB; Receptor Tyrosine-Protein Kinase ErbB-1; Erb-B2 Receptor Tyrosine Kinase 1; Proto-Oncogene C-ErbB-1; EC 2.7.10.1; HER1; Epidermal Growth Factor Receptor (Avian Erythroblastic Leukemia Viral (V-Erb-B) Oncogene Homolog); Erythroblastic Leukemia Viral (V-Erb-B) Oncogene Homolog (Avian); Avian Erythroblastic Leukemia Viral (V-Erb-B) Oncogene Homolog; Epidermal Growth Factor Receptor Tyrosine Kinase Domain; Cell Proliferation-Inducing Protein 61; Cell Growth Inhibiting Protein 40; EGFR VIII; EC 2.7.10; NISBD2; PIG61; MENA

Background:

UniProt Entry: [P00533](#);NCBI Gene Entry: [1956](#)

Application Information

Molecular Weight: Predicted, 134 kDa, observed, 175 kDa Clonality: Rabbit monoclonal antibody Clone ID: 23GB810 Species Reactivity: Human Applications Used: Western Blotting (WB), Immunocytochemistry (IC)

Immunogen

A synthesized peptide derived from human EGFR

Isotype

Rabbit IgG

Storage Buffer

Supplied in PBS (pH 7.4) containing 50% glycerol, and 0.02% sodium azide.

Storage

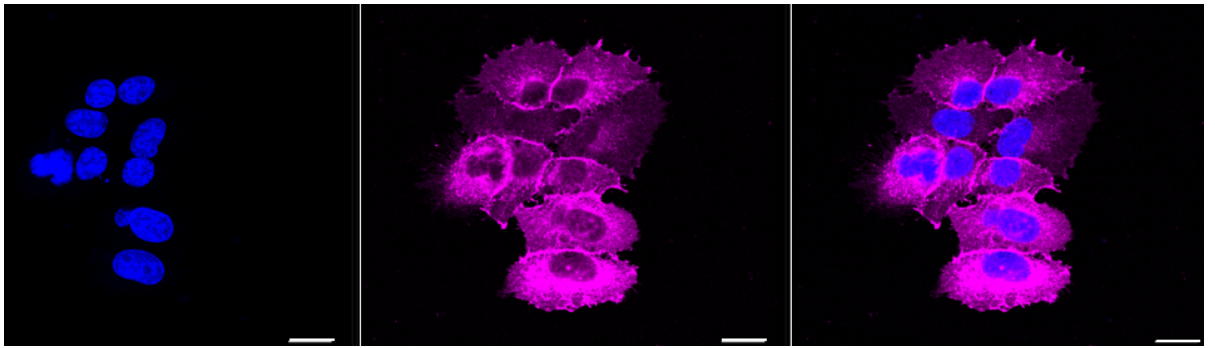
Store at -20 °C for one year.

Recommended Dilutions

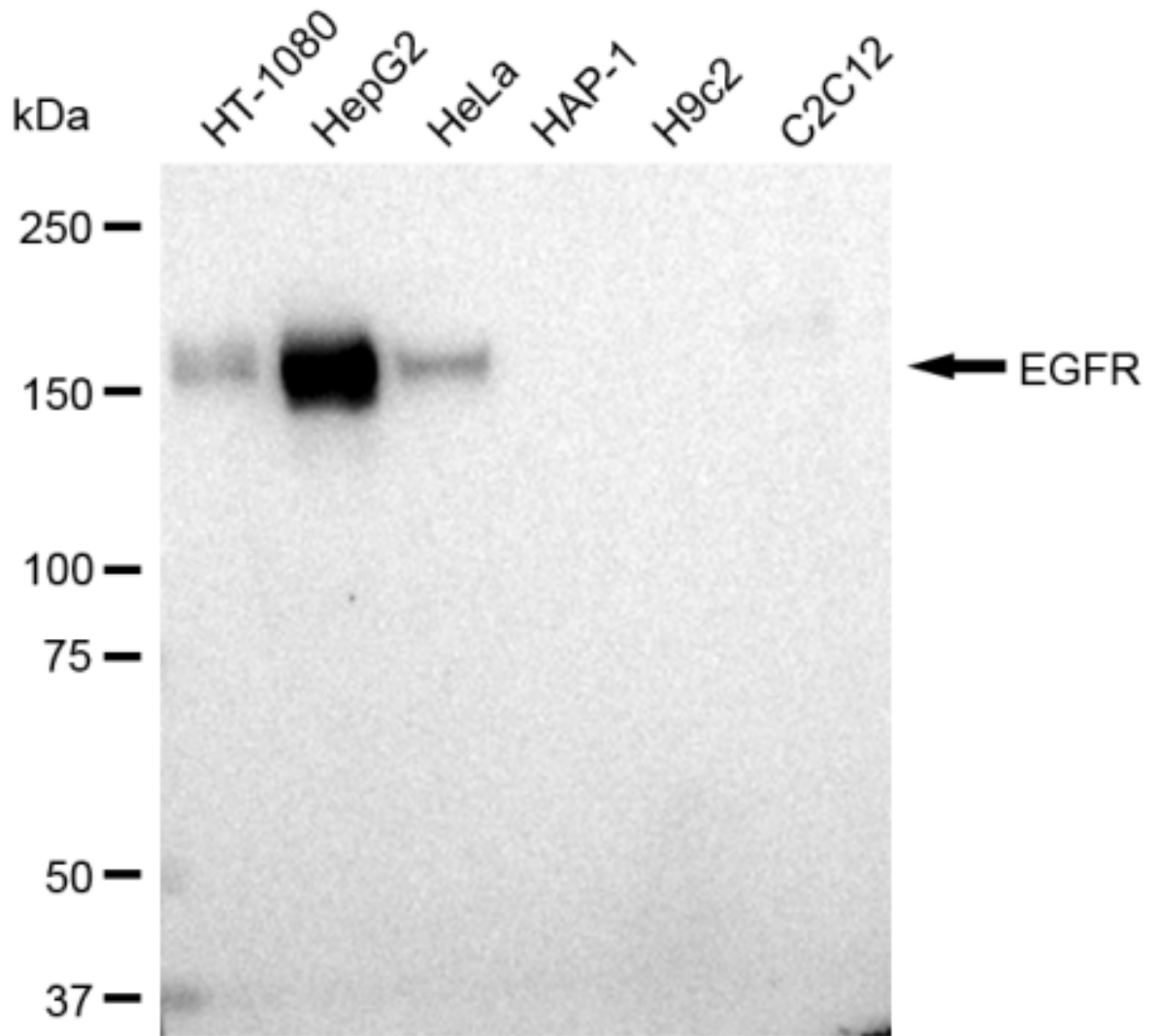
Western Blotting (WB): 1:1,000-1:5,000 Immunocytochemistry (IC): 1:1,000

Protocols

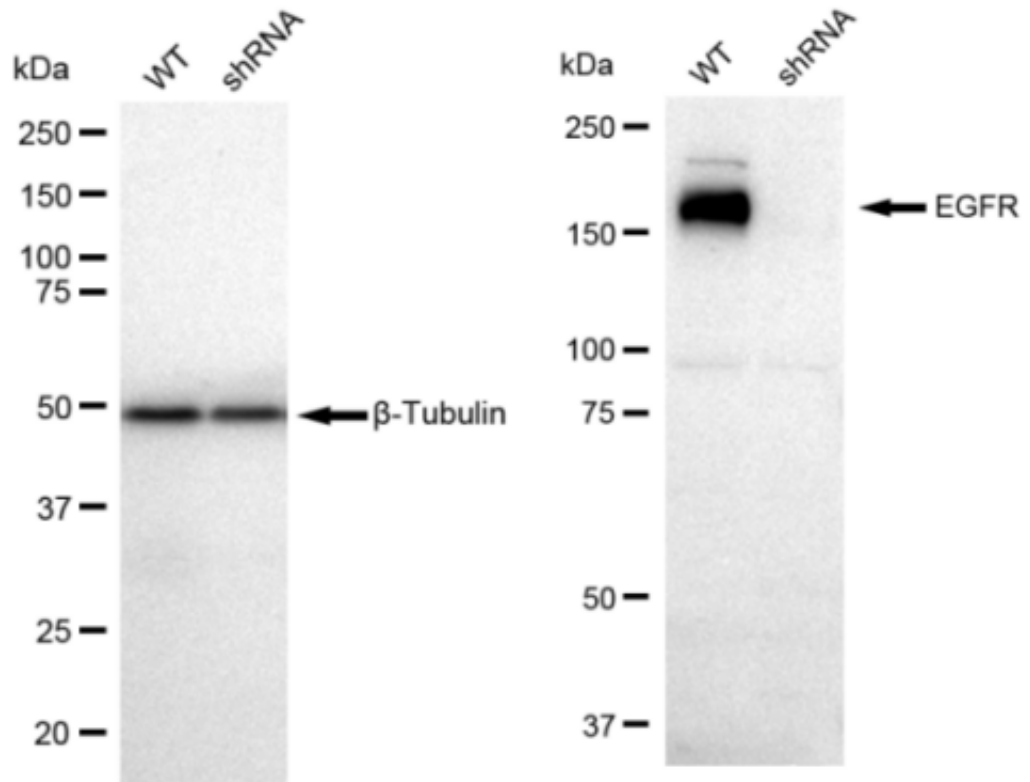
For general and specific antibody protocols please visit our website. Read all instructions before using this product.



Immunocytochemical staining of HepG2 cells with EGFR antibody 1:1,000. Nuclei were stained blue with DAPI; EGFR was stained magenta with Alexa Fluor® 647. Images were taken using Leica stellaris 5. Protein abundance based on laser Intensity and smart gain: Medium. Scale bar: 20 µm.



Western blotting analysis using anti-EGFR antibody 1:5,000 and HRP-conjugated goat anti-rabbit secondary antibody 1:20,000 respectively. Image was developed using FeQ™ ECL Substrate Kit .



Western blotting analysis using anti-EGFR antibody 1:5,000 and HRP-conjugated goat anti-rabbit secondary antibody 1:50,000 respectively. Image was developed using FeQ™ ECL Substrate Kit .