



SunLong Biotech Co.,LTD  
Tel: 0086-571- 56623320 Fax:0086-571- 56623318  
E-mail:sales@sunlongbiotech.com  
www.sunlongbiotech.com

## [KD-Validated] Anti-Ephrin A1 Rabbit Monoclonal Antibody

Cat No.: KD-10334

### Aliases:

EFNA1; Ephrin A1; LERK1; Ephrin-A1; TNFAIP4; ECKLG; EPLG1; GMAN ; Gastric Cancer Metastasis Associated Long Noncoding RNA; EPH-Related Receptor Tyrosine Kinase Ligand 1; Tumor Necrosis Factor Alpha-Induced Protein 4; Immediate Early Response Protein B61; TNF Alpha-Induced Protein 4; LERK-1; Tumor Necrosis Factor, Alpha-Induced Protein 4; Eph-Related Receptor Tyrosine Kinase Ligand 1; Epididymis Secretory Sperm Binding Protein; Ligand Of Eph-Related Kinase 1; EFL1; B61

### Background:

UniProt Entry: [P20827](#);NCBI Gene Entry: [1942](#)

### Application Information

Molecular Weight: Predicted, 24 kDa, observed, 24 kDa Clonality: Rabbit monoclonal antibody Clone ID: 23GB5265 Species Reactivity: Human Applications Used: Western Blotting (WB)

### Immunogen

A synthesized peptide derived from human Ephrin A1

### Isotype

Rabbit IgG

### Storage Buffer

Supplied in PBS (pH 7.4) containing 50% glycerol, and 0.02% sodium azide.

**Storage**

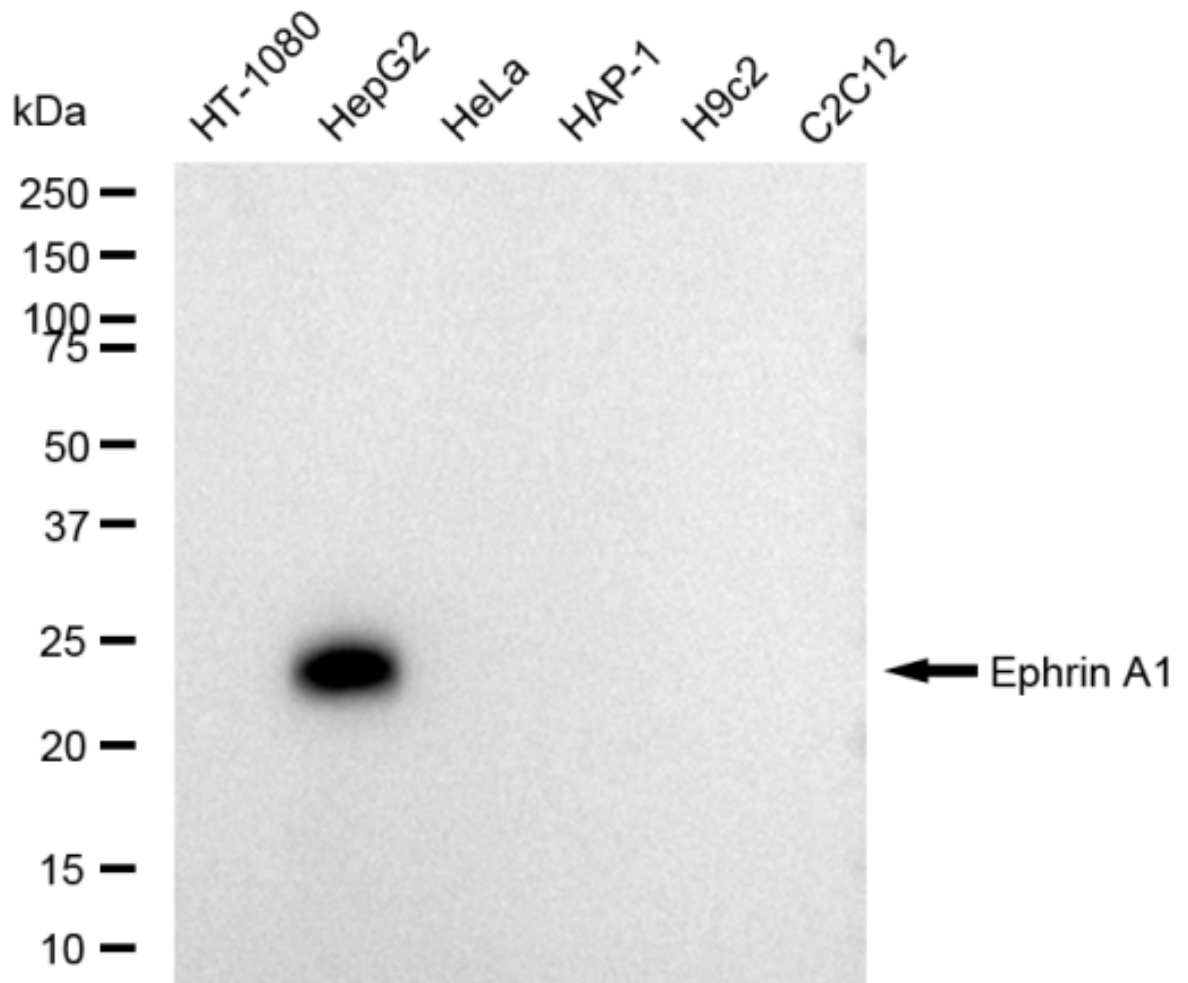
Store at -20 °C for one year.

**Recommended Dilutions**

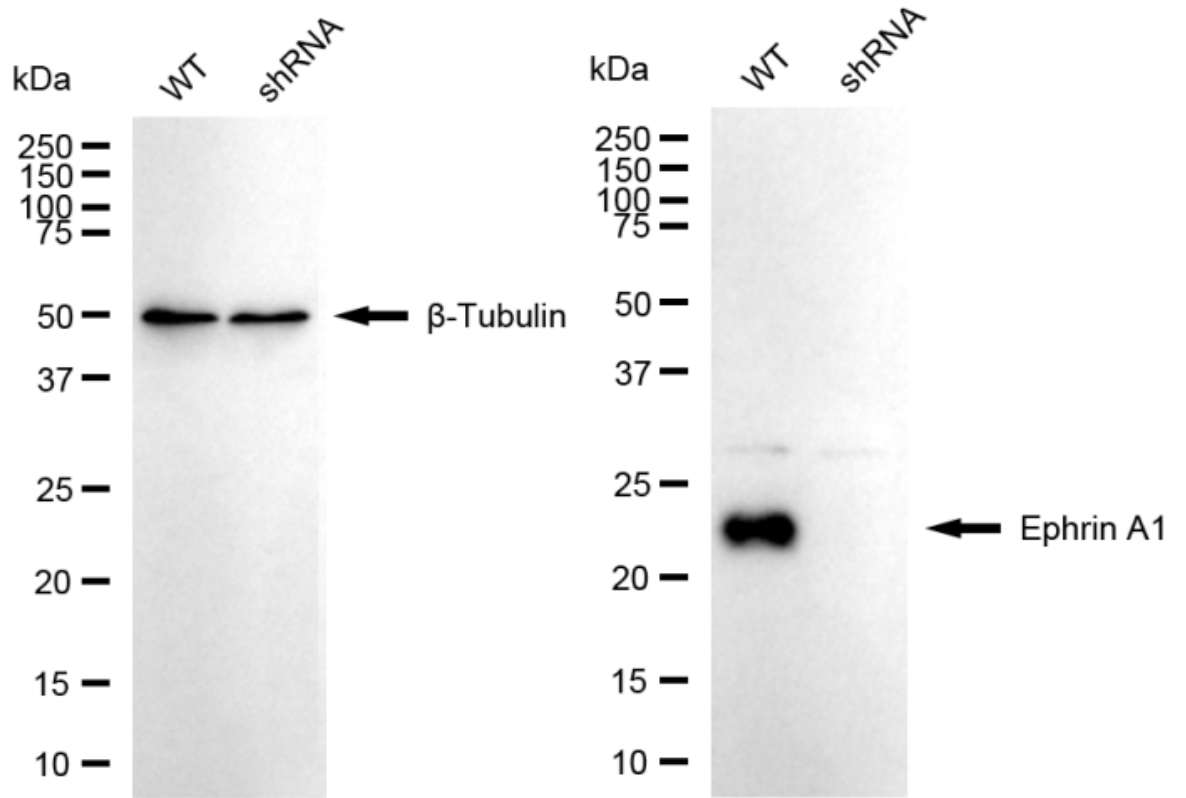
Western Blotting (WB): 1:1,000-1:5,000

**Protocols**

For general and specific antibody protocols please visit our website. Read all instructions before using this product.



Western blotting analysis using anti-Ephrin A1 antibody 1:5,000 and HRP-conjugated goat anti-rabbit secondary antibody 1:20,000 respectively. Image was developed using FeQ™ ECL Substrate Kit .



Western blotting analysis using anti-Ephrin A1 antibody 1:5,000 and HRP-conjugated goat anti-rabbit secondary antibody 1:20,000 respectively. Image was developed using FeQ™ ECL Substrate Kit .