



SunLong Biotech Co.,LTD
Tel: 0086-571- 56623320 Fax:0086-571- 56623318
E-mail:sales@sunlongbiotech.com
www.sunlongbiotech.com

[KD-Validated] Anti-Early endosome antigen 1 Rabbit Monoclonal Antibody

Cat No.: KD-10331

Aliases:

EEA1; Early Endosome Antigen 1; ZFYVE2; Zinc Finger FYVE Domain-Containing Protein; Endosome-Associated Protein P162; Early Endosome Antigen 1, 162kD; Early Endosome-Associated Protein; MSTP105; MST105

Background:

UniProt Entry: [Q15075](#);NCBI Gene Entry: [8411](#)

Application Information

Molecular Weight: Predicted, 162 kDa, observed, 148 kDa Clonality: Rabbit monoclonal antibody Clone ID: 23GB5260 Species Reactivity: Human, Mouse, Rat Applications Tested: Western Blotting (WB), Flow Cytometry (FCM)

Immunogen

A synthesized peptide derived from human EEA1

Isotype

Rabbit IgG

Storage Buffer

Supplied in PBS (pH 7.4) containing 50% glycerol, and 0.02% sodium azide.

Storage

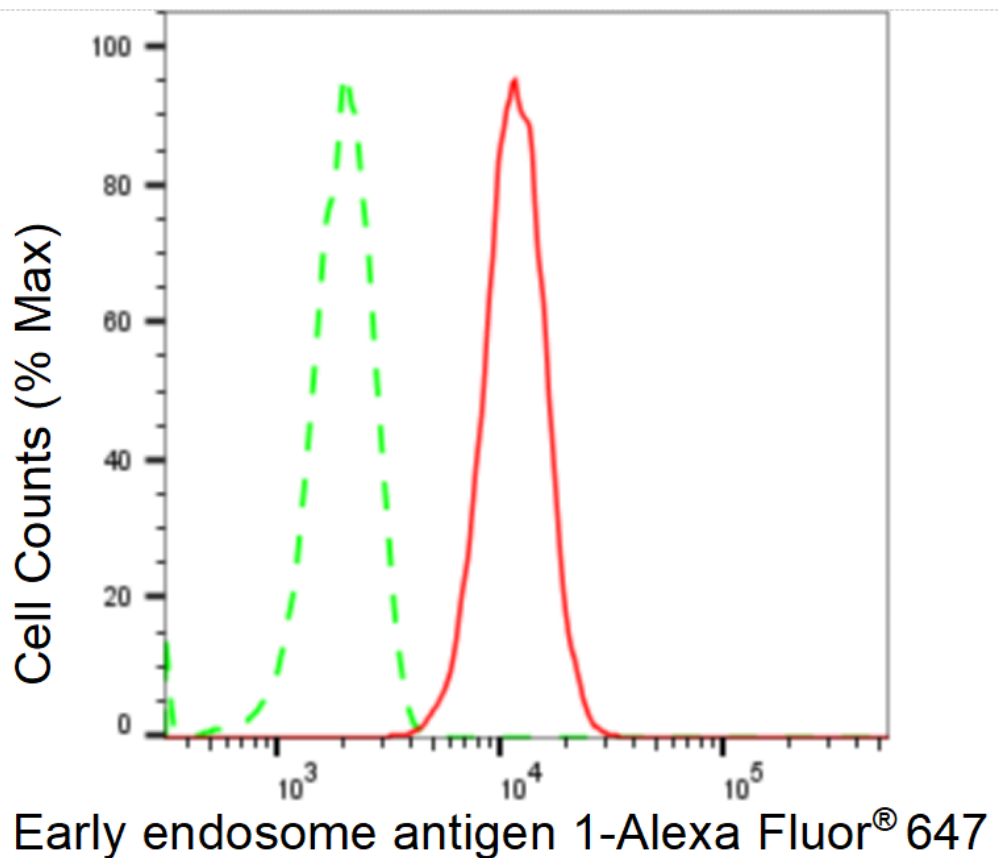
Store at -20 °C for one year.

Recommended Dilutions

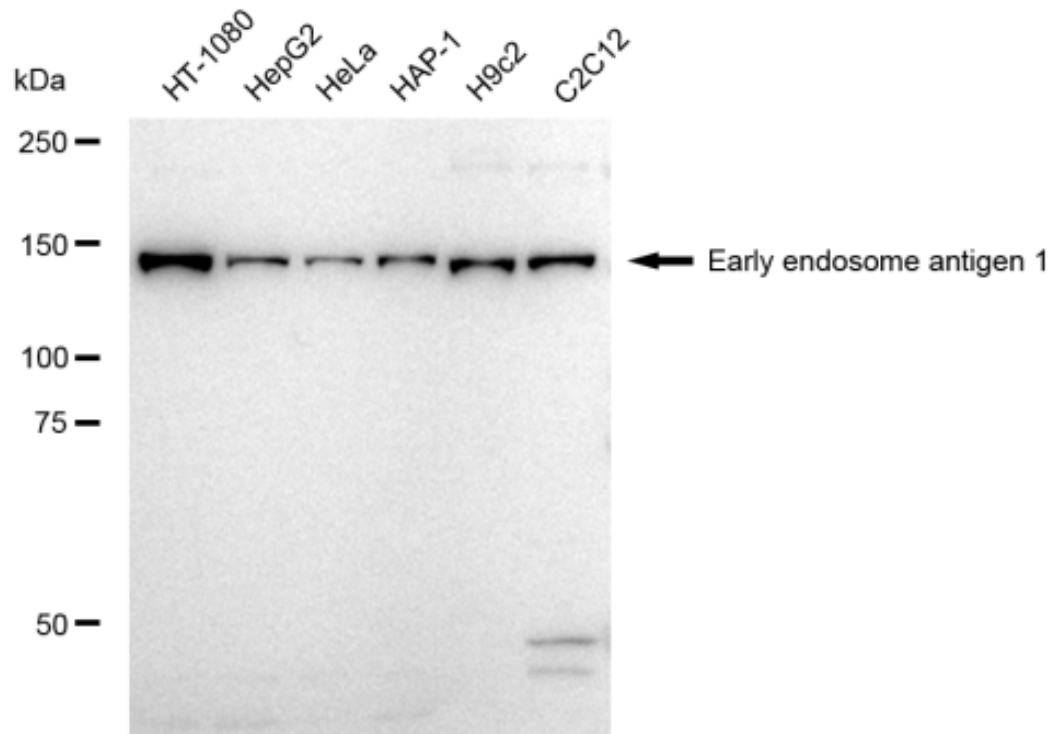
Western Blotting (WB): 1:1,000-1:5,000 Flow Cytometry (FCM): 1:2,000

Protocols

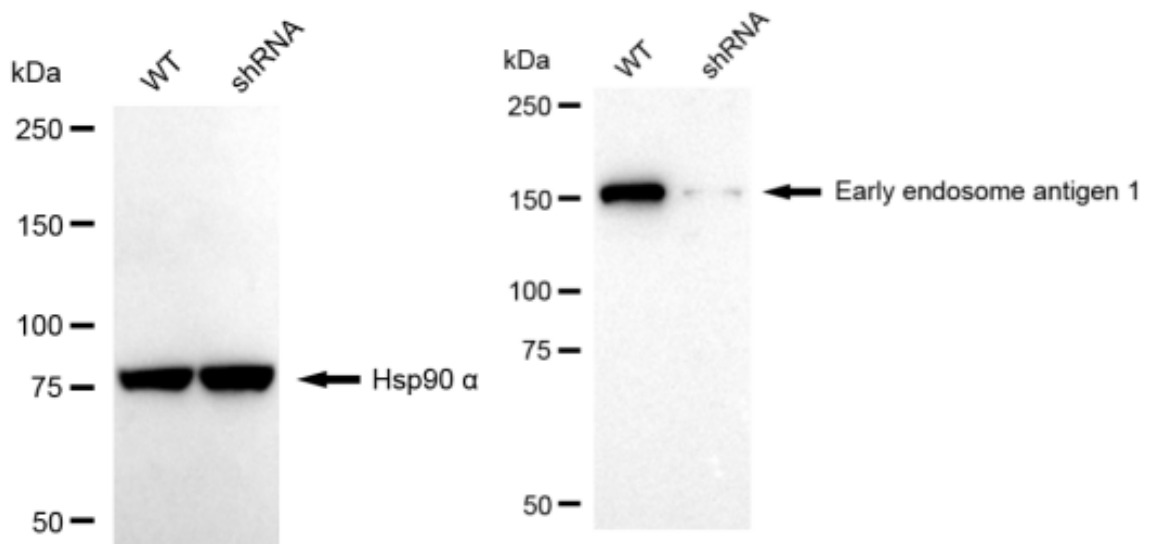
For general and specific antibody protocols please visit our website. Read all instructions before using this product.



Flow cytometric analysis of Early endosome antigen 1 expression in HT-1080 cells using Early endosome antigen 1 antibody 1:2,000. Green, isotype control; red, Early endosome antigen 1.



Western blotting analysis using anti-Early endosome antigen 1 antibody 1:5,000 and HRP-conjugated goat anti-rabbit secondary antibody 1:20,000 respectively. Image was developed using FeQ™ ECL Substrate Kit .



Western blotting analysis using anti-Early endosome antigen 1 antibody 1:5,000 and HRP-conjugated goat anti-rabbit secondary antibody 1:20,000 respectively. Image was developed using FeQ™ ECL Substrate Kit .