



SunLong Biotech Co.,LTD  
Tel: 0086-571- 56623320 Fax:0086-571- 56623318  
E-mail:sales@sunlongbiotech.com  
www.sunlongbiotech.com

## **[KD-Validated] Anti-E2F transcription factor 1 Rabbit Monoclonal Antibody**

Cat No.: KD-10329

### **Aliases:**

E2F1; E2F Transcription Factor 1; RBBP3; RBP3; Retinoblastoma-Binding Protein 3 (E2F-Like); Retinoblastoma-Associated Protein 1; Retinoblastoma-Binding Protein 3; Transcription Factor E2F1; PRB-Binding Protein E2F-1; RBAP-1; RBBP-3; E2F-1; PBR3; RBAP1

### **Background:**

UniProt Entry: [Q01094](#);NCBI Gene Entry: [1869](#)

### **Application Information**

Molecular Weight: Predicted, 47 kDa, observed, 65 kDa Clonality: Rabbit monoclonal antibody Clone ID: 23GB1505 Species Reactivity: Human, Mouse, Rat Applications Tested: Western Blotting (WB), Flow Cytometry (FCM), Immunocytochemistry (IC)

### **Immunogen**

A synthesized peptide derived from human E2F1

### **Isotype**

Rabbit IgG

### **Storage Buffer**

Supplied in PBS (pH 7.4) containing 50% glycerol, and 0.02% sodium azide.

### Storage

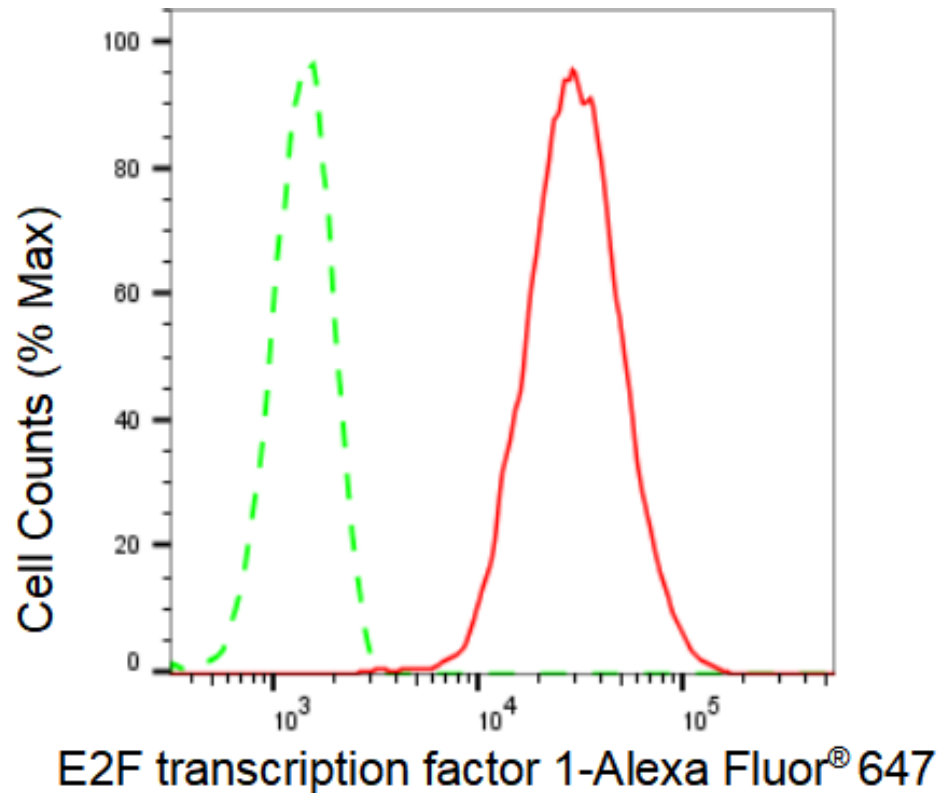
Store at -20 °C for one year.

### Recommended Dilutions

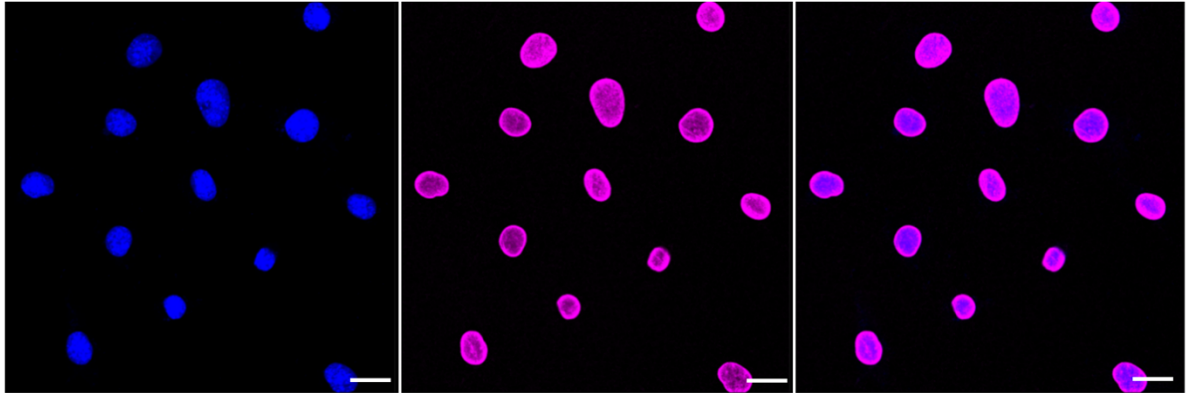
Western Blotting (WB): 1:1,000-1:5,000 Flow Cytometry (FCM): 1:2,000  
Immunocytochemistry (IC): 1:1,000

### Protocols

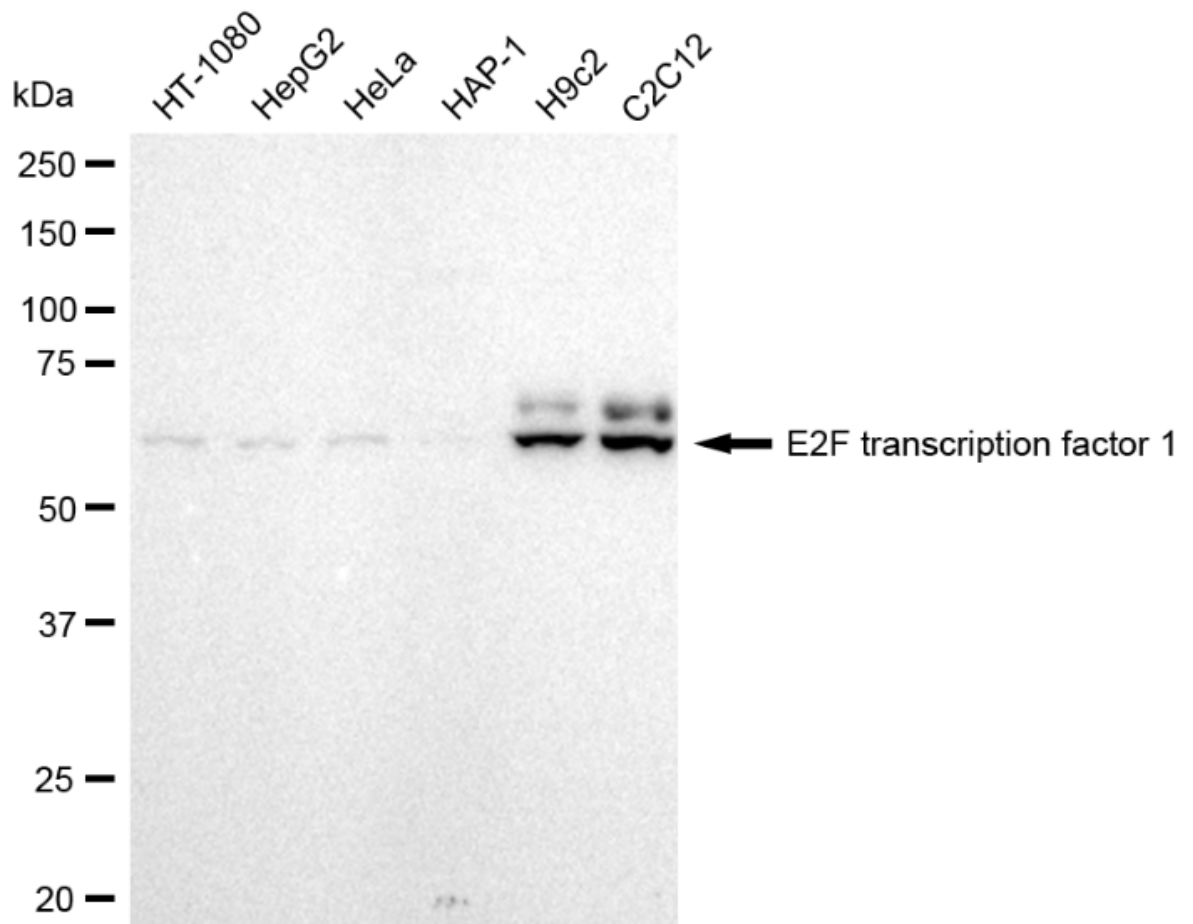
For general and specific antibody protocols please visit our website. Read all instructions before using this product.



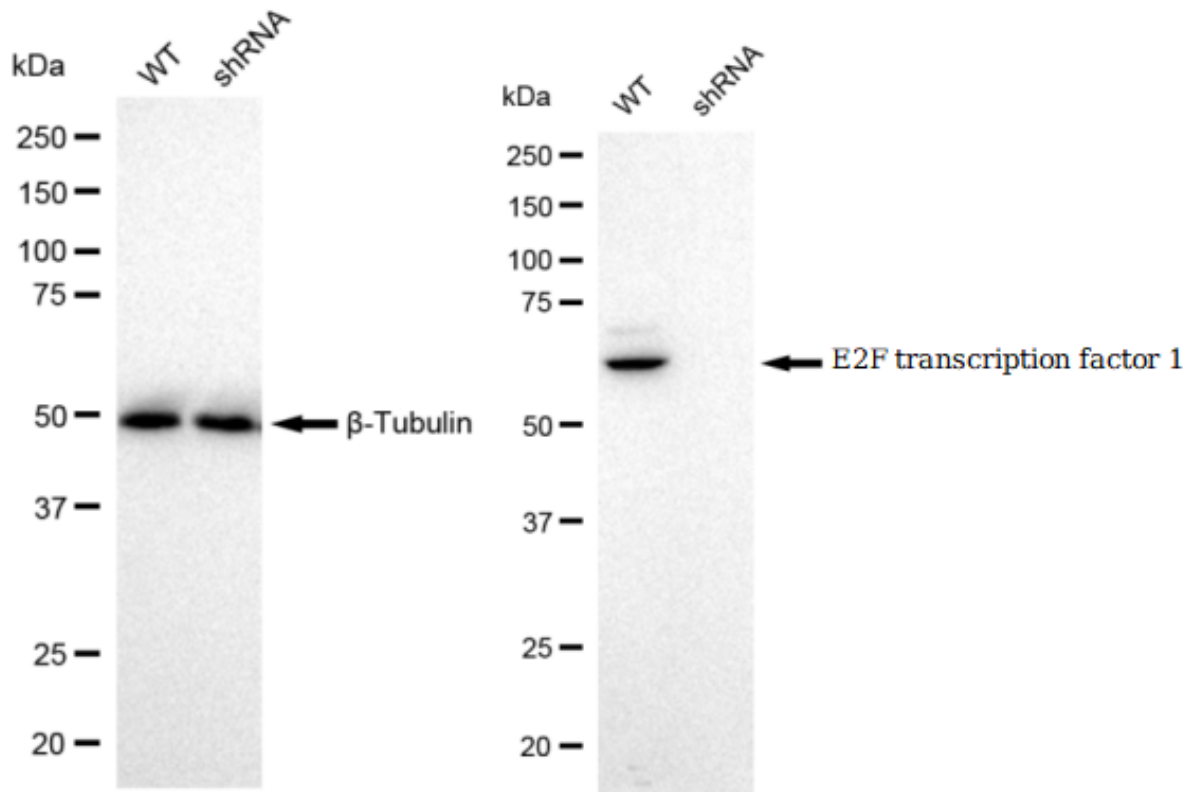
Flow cytometric analysis of E2F transcription factor 1 expression in C2C12 cells using E2F transcription factor 1 antibody 1:2,000. Green, isotype control; red, E2F transcription factor 1.



Immunocytochemical staining of C2C12 cells with E2F transcription factor 1 antibody 1:1,000. Nuclei were stained blue with DAPI; E2F transcription factor 1 was stained magenta with Alexa Fluor® 647. Images were taken using Leica stellaris 5. Protein abundance based on laser Intensity and smart gain: High. Scale bar: 20  $\mu$ m.



Western blotting analysis using anti-E2F transcription factor 1 antibody 1:5,000 and HRP-conjugated goat anti-rabbit secondary antibody 1:20,000 respectively. Image was developed using FeQ™ ECL Substrate Kit .



Western blotting analysis using anti-E2F transcription factor 1 antibody 1:5,000 and HRP-conjugated goat anti-rabbit secondary antibody 1:20,000 respectively. Image was developed using FeQ™ ECL Substrate Kit .