



SunLong Biotech Co.,LTD
Tel: 0086-571- 56623320 Fax:0086-571- 56623318
E-mail:sales@sunlongbiotech.com
www.sunlongbiotech.com

[KD-Validated] Anti-DYNLL1 Rabbit Monoclonal Antibody

Cat No.: KD-10328

Aliases:

DYNLL1; Dynein Light Chain LC8-Type 1; DLC1; DLC8; PIN; DNCL1; LC8; Protein Inhibitor Of Neuronal Nitric Oxide Synthase; Dynein, Cytoplasmic, Light Polypeptide 1; Dynein Light Chain 1, Cytoplasmic; 8 KDa Dynein Light Chain; DNCLC1; Hdcl1; HDLC1; Cytoplasmic Dynein Light Polypeptide; LC8a

Background:

UniProt Entry: [P63167](#);NCBI Gene Entry: [8655](#)

Application Information

Molecular Weight: Predicted, 10 kDa, observed, 10 kDa Clonality: Rabbit monoclonal antibody Clone ID: 23GB5245 Species Reactivity: Human, Mouse, Rat Applications Tested: Western Blotting (WB), Flow Cytometry (FCM)

Immunogen

A synthesized peptide derived from human DYNLL1

Isotype

Rabbit IgG

Storage Buffer

Supplied in PBS (pH 7.4) containing 50% glycerol, and 0.02% sodium azide.

Storage

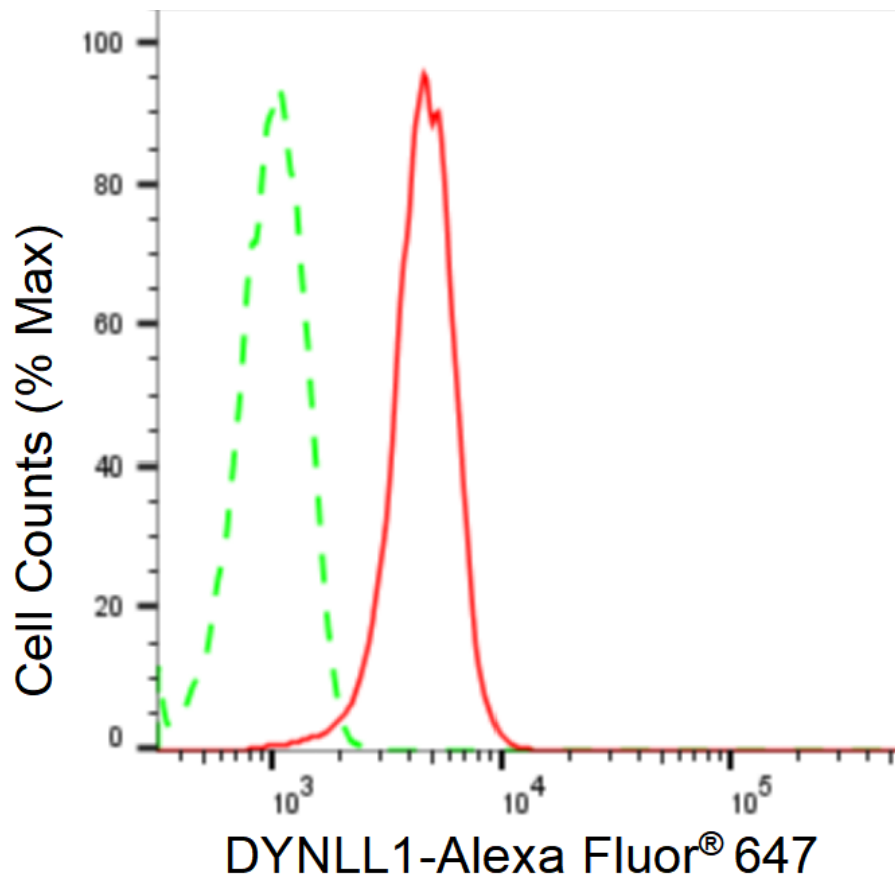
Store at -20 °C for one year.

Recommended Dilutions

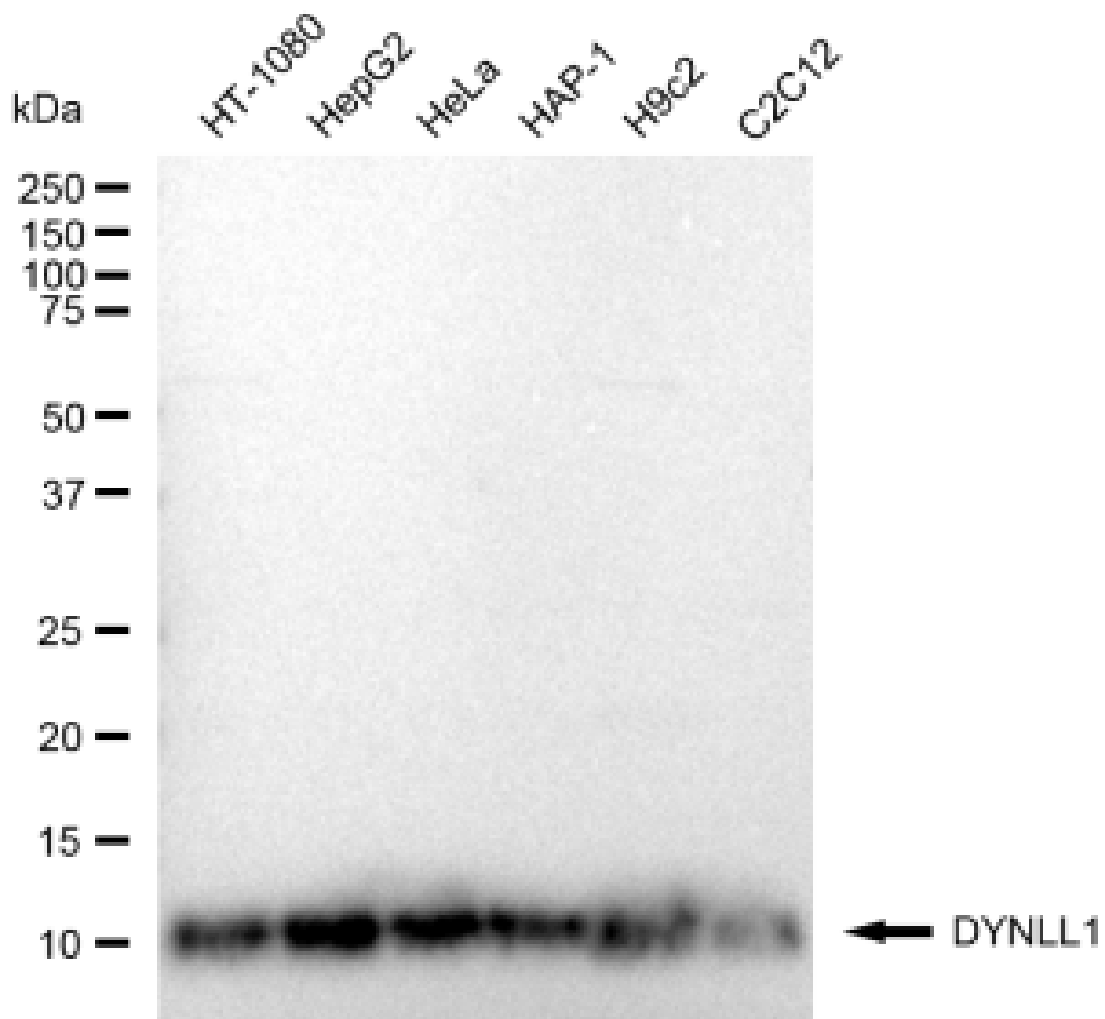
Western Blotting (WB): 1:1,000-1:5,000 Flow Cytometry (FCM): 1:2,000

Protocols

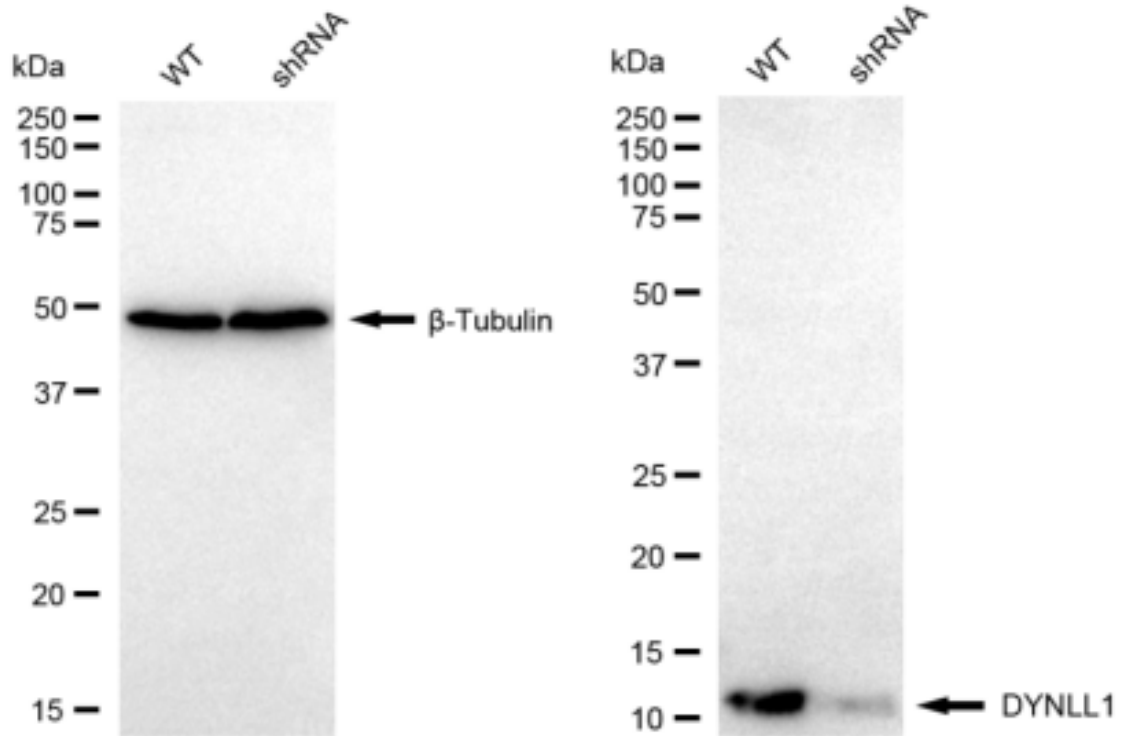
For general and specific antibody protocols please visit our website. Read all instructions before using this product.



Flow cytometric analysis of DYNLL1 expression in HepG2 cells using DYNLL1 antibody 1:2,000. Green, isotype control; red, DYNLL1.



Western blotting analysis using anti-DYNLL1 antibody 1:5,000 and HRP-conjugated goat anti-rabbit secondary antibody 1:20,000 respectively. Image was developed using FeQ™ ECL Substrate Kit .



Western blotting analysis using anti-DYNLL1 antibody 1:5,000 and HRP-conjugated goat anti-rabbit secondary antibody 1:20,000 respectively. Image was developed using FeQ™ ECL Substrate Kit .