



SunLong Biotech Co.,LTD  
Tel: 0086-571- 56623320 Fax:0086-571- 56623318  
E-mail:sales@sunlongbiotech.com  
www.sunlongbiotech.com

## [KD-Validated] Anti-Desmoplakin Rabbit Monoclonal Antibody

Cat No.: KD-10321

### Aliases:

DSP; Desmoplakin; 250/210 KDa Paraneoplastic Pemphigus Antigen; KPPS2; PPKS2; DPII; DPI; DP; Desmoplakin (DPI, DPII); DCWHKTA

### Background:

UniProt Entry: [P15924](#);NCBI Gene Entry: [1832](#)

### Application Information

Molecular Weight: Predicted, 332 kDa, observed, 270 kDa Clonality: Rabbit monoclonal antibody Clone ID: 23GB5220 Species Reactivity: Human Applications Used: Western Blotting (WB), Flow Cytometry (FCM)

### Immunogen

A synthesized peptide derived from human Desmoplakin

### Isotype

Rabbit IgG

### Storage Buffer

Supplied in PBS (pH 7.4) containing 50% glycerol, and 0.02% sodium azide.

### Storage

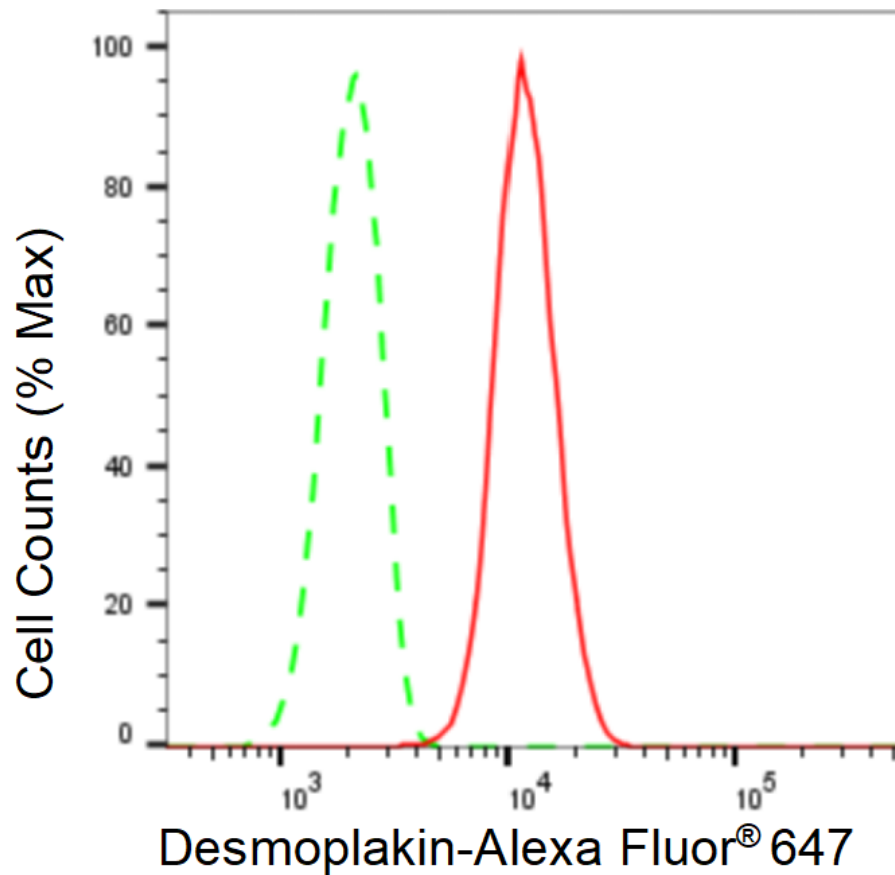
Store at -20 °C for one year.

#### Recommended Dilutions

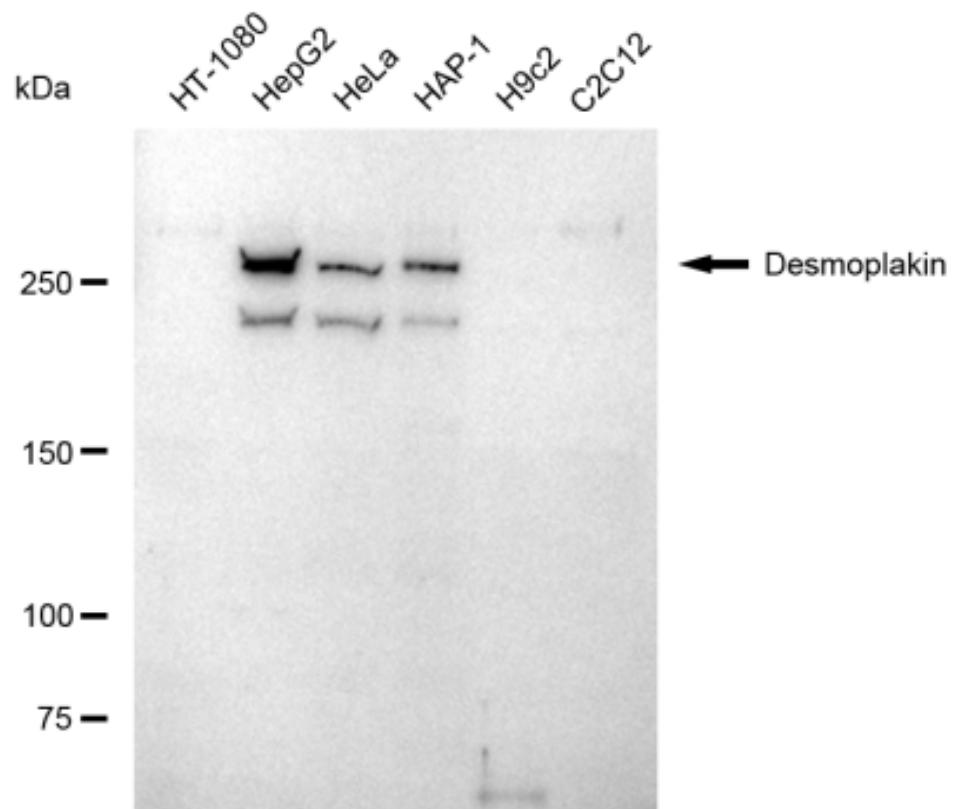
Western Blotting (WB): 1:1,000-1:5,000 Flow Cytometry (FCM): 1:2,000

#### Protocols

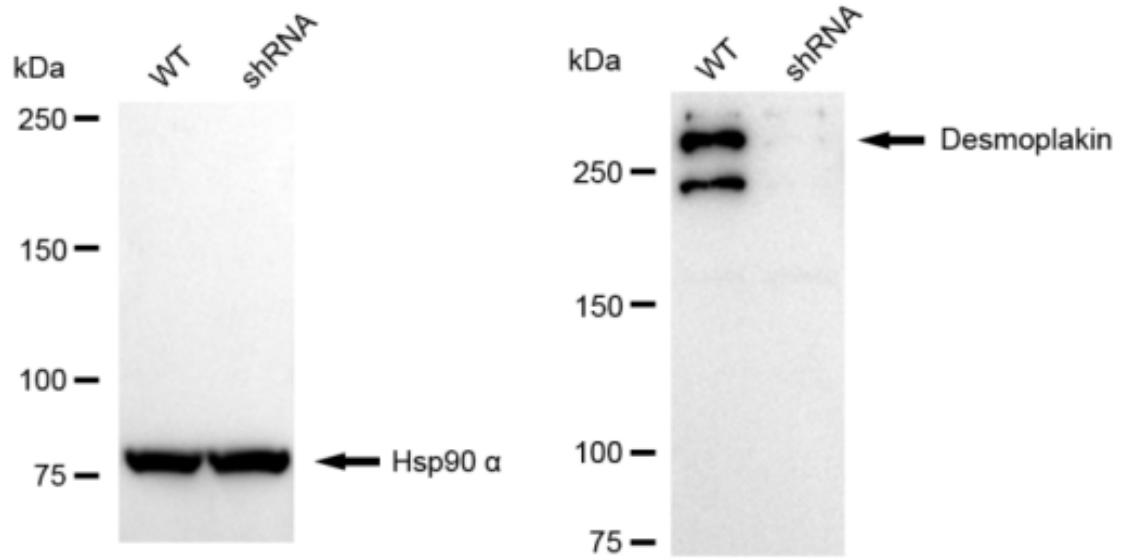
For general and specific antibody protocols please visit our website. Read all instructions before using this product.



Flow cytometric analysis of Desmoplakin expression in HepG2 cells using Desmoplakin antibody 1:2,000. Green, isotype control; red, Desmoplakin.



Western blotting analysis using anti-Desmoplakin antibody 1:5,000 and HRP-conjugated goat anti-rabbit secondary antibody 1:20,000 respectively. Image was developed using FeQ™ ECL Substrate Kit .



Western blotting analysis using anti-Desmoplakin antibody 1:5,000 and HRP-conjugated goat anti-rabbit secondary antibody 1:20,000 respectively. Image was developed using FeQ™ ECL Substrate Kit .