



SunLong Biotech Co.,LTD
Tel: 0086-571- 56623320 Fax:0086-571- 56623318
E-mail:sales@sunlongbiotech.com
www.sunlongbiotech.com

[KD-Validated] Anti-Drosha ribonuclease III Rabbit Monoclonal Antibody

Cat No.: KD-10318

Aliases:

DROSHA; Drosha Ribonuclease III; RNASE3L; RN3; HSA242976; RNASEN; Drosha, Double-Stranded RNA-Specific Endoribonuclease; Ribonuclease Type III, Nuclear; Ribonuclease 3; EC 3.1.26.3; RNase III; ETOHI2; P241; Putative Protein P241 Which Interacts With Transcription Factor Sp1; Drosha, Ribonuclease Type III; Putative Ribonuclease III; Nuclear RNase III Drosha; Ribonuclease III; Protein Drosha; RANSE3L; Etohi2

Background:

UniProt Entry: [Q9NRR4](#);NCBI Gene Entry: [29102](#)

Application Information

Molecular Weight: Predicted, 159 kDa, observed, 159 kDa Clonality: Rabbit monoclonal antibody Clone ID: 23GB5205 Species Reactivity: Human, Mouse, Rat Applications Tested: Western Blotting (WB), Flow Cytometry (FCM)

Immunogen

A synthesized peptide derived from human Drosha

Isotype

Rabbit IgG

Storage Buffer

Supplied in PBS (pH 7.4) containing 50% glycerol, and 0.02% sodium azide.

Storage

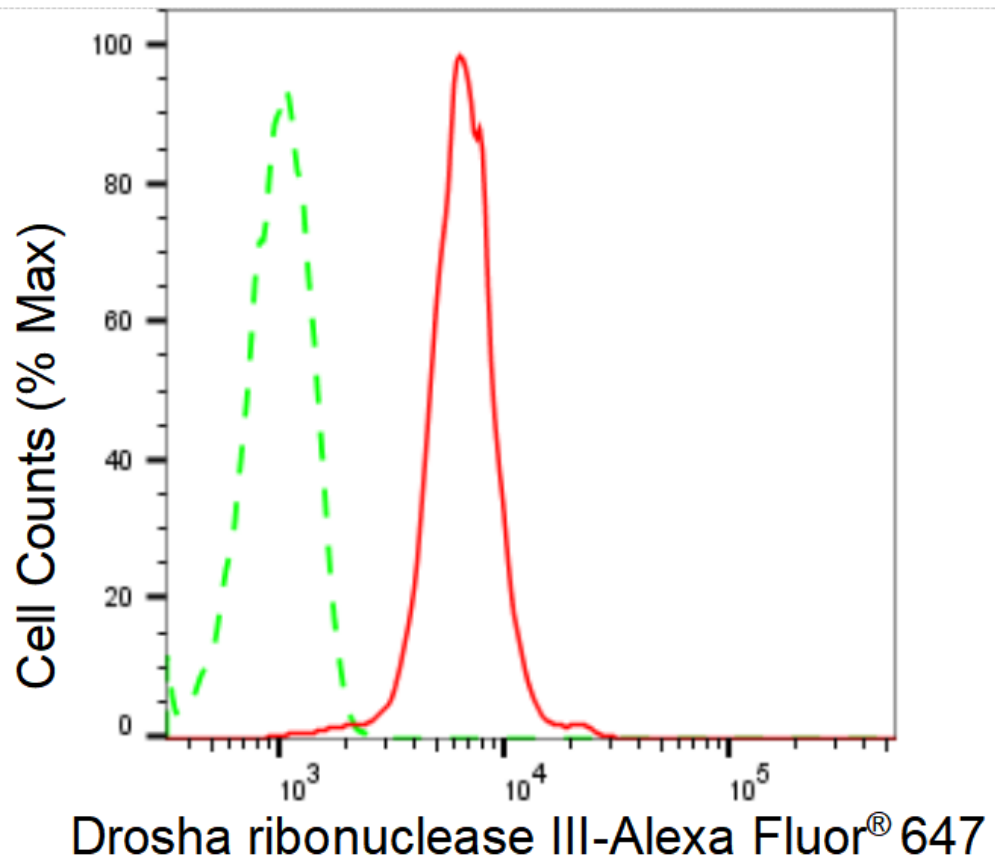
Store at -20 °C for one year.

Recommended Dilutions

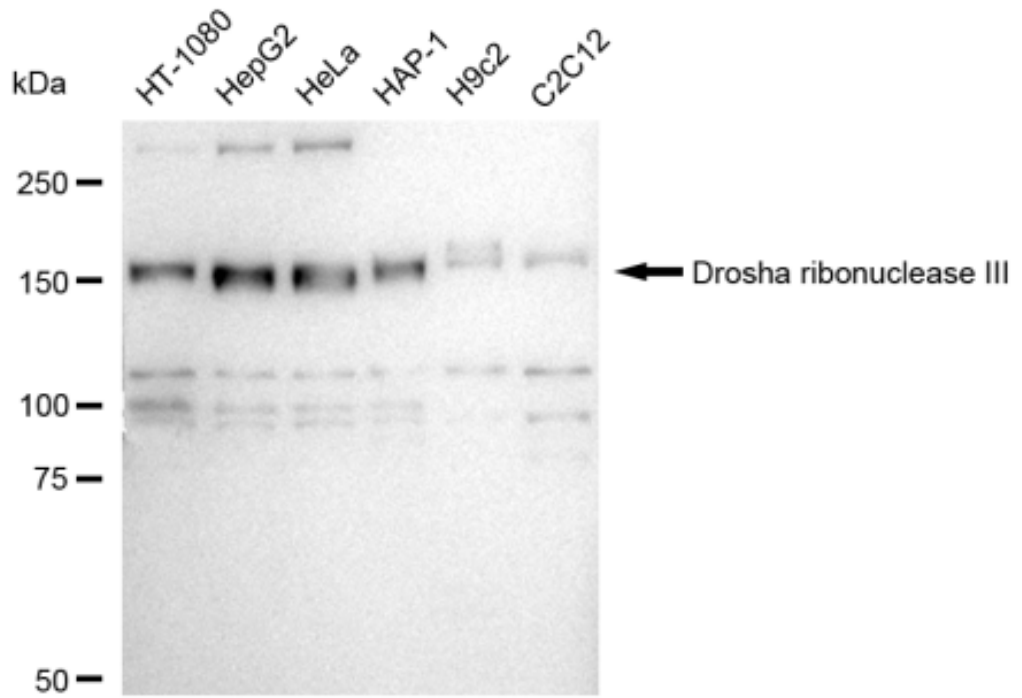
Western Blotting (WB): 1:1,000-1:5,000 Flow Cytometry (FCM): 1:2,000

Protocols

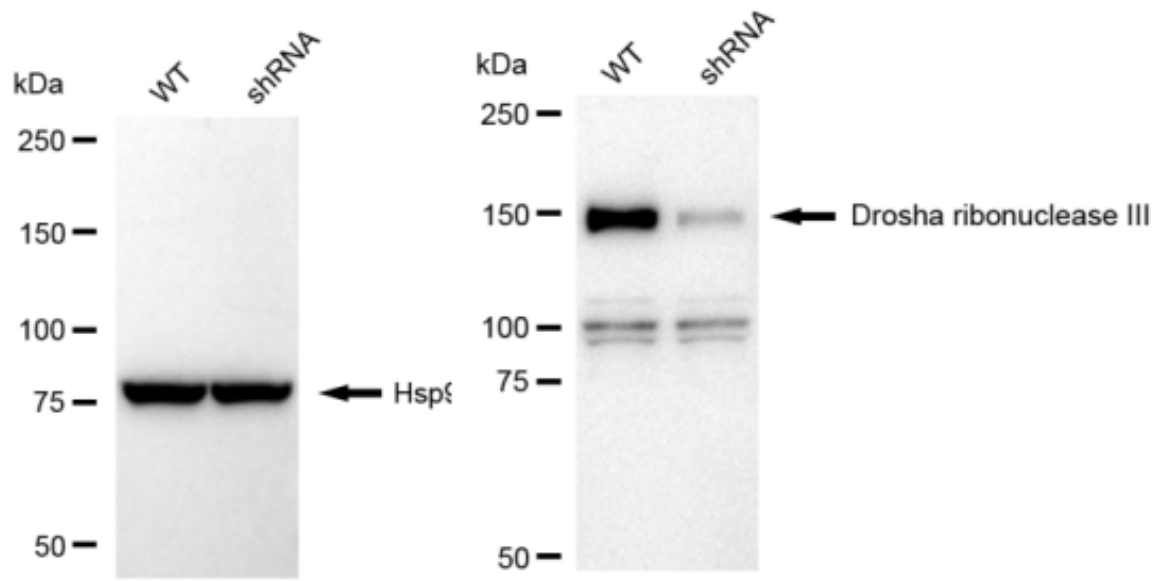
For general and specific antibody protocols please visit our website. Read all instructions before using this product.



Flow cytometric analysis of Droscha ribonuclease III expression in HepG2 cells using Droscha ribonuclease III antibody 1:2,000. Green, isotype control; red, Droscha ribonuclease III.



Western blotting analysis using anti-Drosha ribonuclease III antibody 1:5,000 and HRP-conjugated goat anti-rabbit secondary antibody 1:20,000 respectively. Image was developed using FeQ™ ECL Substrate Kit .



Western blotting analysis using anti-Drosha ribonuclease III antibody 1:5,000 and HRP-conjugated goat anti-rabbit secondary antibody 1:20,000 respectively. Image was developed using FeQ™ ECL Substrate Kit .