



SunLong Biotech Co.,LTD  
Tel: 0086-571- 56623320 Fax:0086-571- 56623318  
E-mail:sales@sunlongbiotech.com  
www.sunlongbiotech.com

## **[KD-Validated] Anti-Dipeptidyl peptidase 3 Rabbit Monoclonal Antibody**

Cat No.: KD-10316

### **Aliases:**

DPP3; Dipeptidyl Peptidase 3; Enkephalinase B; Dipeptidyl Aminopeptidase III; Dipeptidyl Arylamidase III; Dipeptidyl Peptidase III; EC 3.4.14.4; DPP III; Dipeptidylpeptidase III; Dipeptidyl-Peptidase 3; Dipeptidylpeptidase 3; DPPIII

### **Background:**

UniProt Entry: [Q9NY33](#);NCBI Gene Entry: [10072](#)

### **Application Information**

Molecular Weight: Predicted, 83 kDa, observed, 73 kDa Clonality: Rabbit monoclonal antibody Clone ID: 23GB5190 Spncies Reactivity: Human, Rat Applications Tested: Western Blotting (WB), Flow Cytometry (FCM)

### **Immunogen**

A synthesized peptide derived from human DPP3

### **Isotype**

Rabbit IgG

### **Storage Buffer**

Supplied in PBS (pH 7.4) containing 50% glycerol, and 0.02% sodium azide.

### Storage

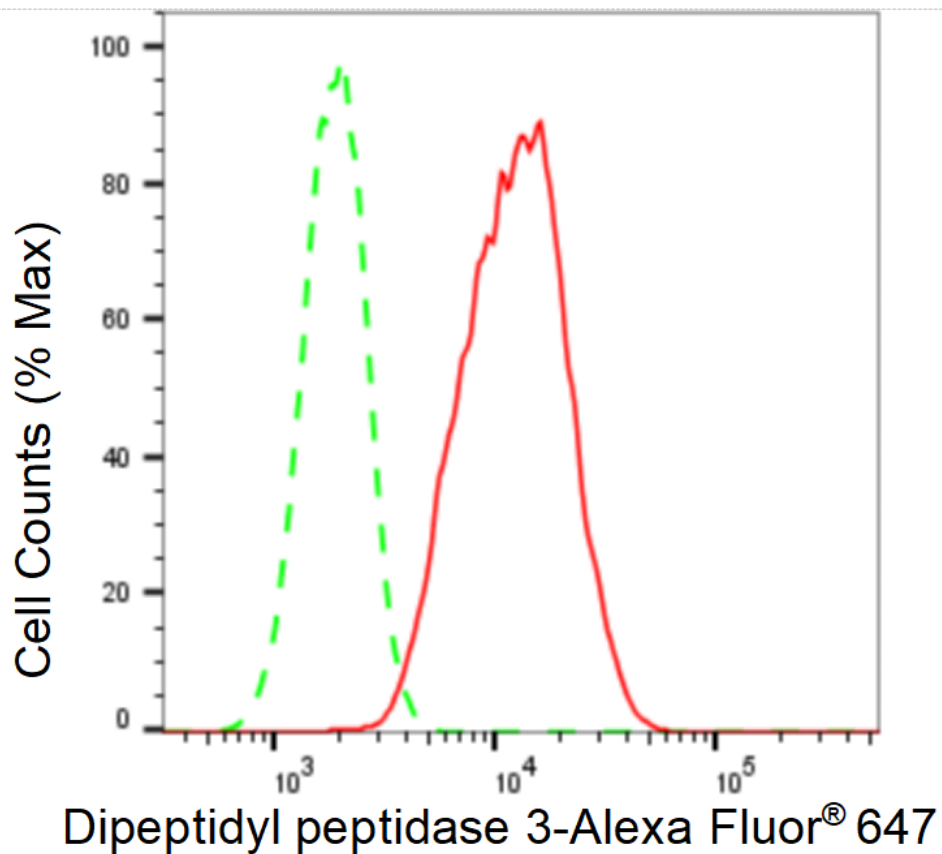
Store at -20 °C for one year.

### Recommended Dilutions

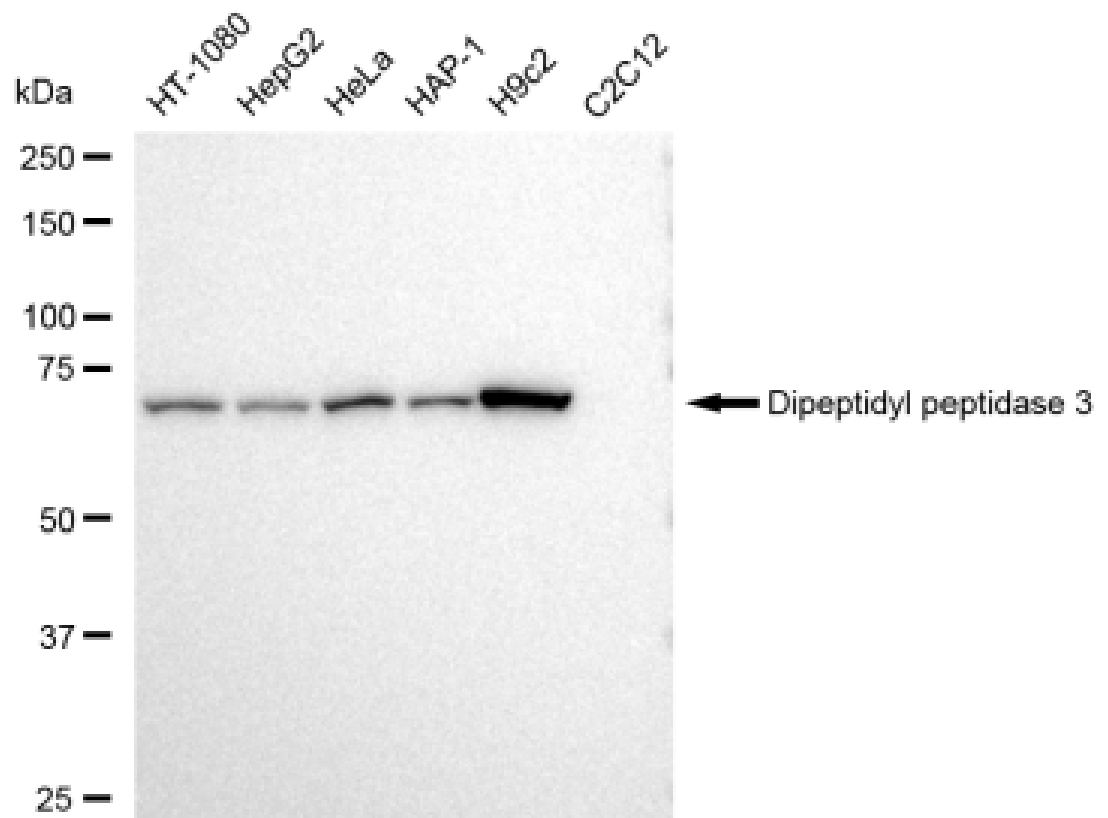
Western Blotting (WB): 1:1,000-1:5,000 Flow Cytometry (FCM): 1:2,000

### Protocols

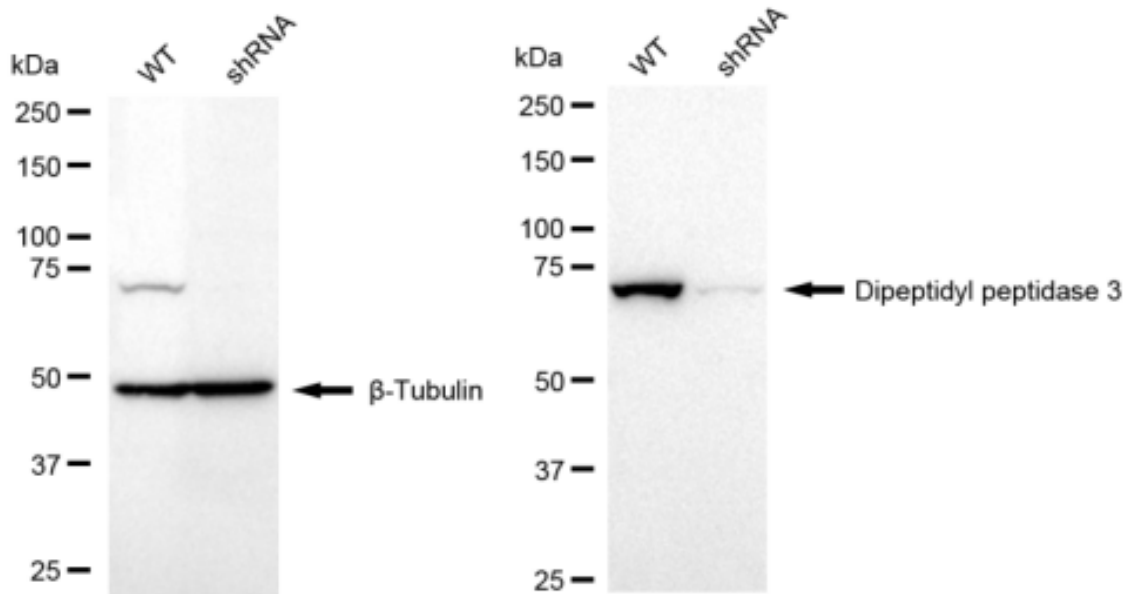
For general and specific antibody protocols please visit our website. Read all instructions before using this product.



Flow cytometric analysis of Dipeptidyl peptidase 3 expression in H9c2 cells using Dipeptidyl peptidase 3 antibody 1:2,000. Green, isotype control; red, Dipeptidyl peptidase 3.



Western blotting analysis using anti-Dipeptidyl peptidase 3 antibody 1:5,000 and HRP-conjugated goat anti-rabbit secondary antibody 1:20,000 respectively. Image was developed using FeQ™ ECL Substrate Kit .



Western blotting analysis using anti-Dipeptidyl peptidase 3 antibody 1:5,000 and HRP-conjugated goat anti-rabbit secondary antibody 1:20,000 respectively. Image was developed using FeQ™ ECL Substrate Kit .