



SunLong Biotech Co.,LTD
Tel: 0086-571- 56623320 Fax:0086-571- 56623318
E-mail:sales@sunlongbiotech.com
www.sunlongbiotech.com

[KD-Validated] Anti-DNAJC12 Rabbit Monoclonal Antibody

Cat No.: KD-10312

Aliases:

DNAJC12; DnaJ Heat Shock Protein Family (Hsp40) Member C12; JDP1; DnaJ (Hsp40) Homolog, Subfamily C, Member 12; DnaJ Homolog Subfamily C Member 12; J Domain-Containing Protein; J Domain Protein; J Domain Containing Protein 1 (JDP1); HPANBH4

Background:

UniProt Entry: [Q9UKB3](#);NCBI Gene Entry: [56521](#)

Application Information

Molecular Weight: Predicted, 23 kDa, observed, 23 kDa Clonality: Rabbit monoclonal antibody Clone ID: 23GB1815 Species Reactivity: Human Applications Used: Western Blotting (WB), Flow Cytometry (FCM), Immunocytochemistry (IC)

Immunogen

A synthesized peptide derived from human DNAJC12

Isotype

Rabbit IgG

Storage Buffer

Supplied in PBS (pH 7.4) containing 50% glycerol, and 0.02% sodium azide.

Storage

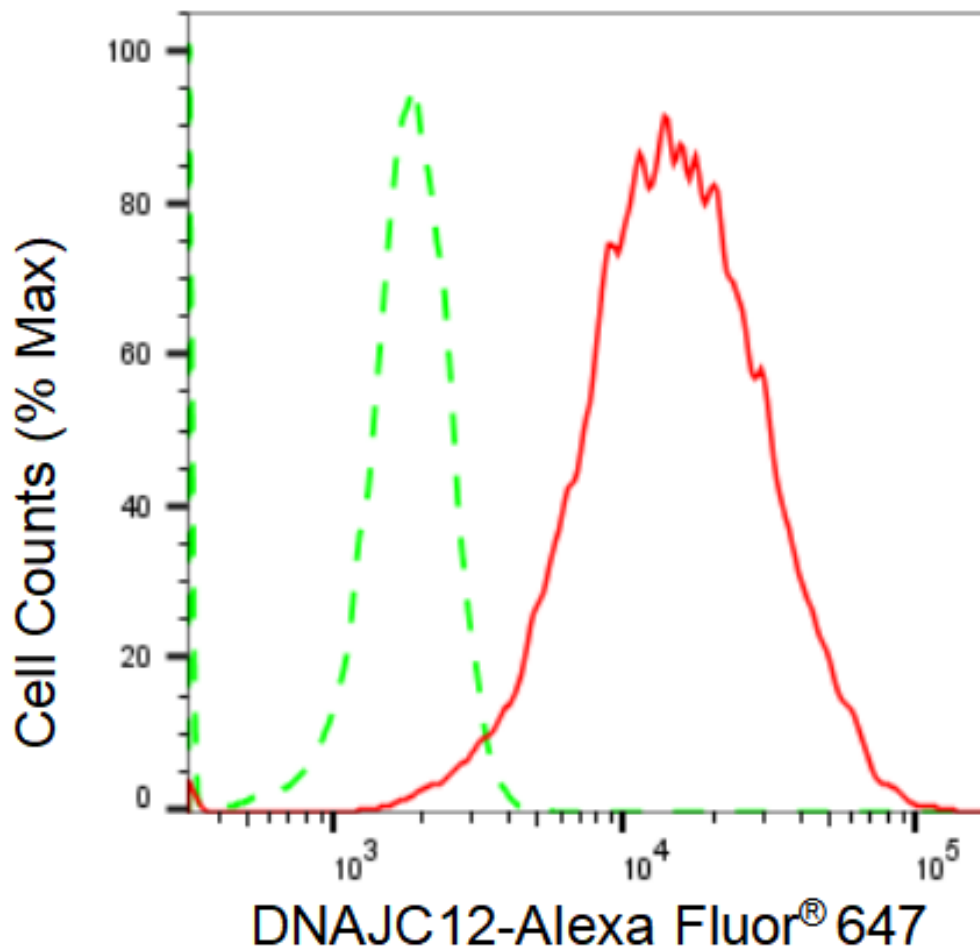
Store at -20 °C for one year.

Recommended Dilutions

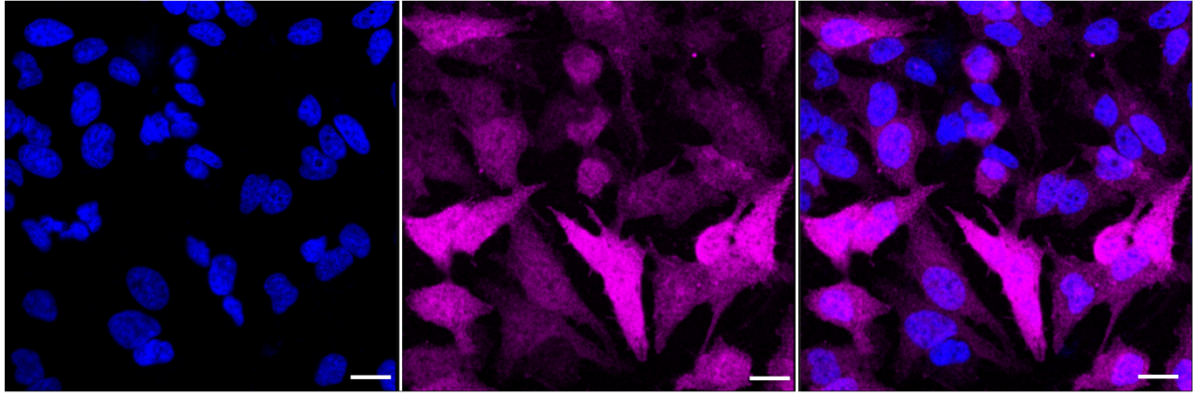
Western Blotting (WB): 1:1,000-1:5,000 Flow Cytometry (FCM): 1:2,000
Immunocytochemistry (IC): 1:1,000

Protocols

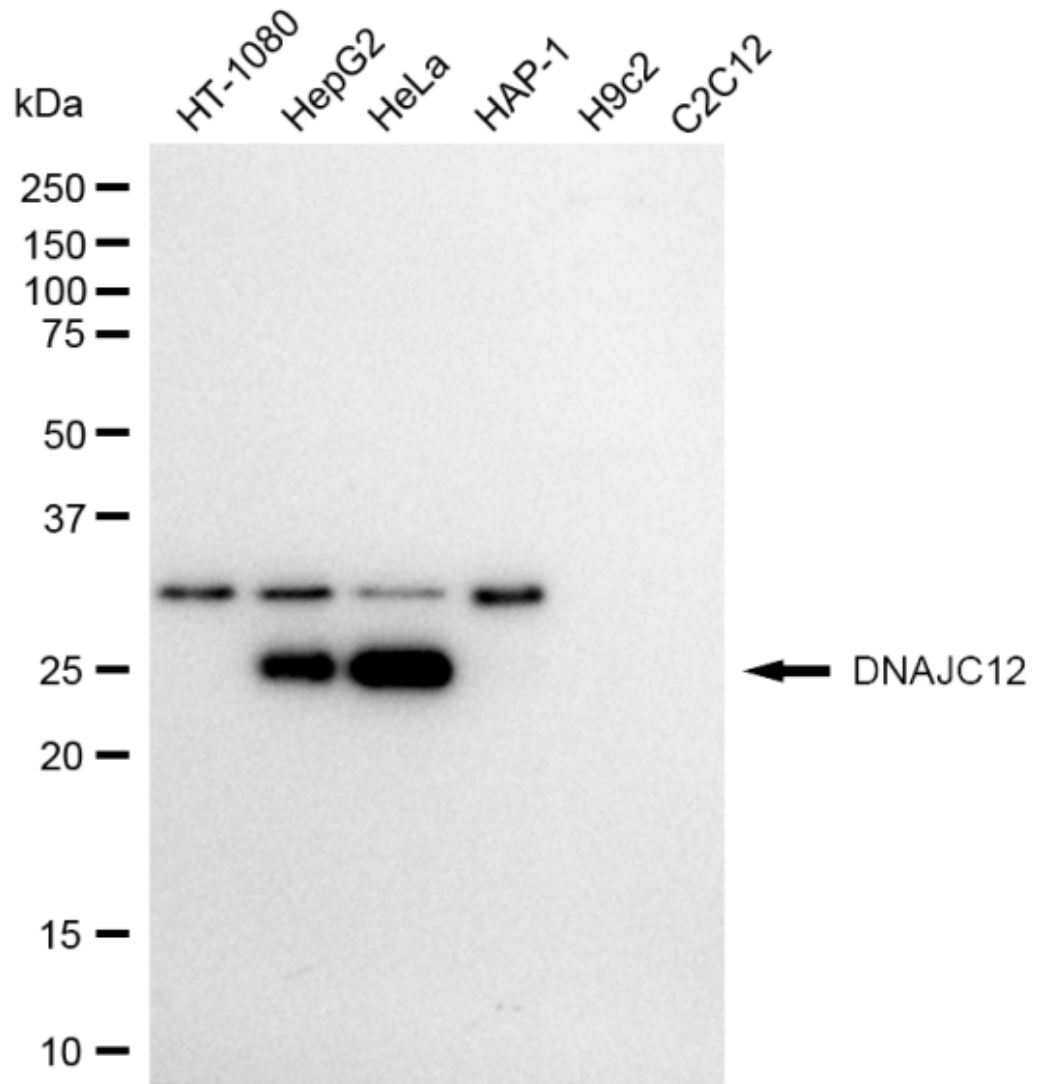
For general and specific antibody protocols please visit our website. Read all instructions before using this product.



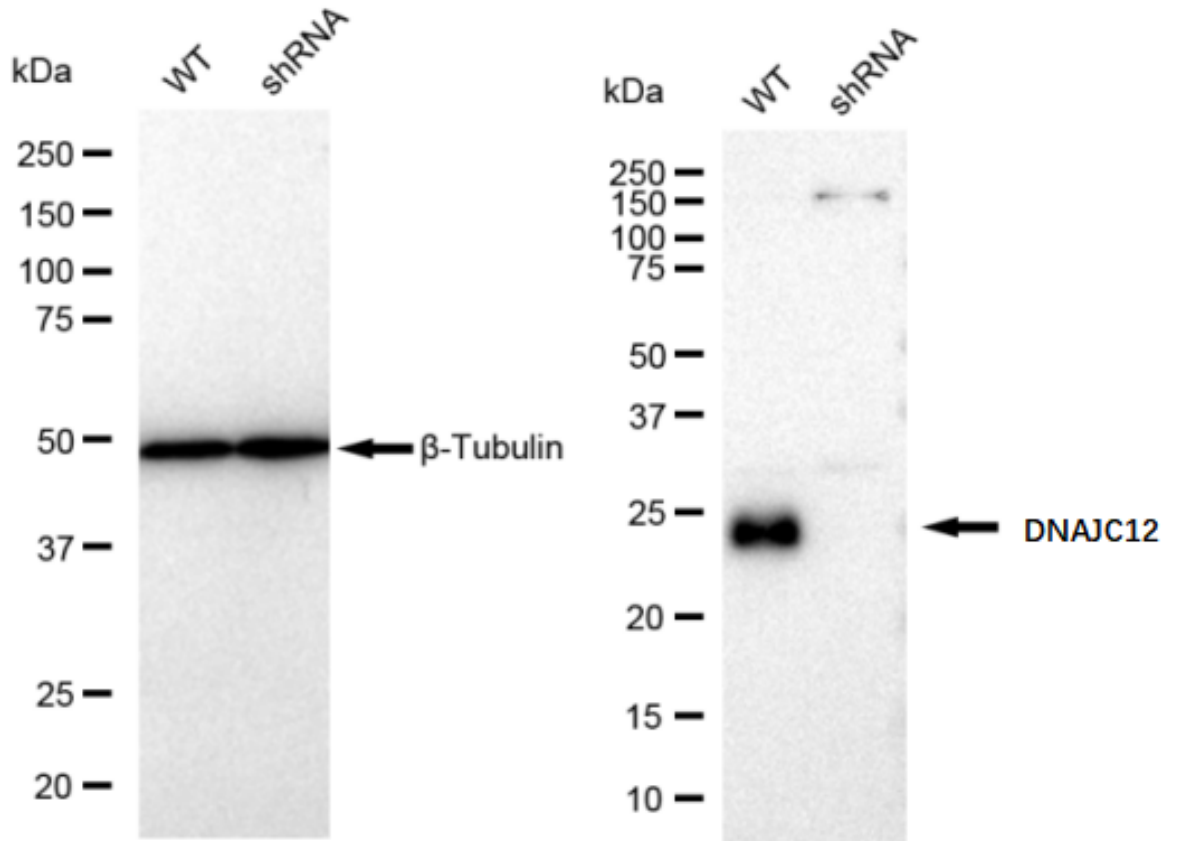
Flow cytometric analysis of DNAJC12 expression in HeLa cells using DNAJC12 antibody 1:2,000. Green, isotype control; red, DNAJC12.



Immunocytochemical staining of HeLa cells with DNAJC12 antibody 1:1,000. Nuclei were stained blue with DAPI; DNAJC12 was stained magenta with Alexa Fluor® 647. Images were taken using Leica stellaris 5. Protein abundance based on laser Intensity and smart gain: Low. Scale bar: 20 μm .



Western blotting analysis using anti-DNAJC12 antibody 1:5,000 and HRP-conjugated goat anti-rabbit secondary antibody 1:20,000 respectively. Image was developed using FeQ™ ECL Substrate Kit . DNAJC12, DnaJ heat shock protein family (Hsp40) member C12.



Western blotting analysis using anti-DNAJC12 antibody 1:5,000 and HRP-conjugated goat anti-rabbit secondary antibody 1:20,000 respectively. Image was developed using FeQ™ ECL Substrate Kit .