



SunLong Biotech Co.,LTD
Tel: 0086-571- 56623320 Fax:0086-571- 56623318
E-mail:sales@sunlongbiotech.com
www.sunlongbiotech.com

[KD-Validated] Anti-Dihydrolipoamide dehydrogenase Rabbit Monoclonal Antibody

Cat No.: KD-10311

Aliases:

DLD; Dihydrolipoamide Dehydrogenase; OGDC-E3; DLDH; GCSL; LAD; E3; E3 Component Of Pyruvate Dehydrogenase Complex, 2-Oxo-Glutarate Complex, Branched Chain Keto Acid Dehydrogenase Complex; Dihydrolipoyl Dehydrogenase, Mitochondrial; Glycine Cleavage System L Protein; EC 1.8.1.4; PHE3; Dihydrolipoamide Dehydrogenase (E3 Component Of Pyruvate Dehydrogenase Complex, 2-Oxo-Glutarate Complex, Branched Chain Keto Acid Dehydrogenase Complex); Epididymis Secretory Sperm Binding Protein; Glycine Cleavage System Protein L; Lipoamide Dehydrogenase; Lipoyl Dehydrogenase; Lipoamide Reductase; Diaphorase; EC 1.8.1 48; DLDD

Background:

UniProt Entry: [P09622](#);NCBI Gene Entry: [1738](#)

Application Information

Molecular Weight: Predicted, 54 kDa, observed, 56 kDa Clonality: Rabbit monoclonal antibody Clone ID: 23GB3825 Species Reactivity: Human, Mouse, Rat Applications Tested: Western Blotting (WB), Flow Cytometry (FCM)

Immunogen

A synthesized peptide derived from human DLDH

Isotype

Rabbit IgG

Storage Buffer

Supplied in PBS (pH 7.4) containing 50% glycerol, and 0.02% sodium azide.

Storage

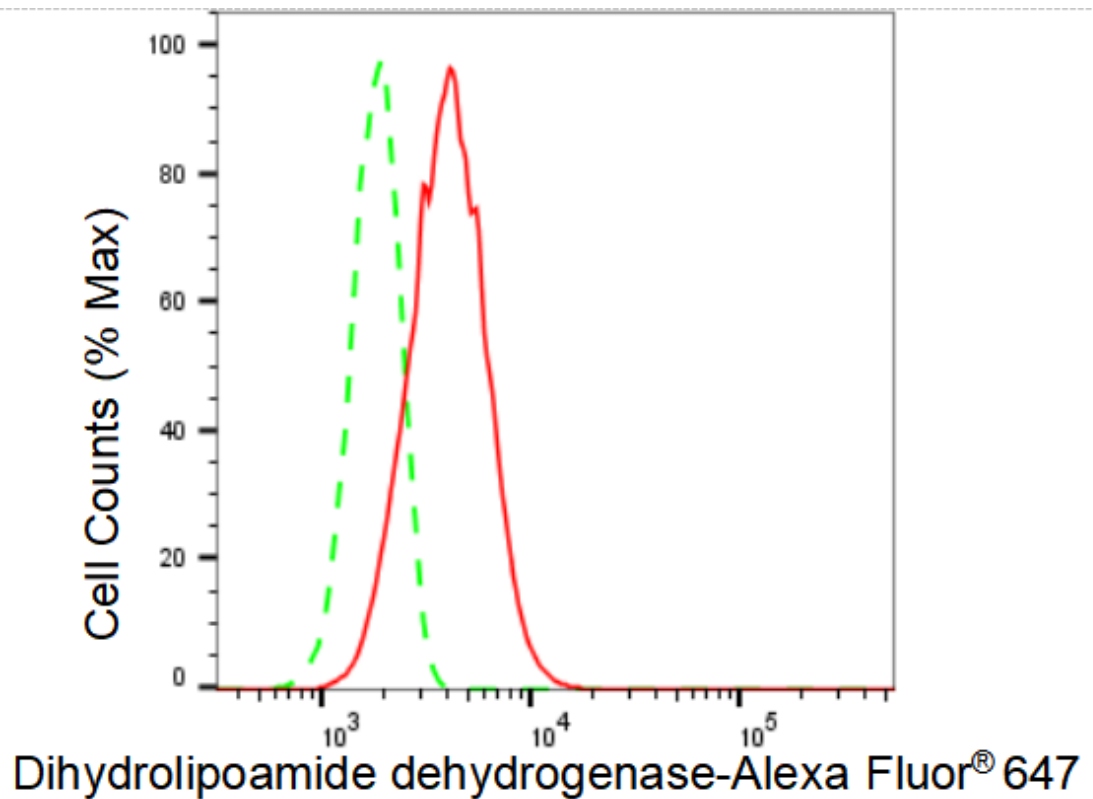
Store at -20 °C for one year.

Recommended Dilutions

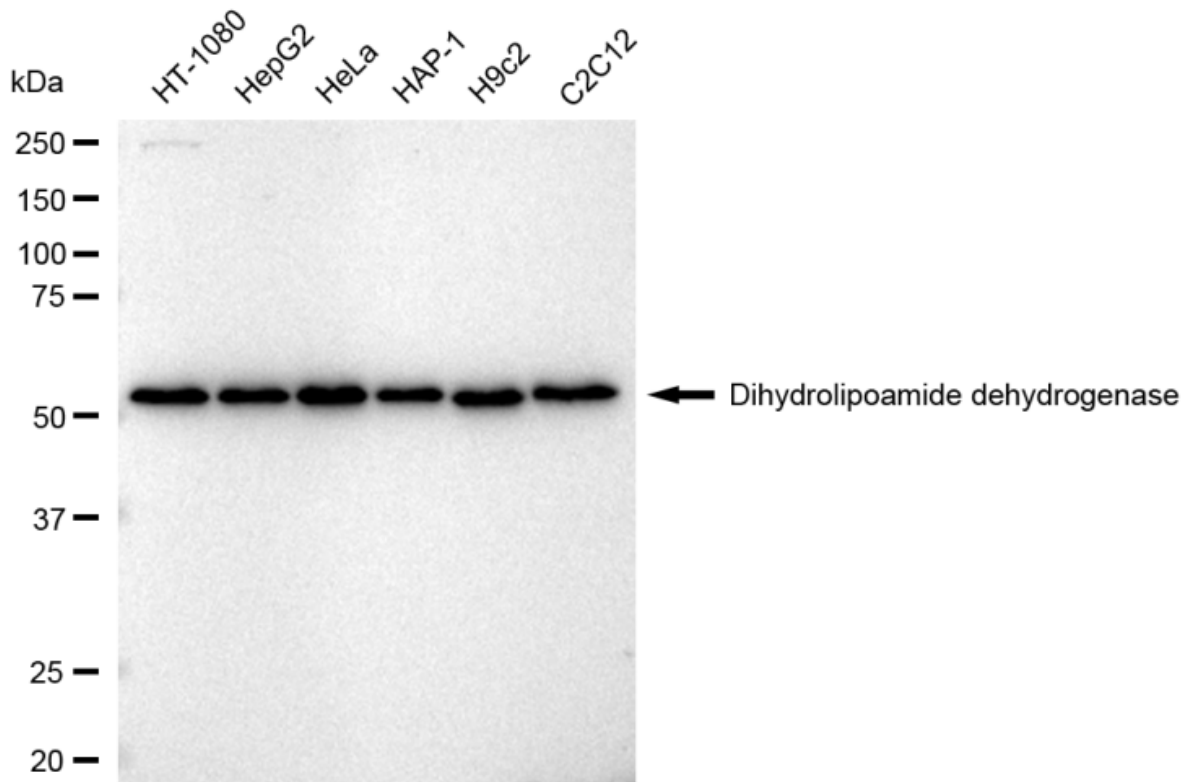
Western Blotting (WB): 1:1,000-1:5,000 Flow Cytometry (FCM): 1:2,000

Protocols

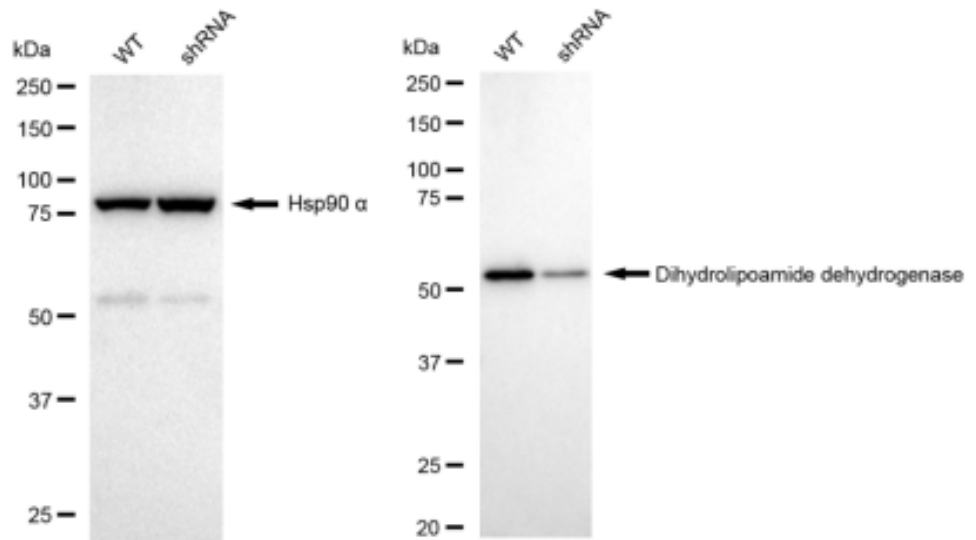
For general and specific antibody protocols please visit our website. Read all instructions before using this product.



Flow cytometric analysis of Dihydrolipoamide dehydrogenase expression in HT-1080 cells using Dihydrolipoamide dehydrogenase antibody 1:2,000. Green, isotype control; red, Dihydrolipoamide dehydrogenase.



Western blotting analysis using anti-Dihydrolipoamide dehydrogenase antibody 1:5,000 and HRP-conjugated goat anti-rabbit secondary antibody 1:20,000 respectively. Image was developed using FeQ™ ECL Substrate Kit .



Western blotting analysis using anti-Dihydrolipoamide dehydrogenase antibody 1:5,000 and HRP-conjugated goat anti-rabbit secondary antibody 1:20,000 respectively. Image was developed using FeQ™ ECL Substrate Kit .