



SunLong Biotech Co.,LTD
Tel: 0086-571- 56623320 Fax:0086-571- 56623318
E-mail:sales@sunlongbiotech.com
www.sunlongbiotech.com

[KD-Validated] Anti-Pyruvate Dehydrogenase E2 Rabbit Monoclonal Antibody

Cat No.: KD-10310

Aliases:

DLAT; Dihydrolipoamide S-Acetyltransferase; PBC;DLTA; PDC-E2; PDCE2; M2 Antigen Complex 70 KDa Subunit; E2 Component Of Pyruvate Dehydrogenase Complex; EC 2.3.1.12; Dihydrolipoamide Acetyltransferase Component Of Pyruvate Dehydrogenase Complex; Dihydrolipoyllysine-Residue Acetyltransferase Component Of Pyruvate Dehydrogenase Complex Mitochondrial; Pyruvate Dehydrogenase Complex Component E2; 70 KDa Mitochondrial Autoantigen Of Primary Biliary Cirrhosis; EC 2.3.1

Background:

UniProt Entry: [P10515](#);NCBI Gene Entry: [1737](#)

Application Information

Molecular Weight: Predicted, 69 kDa, observed, 69 kDa Clonality: Rabbit monoclonal antibody Clone ID: 23GB1010 Species Reactivity: Human, Mouse, Rat Applications Tested: Western Blotting (WB), Flow Cytometry (FCM), Immunocytochemistry (IC)

Immunogen

A synthesized peptide derived from human Pyruvate Dehydrogenase E2

Isotype

Rabbit IgG

Storage Buffer

Supplied in PBS (pH 7.4) containing 50% glycerol, and 0.02% sodium azide.

Storage

Store at -20 °C for one year.

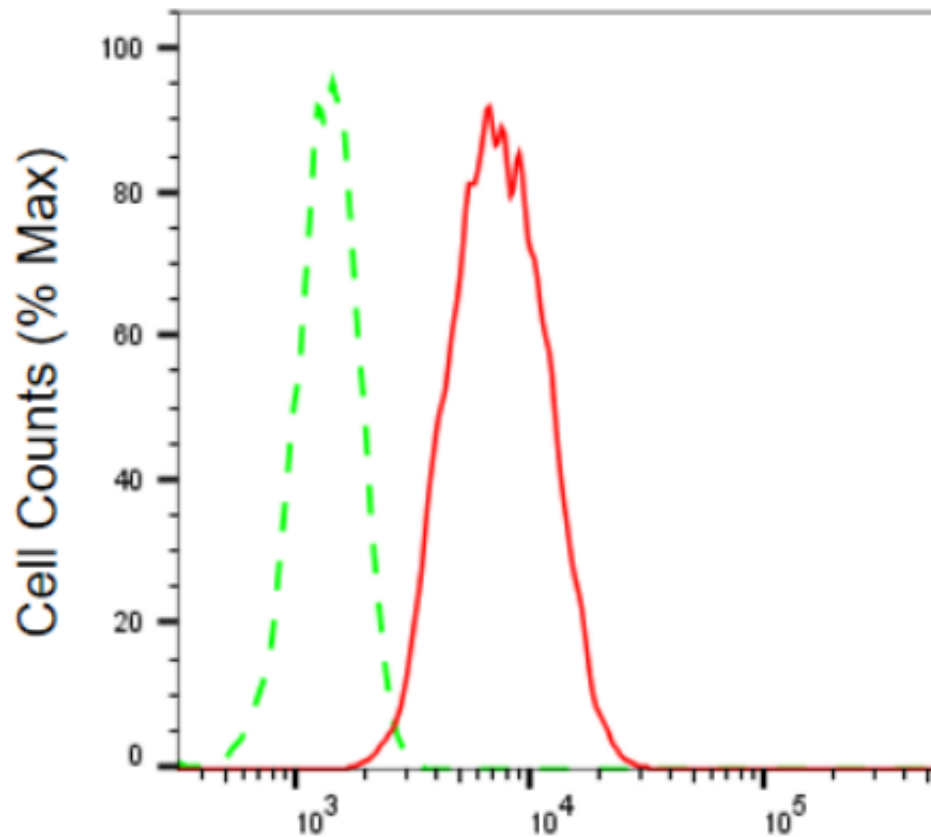
Recommended Dilutions

Western Blotting (WB): 1:1,000-1:5,000 Flow Cytometry (FCM): 1:2,000

Immunocytochemistry (IC): 1:1,000

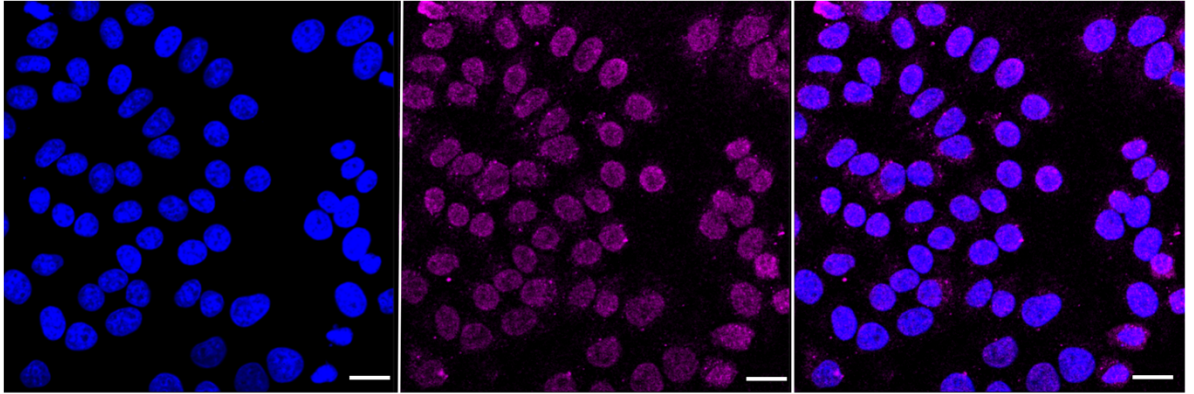
Protocols

For general and specific antibody protocols please visit our website. Read all instructions before using this product.

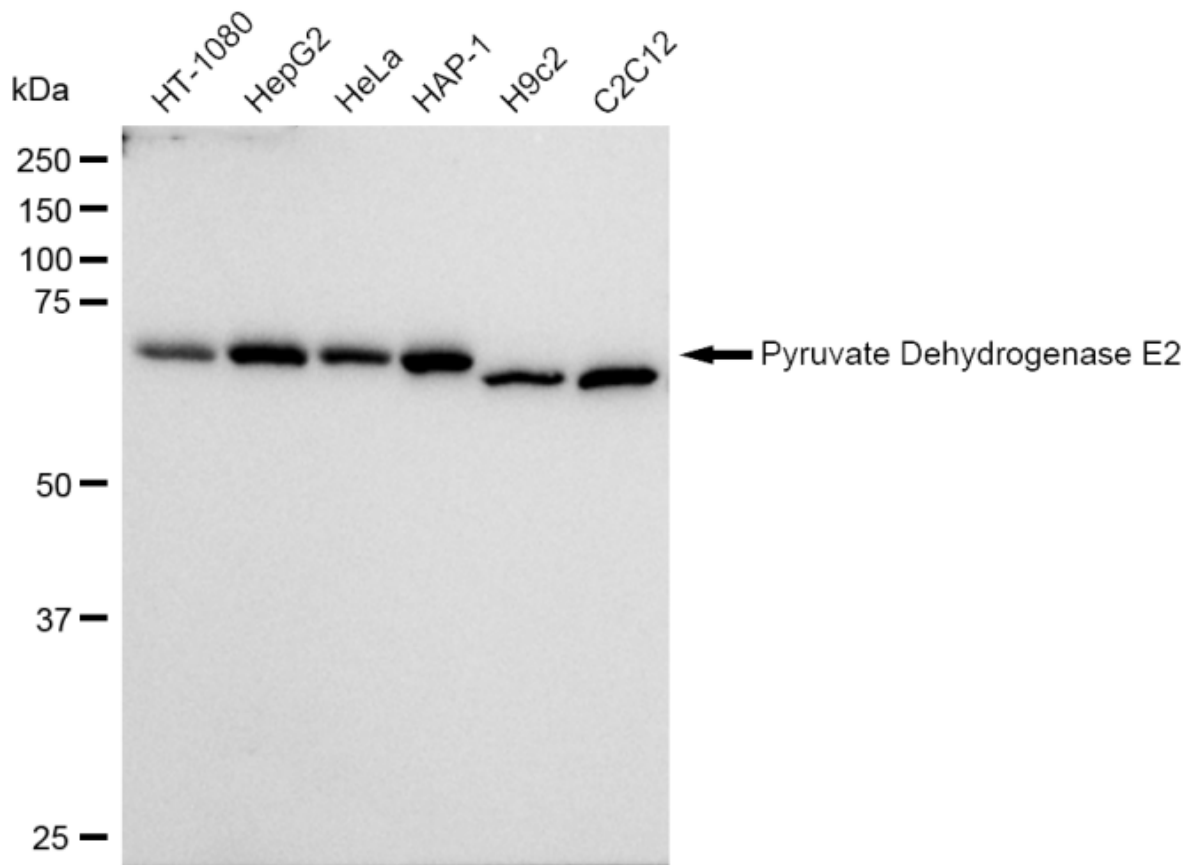


Pyruvate Dehydrogenase E2-Alexa Fluor® 647

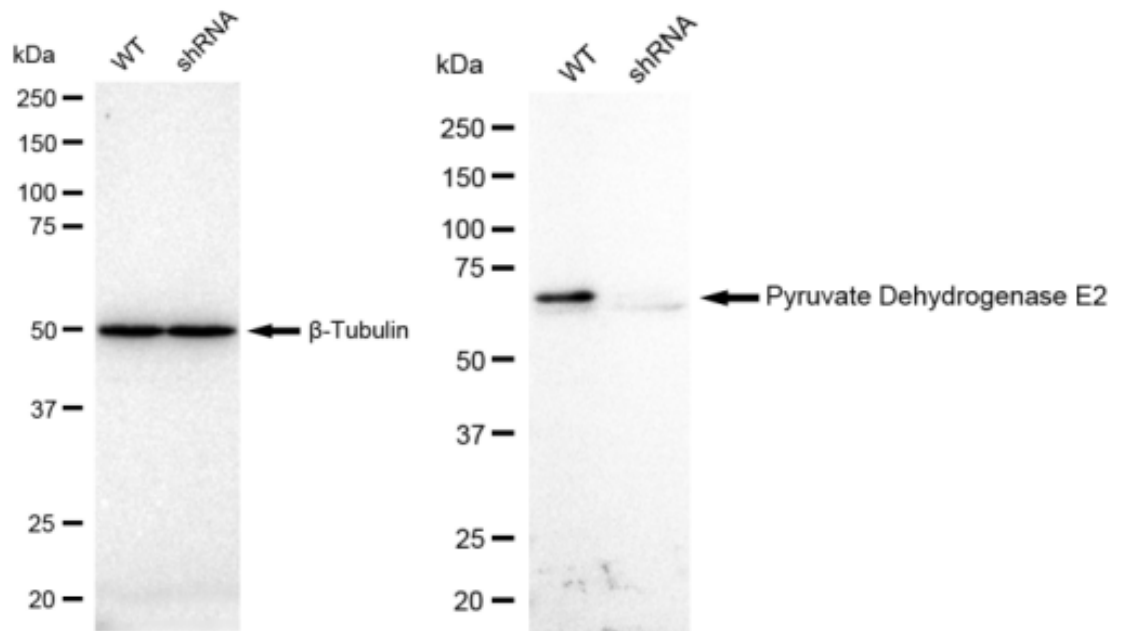
Flow cytometric analysis of Pyruvate Dehydrogenase E2 expression in HepG2 cells using Pyruvate Dehydrogenase E2 antibody 1:2,000. Green, isotype control; red, Pyruvate Dehydrogenase E2.



Immunocytochemical staining of HepG2 cells with Pyruvate Dehydrogenase E2 antibody 1:1,000. Nuclei were stained blue with DAPI; Pyruvate Dehydrogenase E2 was stained magenta with Alexa Fluor® 647. Images were taken using Leica stellaris 5. Protein abundance based on laser Intensity and smart gain: Low. Scale bar: 20 μ m.



Western blotting analysis using anti-Pyruvate Dehydrogenase E2 antibody 1:5,000 and HRP-conjugated goat anti-rabbit secondary antibody 1:50,000 respectively. Image was developed using FeQ™ ECL Substrate Kit .



Western blotting analysis using anti-Pyruvate Dehydrogenase E2 antibody 1:5,000 and HRP-conjugated goat anti-rabbit secondary antibody 1:20,000 respectively. Image was developed using FeQ™ ECL Substrate Kit .