



SunLong Biotech Co.,LTD
Tel: 0086-571- 56623320 Fax:0086-571- 56623318
E-mail:sales@sunlongbiotech.com
www.sunlongbiotech.com

[KD-Validated] Anti-DLAT Rabbit Monoclonal Antibody

Cat No.: KD-10309

Aliases:

DLAT; Dihydrolipoamide S-Acetyltransferase; PDC-E2; DLTA; E2; Dihydrolipoyllysine-Residue Acetyltransferase Component Of Pyruvate; Dehydrogenase Complex, Mitochondrial; Dihydrolipoamide Acetyltransferase Component Of Pyruvate Dehydrogenase Complex; 70 KDa Mitochondrial Autoantigen Of Primary Biliary Cirrhosis; E2 Component Of Pyruvate Dehydrogenase Complex; Pyruvate Dehydrogenase Complex Component E2; M2 Antigen Complex 70 KDa Subunit; EC 2.3.1.12; PDCE2; PBC; Dihydrolipoyllysine-Residue Acetyltransferase; EC 2.3.1

Background:

UniProt Entry: [P10515](#);NCBI Gene Entry: [1737](#)

Application Information

Molecular Weight: Predicted, 71 kDa, observed, 71 kDa Clonality: Rabbit monoclonal antibody Clone ID: 23GB805 Species Reactivity: Human, Mouse, Rat Applications Tested: Western Blotting (WB), Flow Cytometry (FCM), Immunocytochemistry (IC)

Immunogen

A synthesized peptide derived from human DLAT

Isotype

Rabbit IgG

Storage Buffer

Supplied in PBS (pH 7.4) containing 50% glycerol, and 0.02% sodium azide.

Storage

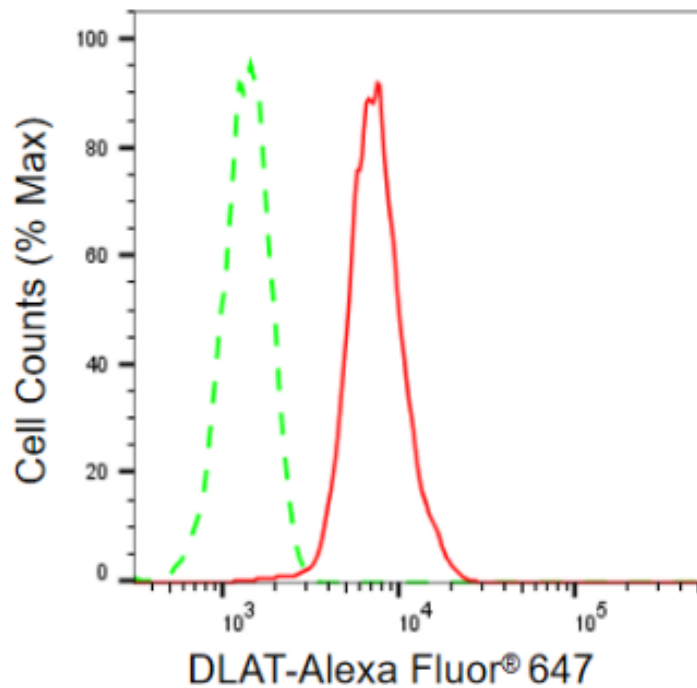
Store at -20 °C for one year.

Recommended Dilutions

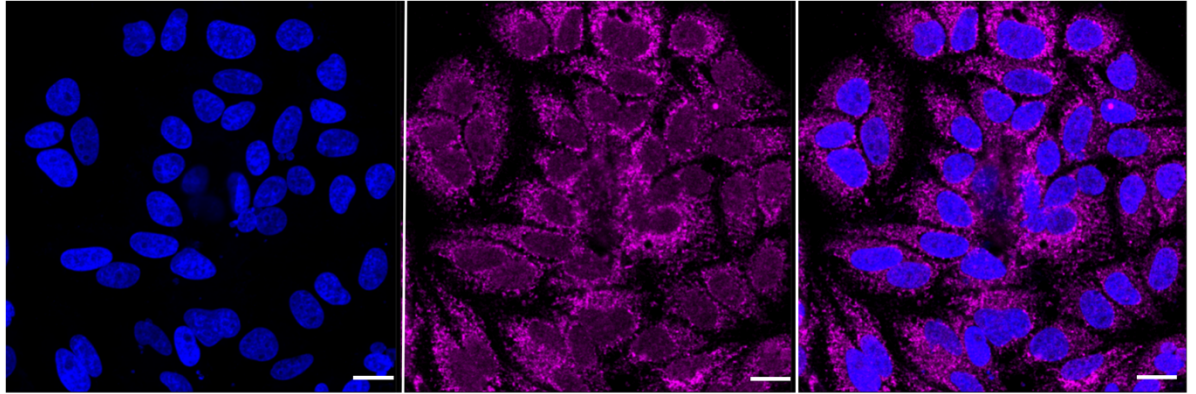
Western Blotting (WB): 1:1,000-1:5,000 Flow Cytometry (FCM): 1:2,000
Immunocytochemistry (IC): 1:1,000

Protocols

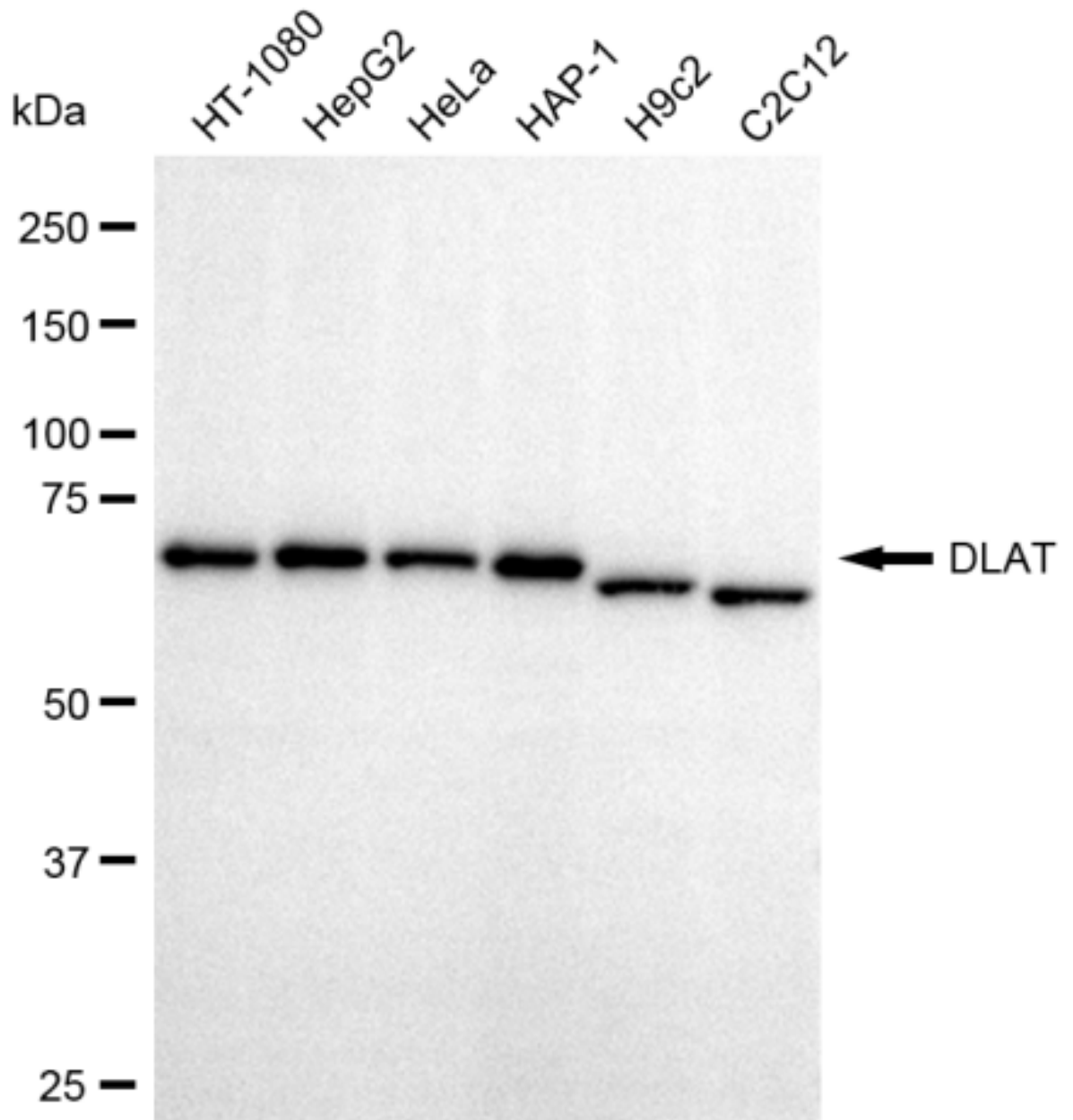
For general and specific antibody protocols please visit our website. Read all instructions before using this product.



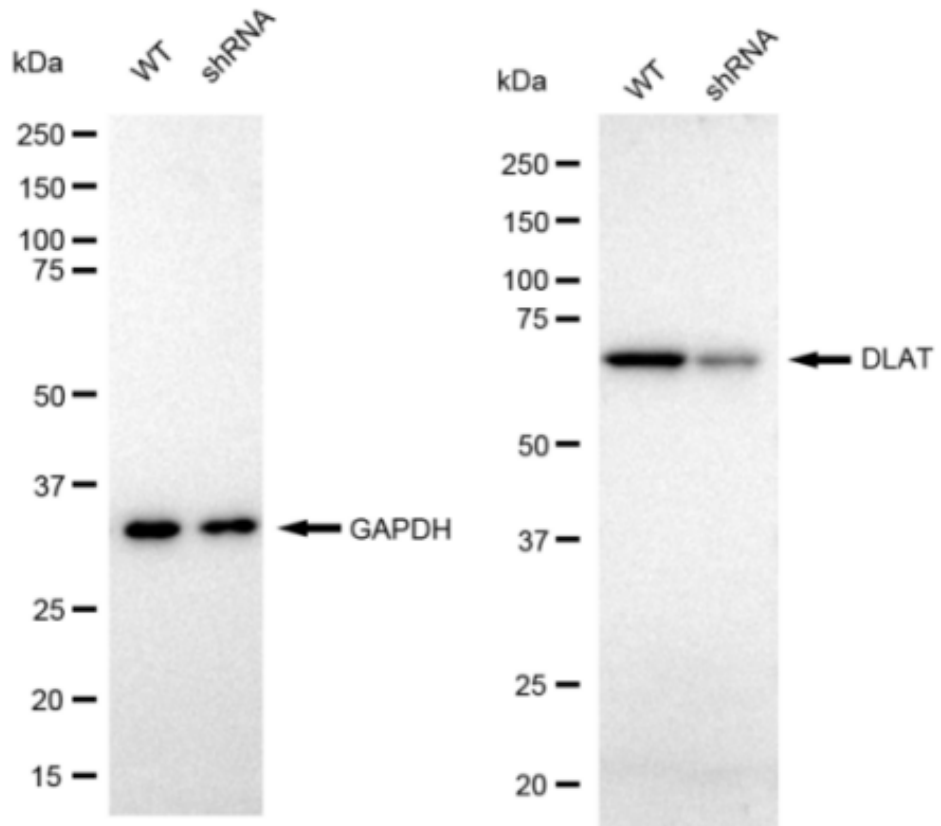
Flow cytometric analysis of DLAT expression in HepG2 cells using DLAT antibody 1:2,000. Green, isotype control; red, DLAT.



Immunocytochemical staining of HepG2 cells with DLAT antibody 1:1,000. Nuclei were stained blue with DAPI; DLAT was stained magenta with Alexa Fluor® 647. Images were taken using Leica stellaris 5. Protein abundance based on laser Intensity and smart gain: Medium. Scale bar: 20 μm .



Western blotting analysis using anti-DLAT antibody 1:5,000 and HRP-conjugated goat anti-rabbit secondary antibody 1:50,000 respectively. Image was developed using FeQ™ ECL Substrate Kit .



Western blotting analysis using anti-DLAT antibody 1:5,000 and HRP-conjugated goat anti-rabbit secondary antibody 1:50,000 respectively. Image was developed using FeQ™ ECL Substrate Kit .