



SunLong Biotech Co.,LTD
Tel: 0086-571- 56623320 Fax:0086-571- 56623318
E-mail:sales@sunlongbiotech.com
www.sunlongbiotech.com

[KD-Validated] Anti-Dihydrofolate reductase Rabbit Monoclonal Antibody

Cat No.: KD-10307

Aliases:

DHFR; Dihydrofolate Reductase; DHFR1; EC 1.5.1.3; DHFRP1; DYR

Background:

UniProt Entry: [P00374](#);NCBI Gene Entry: [1719](#)

Application Information

Molecular Weight: Predicted, 21 kDa, observed, 18 kDa Clonality: Rabbit monoclonal antibody Clone ID: 23GB3575 Species Reactivity: Human, Mouse, Rat Applications Tested: Western Blotting (WB), Flow Cytometry (FCM), Immunocytochemistry (IC)

Immunogen

A synthesized peptide derived from human DHFR

Isotype

Rabbit IgG

Storage Buffer

Supplied in PBS (pH 7.4) containing 50% glycerol, and 0.02% sodium azide.

Storage

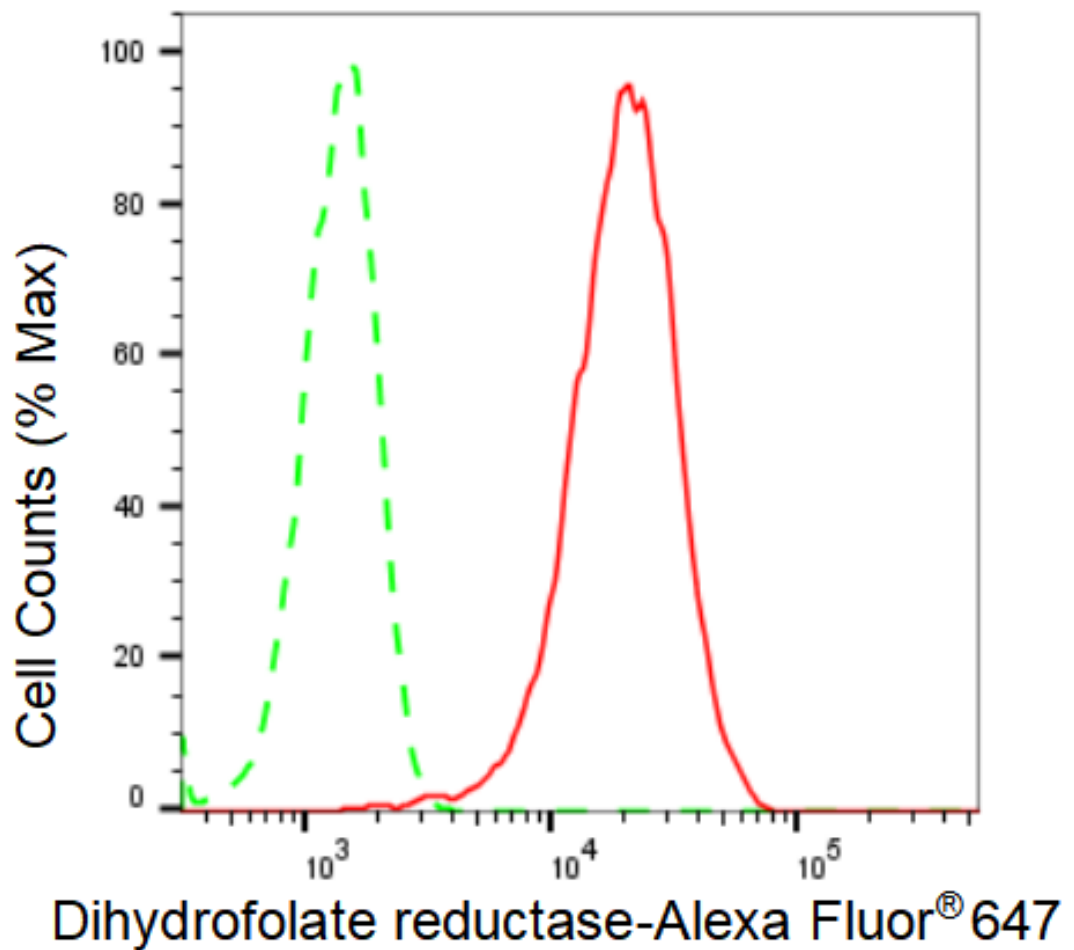
Store at -20 °C for one year.

Recommended Dilutions

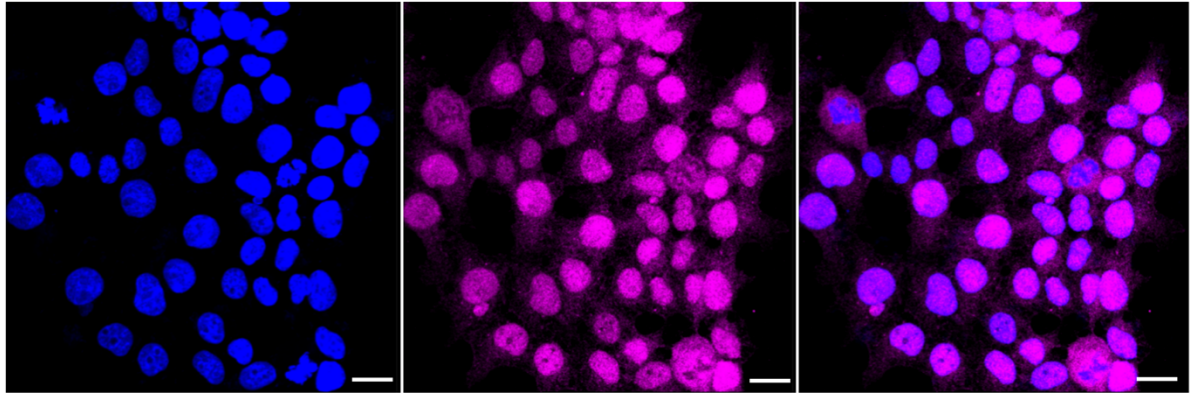
Western Blotting (WB): 1:1,000-1:5,000 Flow Cytometry (FCM): 1:2,000
Immunocytochemistry (IC): 1:1,000

Protocols

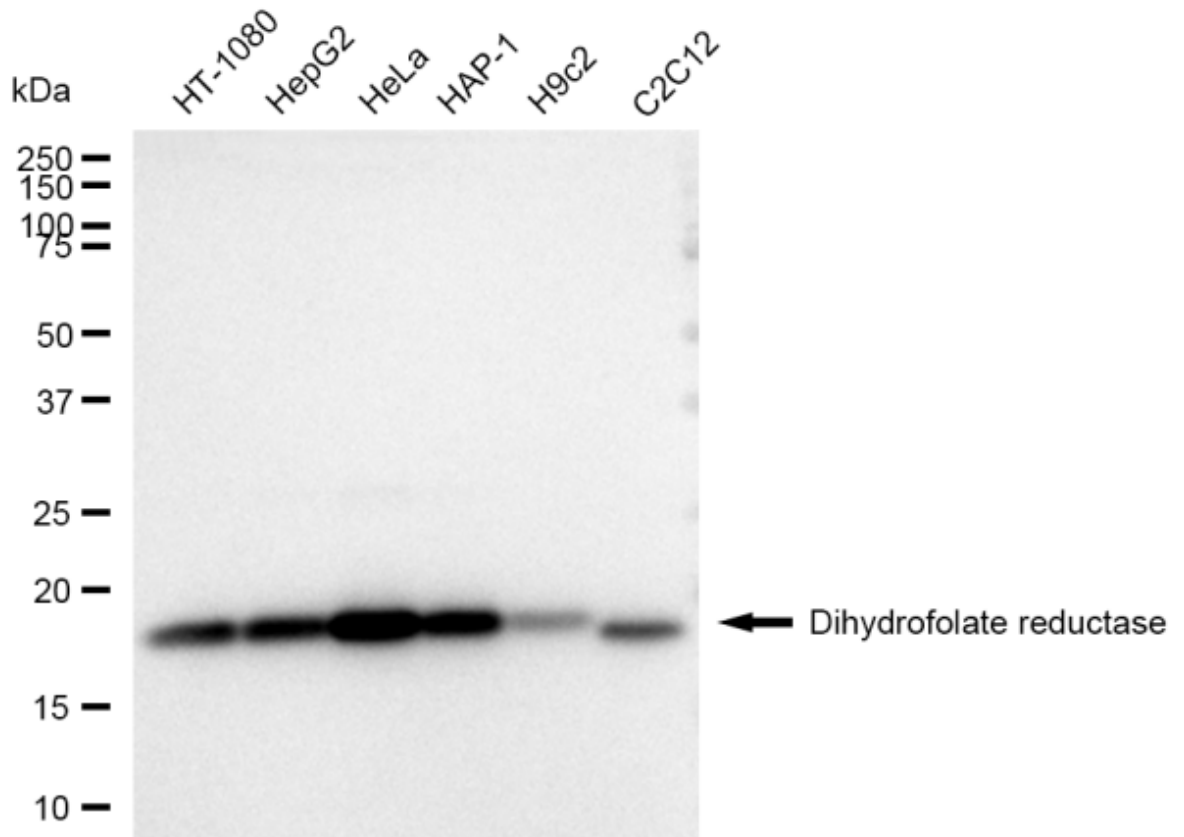
For general and specific antibody protocols please visit our website. Read all instructions before using this product.



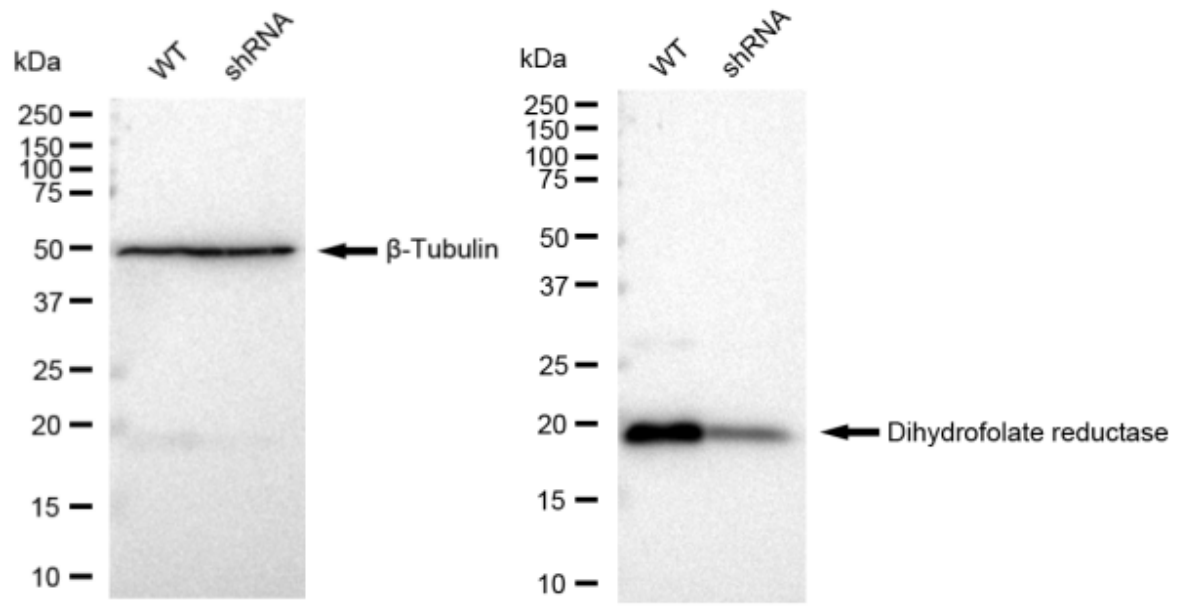
Flow cytometric analysis of Dihydrofolate reductase expression in HeLa cells using Dihydrofolate reductase antibody 1:2,000. Green, isotype control; red, Dihydrofolate reductase.



Immunocytochemical staining of HeLa cells with Dihydrofolate reductase antibody 1:1,000. Nuclei were stained blue with DAPI; Dihydrofolate reductase was stained magenta with Alexa Fluor® 647. Images were taken using Leica stellaris 5. Protein abundance based on laser Intensity and smart gain: Medium. Scale bar: 20 μ m.



Western blotting analysis using anti-Dihydrofolate reductase antibody 1:5,000 and HRP-conjugated goat anti-rabbit secondary antibody 1:20,000 respectively. Image was developed using FeQ™ ECL Substrate Kit .



Western blotting analysis using anti-Dihydrofolate reductase antibody 1:5,000 and HRP-conjugated goat anti-rabbit secondary antibody 1:20,000 respectively. Image was developed using FeQ™ ECL Substrate Kit .