



SunLong Biotech Co.,LTD
Tel: 0086-571- 56623320 Fax:0086-571- 56623318
E-mail:sales@sunlongbiotech.com
www.sunlongbiotech.com

[KD-Validated] Anti-DGCR8 Rabbit Monoclonal Antibody

Cat No.: KD-10306

Aliases:

DGCR8; DGCR8 Microprocessor Complex Subunit; DGCRK6; DiGeorge Syndrome Critical Region Gene 8; Microprocessor Complex Subunit DGCR8; DiGeorge Syndrome Critical Region 8; C22orf12; Pasha; Gy1; DGCR8, Microprocessor Complex Subunit; Chromosome 22 Open Reading Frame 12; C22ORF12; PASHA; GY1

Background:

UniProt Entry: [Q8WYQ5](#);NCBI Gene Entry: [54487](#)

Application Information

Molecular Weight: Predicted, 86 kDa, observed, 110 kDa Clonality: Rabbit monoclonal antibody Clone ID: 23GB1615 Species Reactivity: Human, Mouse, Rat Applications Tested: Western Blotting (WB)

Immunogen

A synthesized peptide derived from human DGCR8

Isotype

Rabbit IgG

Storage Buffer

Supplied in PBS (pH 7.4) containing 50% glycerol, and 0.02% sodium azide.

Storage

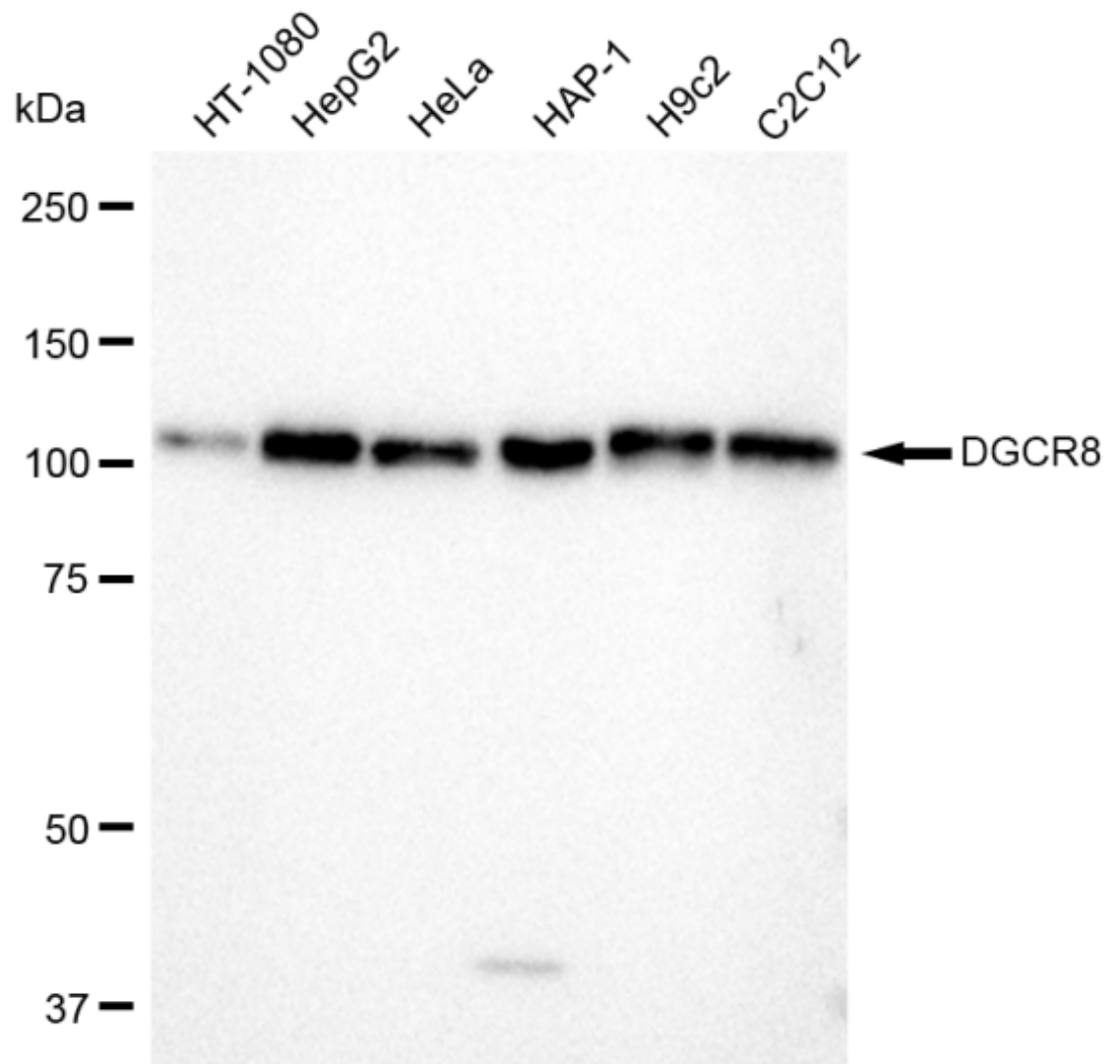
Store at -20 °C for one year.

Recommended Dilutions

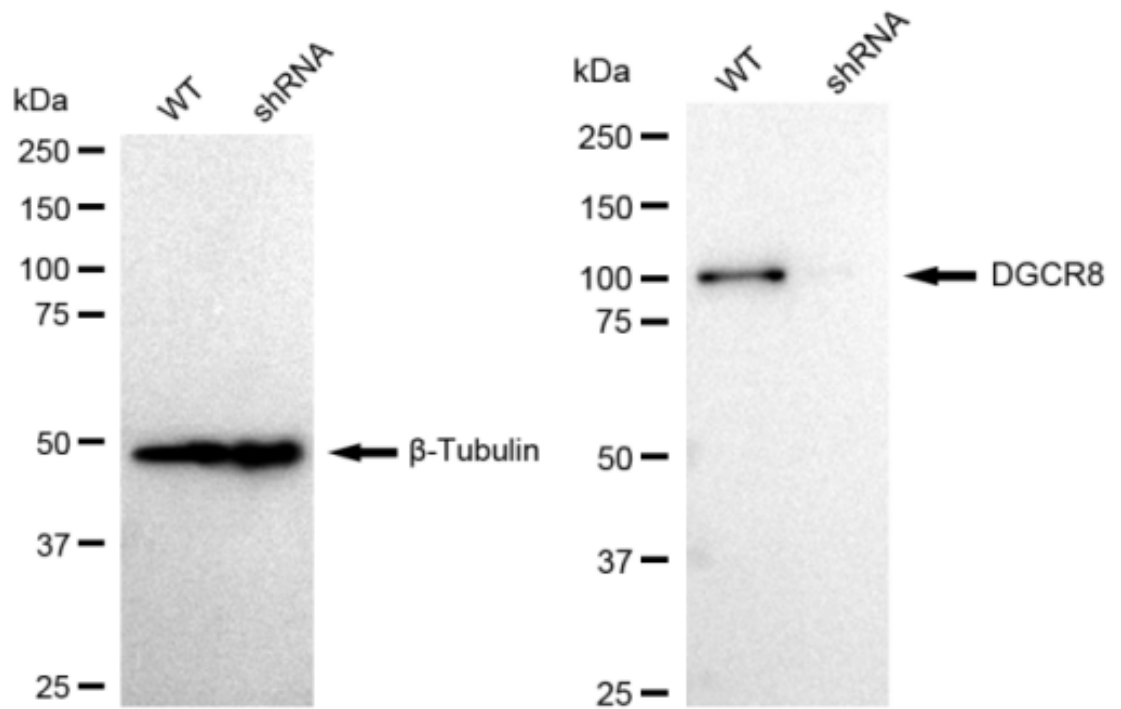
Western Blotting (WB): 1:1,000-1:5,000

Protocols

For general and specific antibody protocols please visit our website. Read all instructions before using this product.



Western blotting analysis using anti-DGCR8 antibody 1:5,000 and HRP-conjugated goat anti-rabbit secondary antibody 1:20,000 respectively. Image was developed using FeQ™ ECL Substrate Kit .



Western blotting analysis using anti-DGCR8 antibody 1:5,000 and HRP-conjugated goat anti-rabbit secondary antibody 1:20,000 respectively. Image was developed using FeQ™ ECL Substrate Kit .