



SunLong Biotech Co.,LTD
Tel: 0086-571- 56623320 Fax:0086-571- 56623318
E-mail:sales@sunlongbiotech.com
www.sunlongbiotech.com

[KD-Validated] Anti-AMBP Rabbit Monoclonal Antibody

Cat No.: KD-10070

Aliases:

AMBP; Alpha-1-Microglobulin/Bikunin Precursor; HCP; Protein HC; IATIL; ITILC; EDC1; HI30; ITIL; UTI; Complex-Forming Glycoprotein Heterogeneous In Charge; Inter-Alpha-Trypsin Inhibitor Light Chain; Growth-Inhibiting Protein 19; Uronic-Acid-Rich Protein; Protein AMBP; Trypstatin; Uristatin; Bikunin; ITI; A1M

Background:

UniProt Entry: [P02760](#);NCBI Gene Entry: [259](#)

Application Information

Molecular Weight: Predicted, 39 kDa, observed, 39 kDa Clonality: Rabbit monoclonal antibody Clone ID: 23GB3200 Species Reactivity: Human, Mouse, Rat Applications Tested: Western Blotting (WB), Immunocytochemistry (IC)

Immunogen

A synthesized peptide derived from human AMBP

Isotype

Rabbit IgG

Storage Buffer

Supplied in PBS (pH 7.4) containing 50% glycerol, and 0.02% sodium azide.

Storage

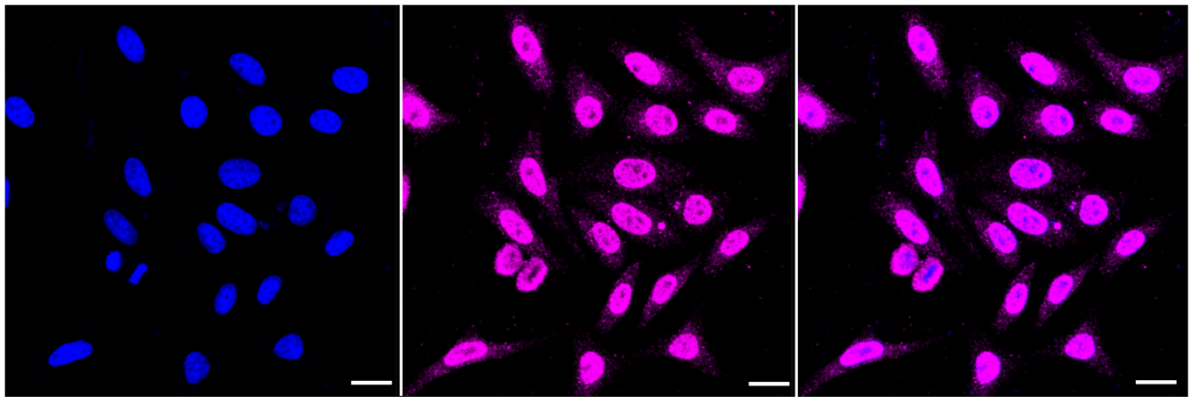
Store at -20 °C for one year.

Recommended Dilutions

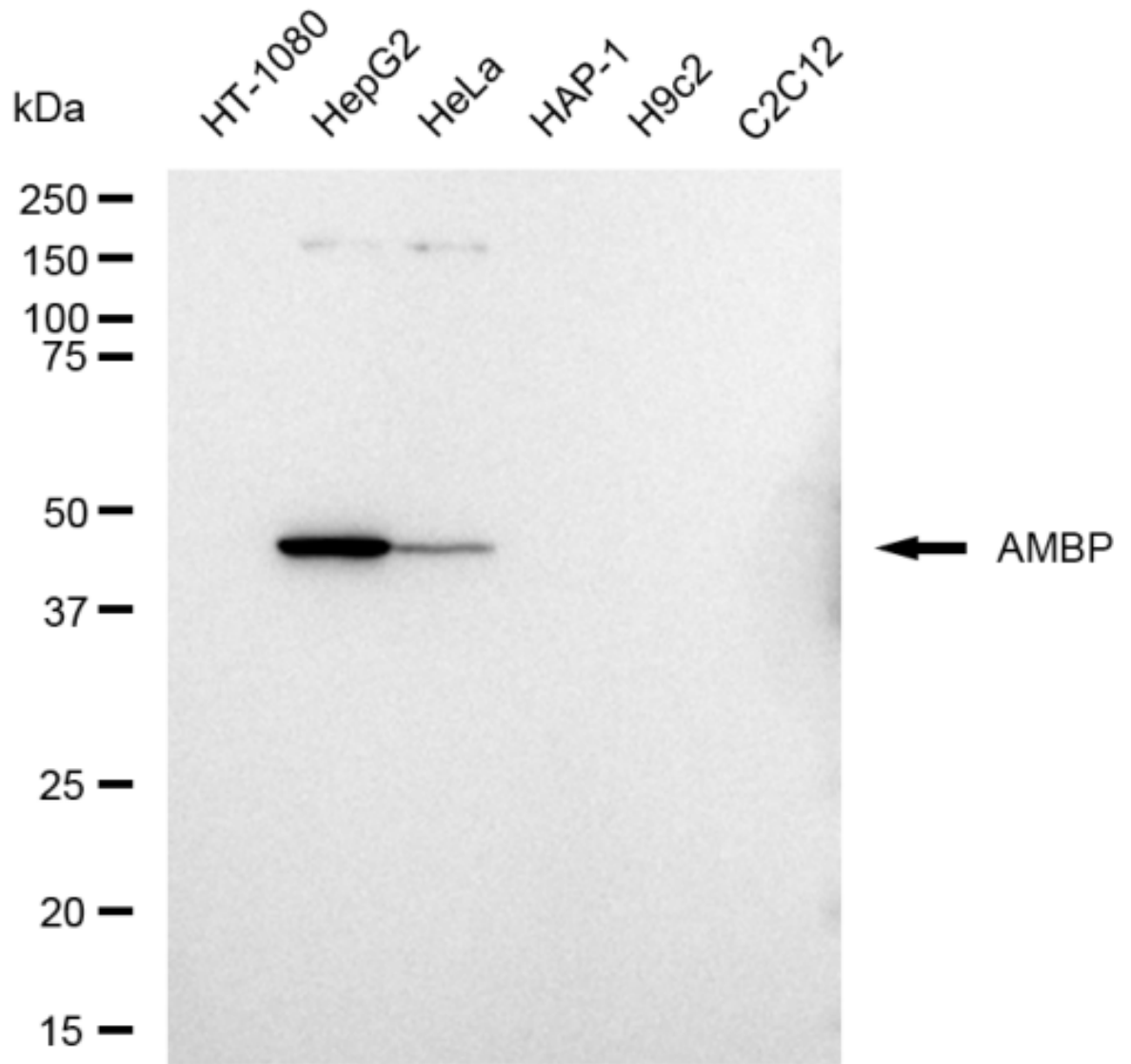
Western Blotting (WB): 1:1,000-1:5,000 Immunocytochemistry (IC): 1:1,000

Protocols

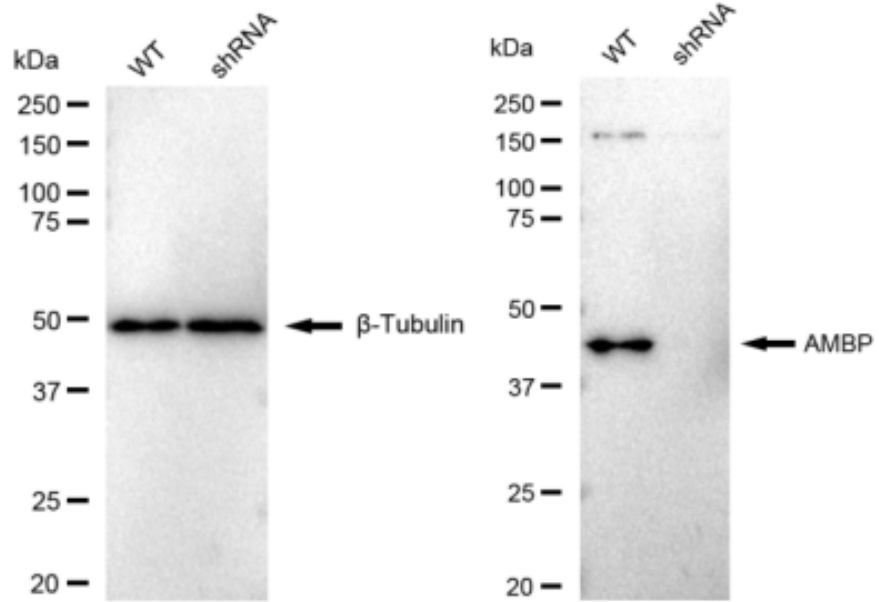
For general and specific antibody protocols please visit our website. Read all instructions before using this product.



Immunocytochemical staining of HepG2 cells with AMBP antibody 1:1,000. Nuclei were stained blue with DAPI; AMBP was stained magenta with Alexa Fluor® 647. Images were taken using Leica stellaris 5. Protein abundance based on laser Intensity and smart gain: Medium. Scale bar: 20 µm.



Western blotting analysis using anti-AMBP antibody 1:5,000 and HRP-conjugated goat anti-rabbit secondary antibody 1:20,000 respectively. Image was developed using FeQ™ ECL Substrate Kit .



Western blotting analysis using anti-AMBP antibody 1:5,000 and HRP-conjugated goat anti-rabbit secondary antibody 1:20,000 respectively. Image was developed using FeQ™ ECL Substrate Kit .