



SunLong Biotech Co.,LTD
Tel: 0086-571- 56623320 Fax:0086-571- 56623318
E-mail:sales@sunlongbiotech.com
www.sunlongbiotech.com

[KD-Validated] Anti-ALPP Rabbit Monoclonal Antibody

Cat No.: KD-10069

Aliases:

ALPP; Alkaline Phosphatase, Placental; PLAP; PALP; Alkaline Phosphatase, Placental Type; Alkaline Phosphatase Regan Isozyme; Placental Alkaline Phosphatase 1; EC 3.1.3.1; PLAP-1; Alkaline Phosphatase, Placental (Regan Isozyme); Intestinal-Type Alkaline Phosphatase; Intestinal Alkaline Phosphatase; Placental Alkaline Phosphatase; Alkaline Phosphomonoesterase; Glycerophosphatase; Regan Isozyme; ALPI; ALP; IAP

Background:

UniProt Entry: [P05187](#);NCBI Gene Entry: [250](#)

Application Information

Molecular Weight: Predicted, 58 kDa; observed, 70 kDa Clonality: Rabbit monoclonal antibody Clone ID: 24GB5430 Species Reactivity: Human Applications Tested: Western Blotting (WB), Flow Cytometry (FCM)

Immunogen

A synthesized peptide derived from human Placental alkaline phosphatase (phospho LAP)

Isotype

Rabbit IgG

Storage Buffer

Supplied in PBS (pH 7.4) containing 50% glycerol, and 0.02% sodium azide.

Storage

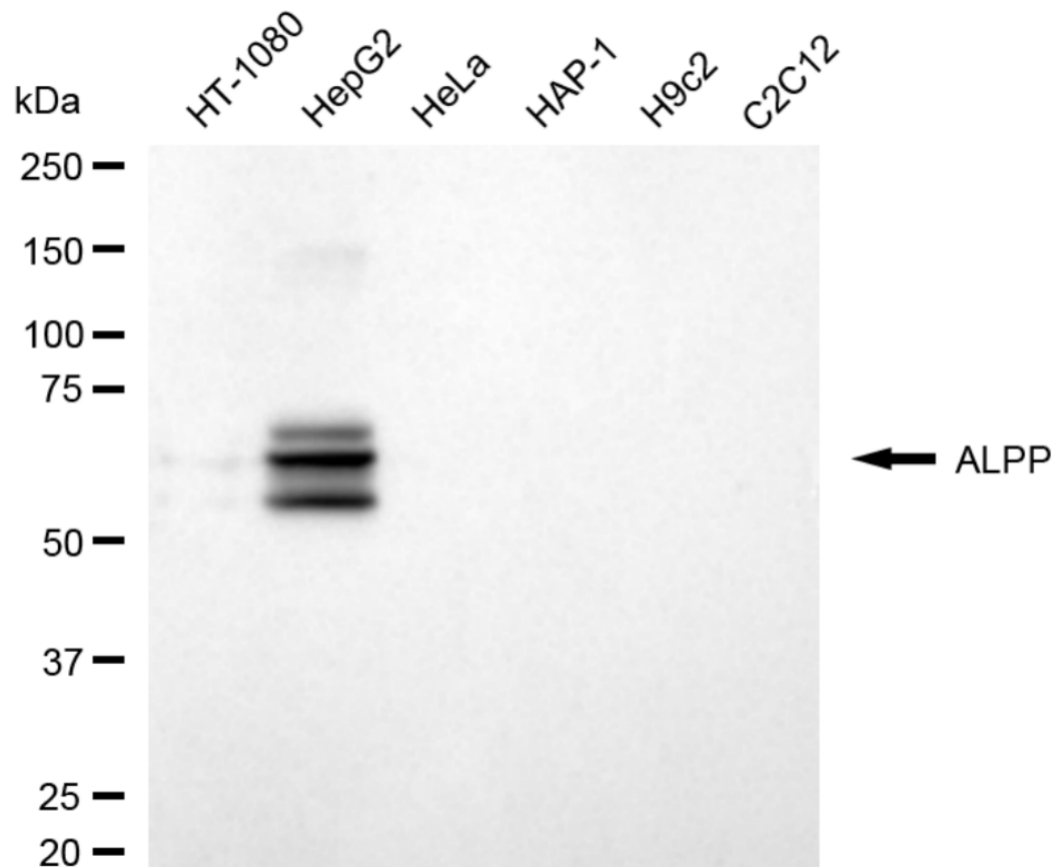
Store at -20 °C for one year.

Recommended Dilutions

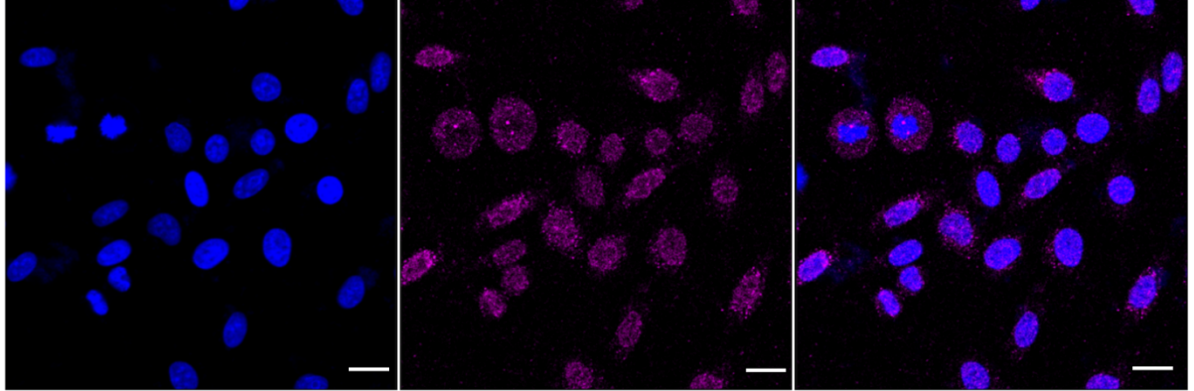
Western Blotting (WB): 1:1,000-1:5,000 Flow Cytometry (FCM): 1:2,000

Protocols

For general and specific antibody protocols please visit our website. Read all instructions before using this product.



Western blotting analysis using anti-ALPP antibody 1:5,000 and HRP-conjugated goat anti-rabbit secondary antibody 1:20,000 respectively. Image was developed using NaQ™ ECL Substrate Kit 1:5,000 and HRP-conjugated goat anti-rabbit secondary antibody 1:20,000 respectively. Image was developed using NaQ™ ECL Substrate Kit 1:2,000. Green, isotype control; red, ALPP.



Immunocytochemical staining of HepG2 cells with anti-ALPP antibody 1:1,000. Nuclei were stained blue with DAPI; ALPP was stained magenta with Alexa Fluor® 647. Images were taken using Leica stellaris 5. Protein abundance based on laser Intensity and smart gain: Medium. Scale bar: 20 μm .