



SunLong Biotech Co.,LTD
Tel: 0086-571- 56623320 Fax:0086-571- 56623318
E-mail:sales@sunlongbiotech.com
www.sunlongbiotech.com

[KD-Validated] Anti-ALKBH1 Rabbit Monoclonal Antibody

Cat No.: KD-10066

Aliases:

ALKBH1; AlkB Homolog 1, Histone H2A Dioxygenase; ABH; ALKBH; HABH; Alpha-Ketoglutarate-Dependent Dioxygenase ABH1; Alkylated DNA Repair Protein AlkB Homolog 1; DNA N6-Methyl Adenine Demethylase ALKBH1; MRNA N(3)-Methylcytidine Demethylase; DNA Oxidative Demethylase ALKBH1; Nucleic Acid Dioxygenase ALKBH1; DNA 6mA Demethylase; DNA Lyase ABH1; AlkB; ABH1; AlkB, Alkylation Repair Homolog 1 (E. Coli); AlkB, Alkylation Repair Homolog (E. Coli); TRNA N1-Methyl Adenine Demethylase; AlkB, Alkylation Repair Homolog 1; Alkylation Repair, AlkB Homolog; DNA Demethylase ALKBH1; EC 1.14.11.51; EC 1.14.11.33; EC 1.14.11.-; EC 4.2.99.18; ALKB

Background:

UniProt Entry: [Q13686](#);NCBI Gene Entry: [8846](#)

Application Information

Molecular Weight: Predicted, 44 kDa, observed, 43 kDa Clonality: Rabbit monoclonal antibody Clone ID: 23GB1385 Species Reactivity: Human Applications Tested: Western Blotting (WB), Immunocytochemistry (IC)

Immunogen

A synthesized peptide derived from ALKBH1

Isotype

Rabbit IgG

Storage Buffer

Supplied in PBS (pH 7.4) containing 50% glycerol, and 0.02% sodium azide.

Storage

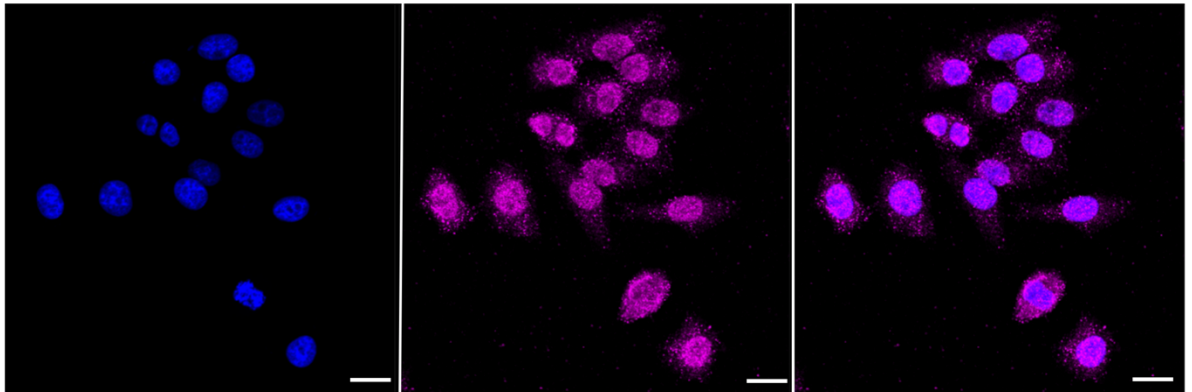
Store at -20 °C for one year.

Recommended Dilutions

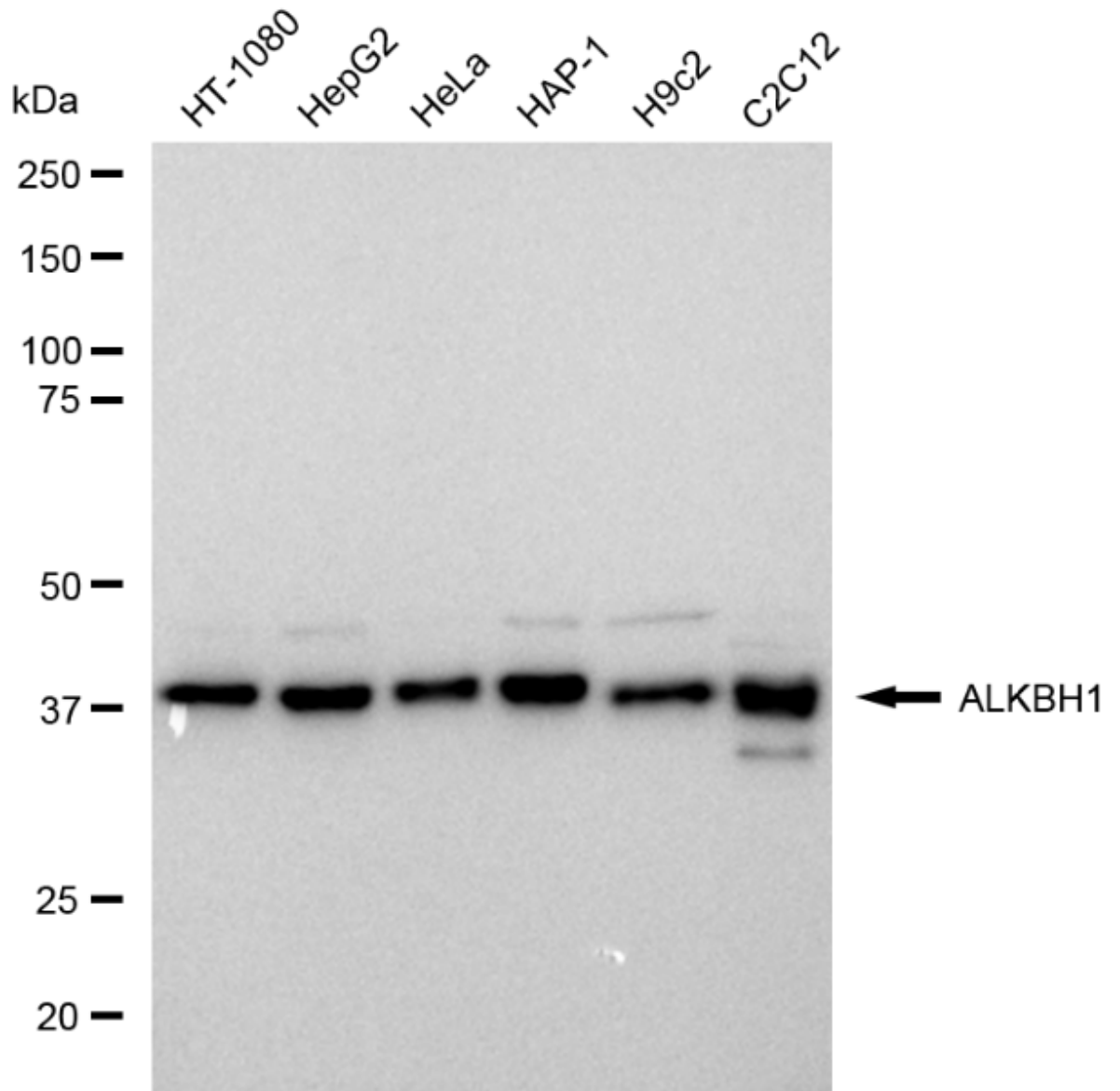
Western Blotting (WB): 1:1,000-1:5,000 Immunocytochemistry (IC): 1:1,000

Protocols

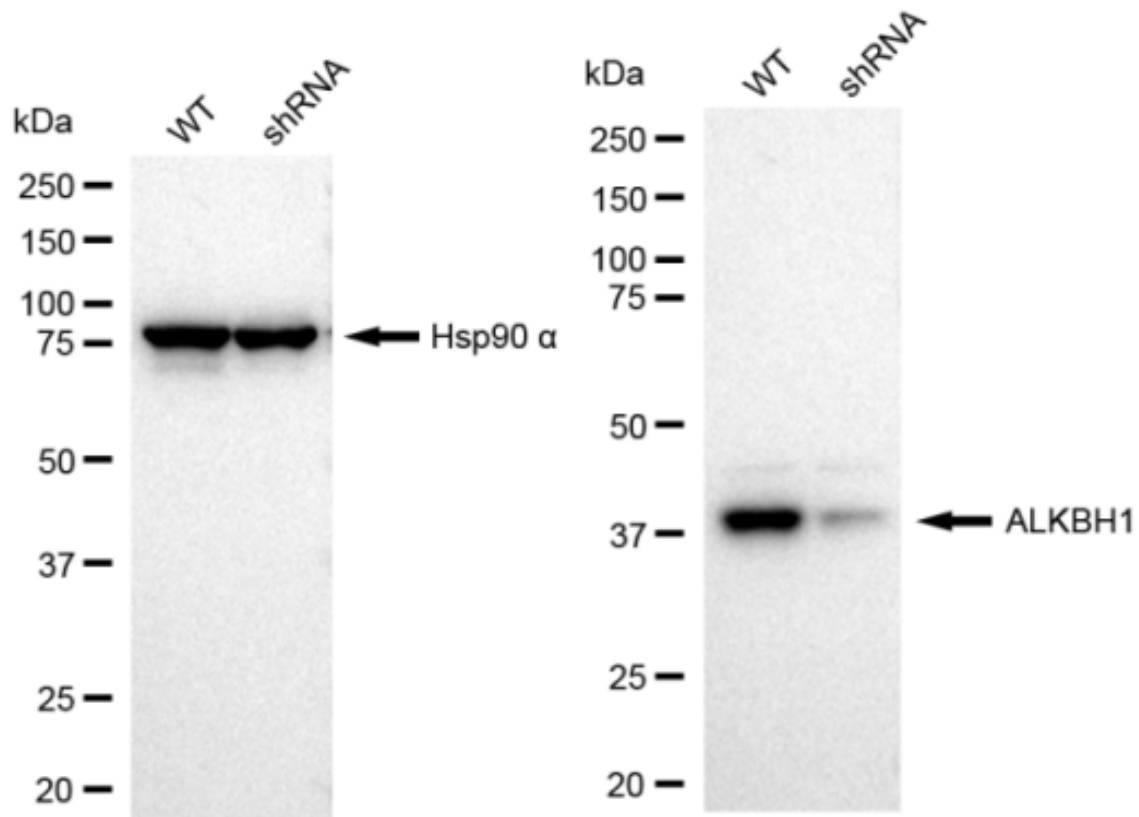
For general and specific antibody protocols please visit our website. Read all instructions before using this product.



Immunocytochemical staining of HepG2 cells with ALKBH1 antibody (KD-10066, 1:1,000) . Nuclei were stained blue with DAPI; ALKBH1 was stained magenta with Alexa Fluor® 647. Images were taken using Leica stellaris 5. Protein abundance based on laser Intensity and smart gain: medium. Scale bar: 20 μ m.



Western blotting analysis using anti-ALKBH1 antibody 1:5000 and HRP-conjugated goat anti-rabbit secondary antibody 1:20,000 respectively. Image was developed using FeQ™ ECL Substrate Kit .



Western blotting analysis using anti-ALKBH1 antibody 1:5,000 and HRP-conjugated goat anti-rabbit secondary antibody 1:20,000 respectively. Image was developed using FeQ™ ECL Substrate Kit .