



SunLong Biotech Co.,LTD  
Tel: 0086-571- 56623320 Fax:0086-571- 56623318  
E-mail:sales@sunlongbiotech.com  
www.sunlongbiotech.com

## **[KD-Validated] Anti-ALDOA Rabbit Monoclonal Antibody**

Cat No.: KD-10065

### **Aliases:**

ALDOA; Aldolase, Fructose-Bisphosphate A; Aldolase A, Fructose-Bisphosphate; Fructose-Bisphosphate Aldolase A; Lung Cancer Antigen NY-LU-1; Muscle-Type Aldolase; EC 4.1.2.13; ALDA; Epididymis Secretory Sperm Binding Protein Li 87p; Fructose-1,6-Bisphosphate Triosephosphate-Lyase; HEL-S-87p; GSD12

### **Background:**

UniProt Entry: [P04075](#);NCBI Gene Entry: [226](#)

### **Application Information**

Molecular Weight: Predicted, 39 kDa, observed, 36 kDa Clonality: Rabbit monoclonal antibody Clone ID: 24GB4710 Species Reactivity: Human, Mouse, Rat Applications Tested: Western Blotting (WB)

### **Immunogen**

A synthesized peptide derived from human Aldolase

### **Isotype**

Rabbit IgG

### **Storage Buffer**

Supplied in PBS (pH 7.4) containing 50% glycerol, and 0.02% sodium azide.

### Storage

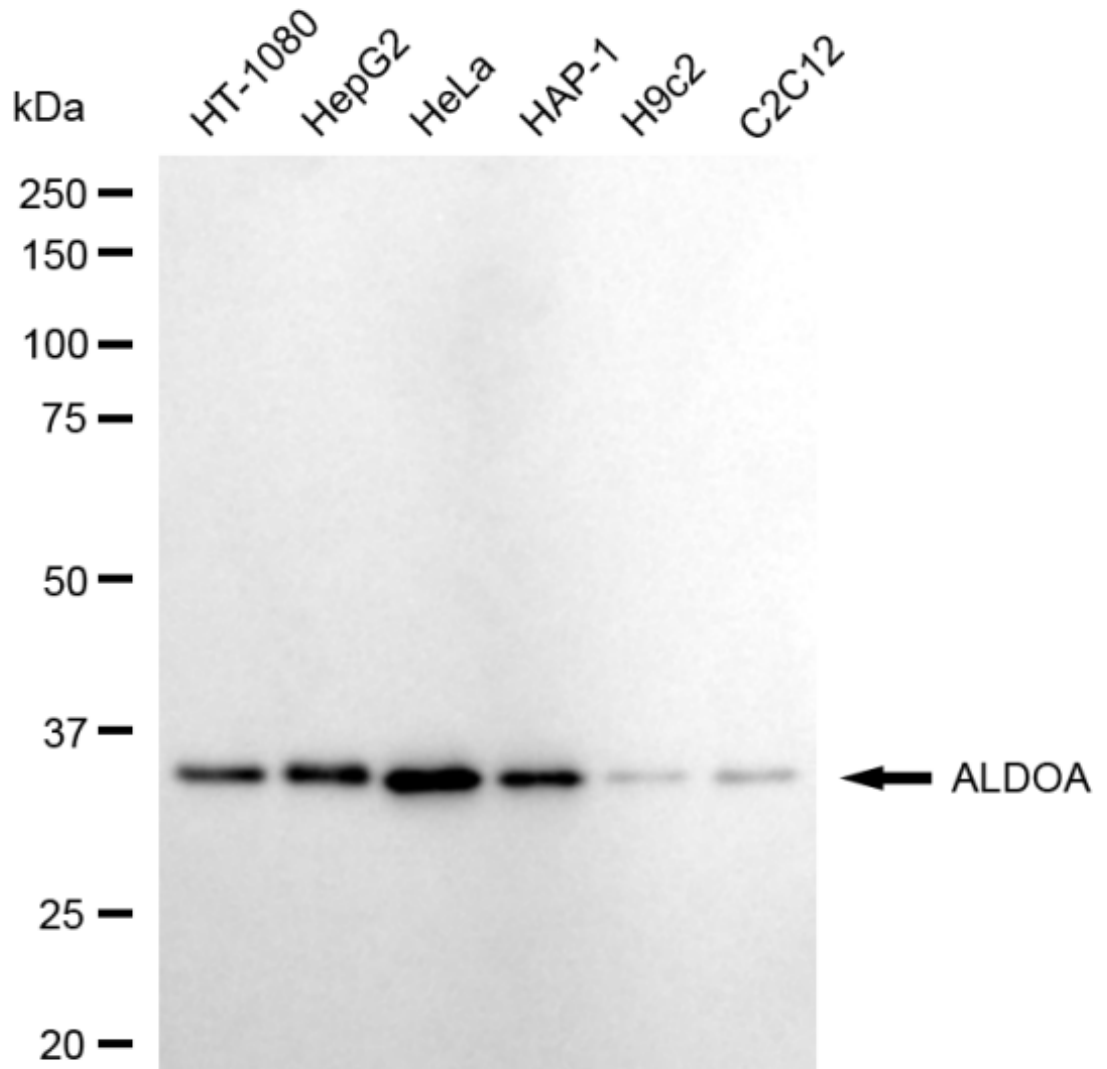
Store at -20 °C for one year.

### Recommended Dilutions

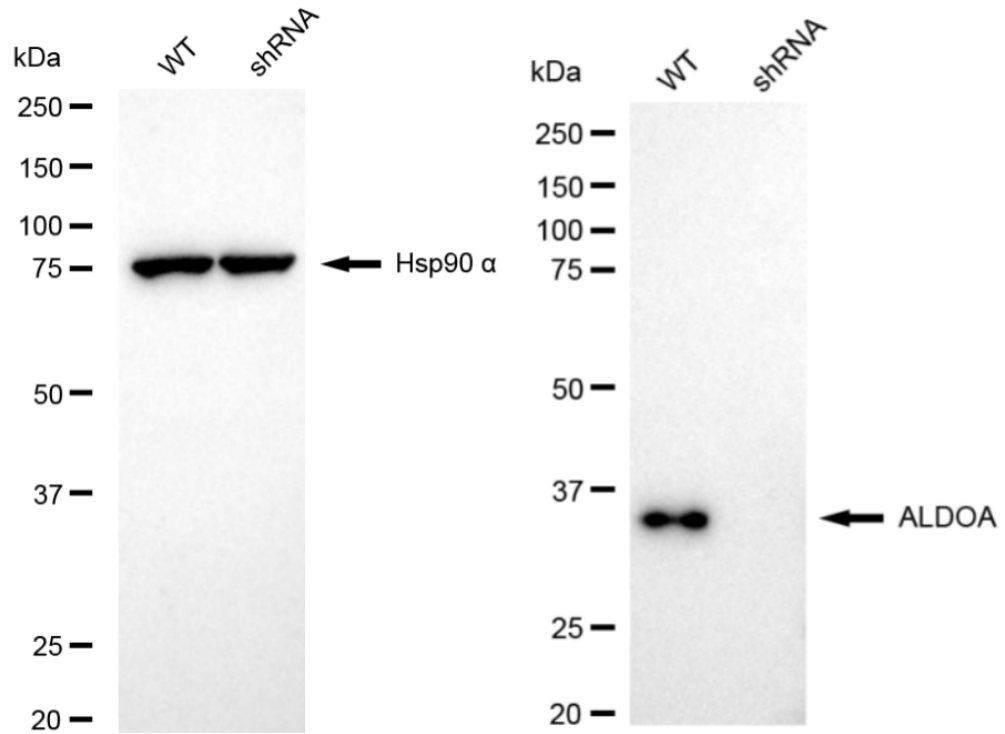
Western Blotting (WB): 1:1,000-1:5,000

### Protocols

For general and specific antibody protocols please visit our website. Read all instructions before using this product.



Western blotting analysis using anti-ALDOA antibody 1:5,000 and HRP-conjugated goat anti-rabbit secondary antibody 1:20,000 respectively. Image was developed using FeQ™ ECL Substrate Kit .



Western blotting analysis using anti-ALDOA antibody 1:5,000 and HRP-conjugated goat anti-rabbit secondary antibody 1:20,000 respectively. Image was developed using NaQ™ ECL Substrate Kit .