



SunLong Biotech Co.,LTD  
Tel: 0086-571- 56623320 Fax:0086-571- 56623318  
E-mail:sales@sunlongbiotech.com  
www.sunlongbiotech.com

## [KD-Validated] Anti-ALAS1 Rabbit Monoclonal Antibody

Cat No.: KD-10062

### Aliases:

ALAS1; 5'-Aminolevulinate Synthase 1; ALAS-H; ALAS3; 5-Aminolevulinate Synthase, Non-Specific, Mitochondrial; Aminolevulinate, Delta-, Synthase 1; 5-Aminolevulinic Acid Synthase 1; Delta-Aminolevulinate Synthase 1; Delta-ALA Synthase 1; EC 2.3.1.37; ALASH; ALAS; 5-Aminolevulinate Synthase, Nonspecific, Mitochondrial; Migration-Inducing Protein 4; EC 2.3.1; MIG4

### Background:

UniProt Entry: [P13196](#);NCBI Gene Entry: [211](#)

### Application Information

Molecular Weight: Predicted, 71 kDa, observed, 71 kDa Clonality: Rabbit monoclonal antibody Clone ID: 23GB3190 Species Reactivity: Human, Mouse, Rat Applications Tested: Western Blotting (WB)

### Immunogen

A synthesized peptide derived from human Alas1

### Isotype

Rabbit IgG

### Storage Buffer

Supplied in PBS (pH 7.4) containing 50% glycerol, and 0.02% sodium azide.

**Storage**

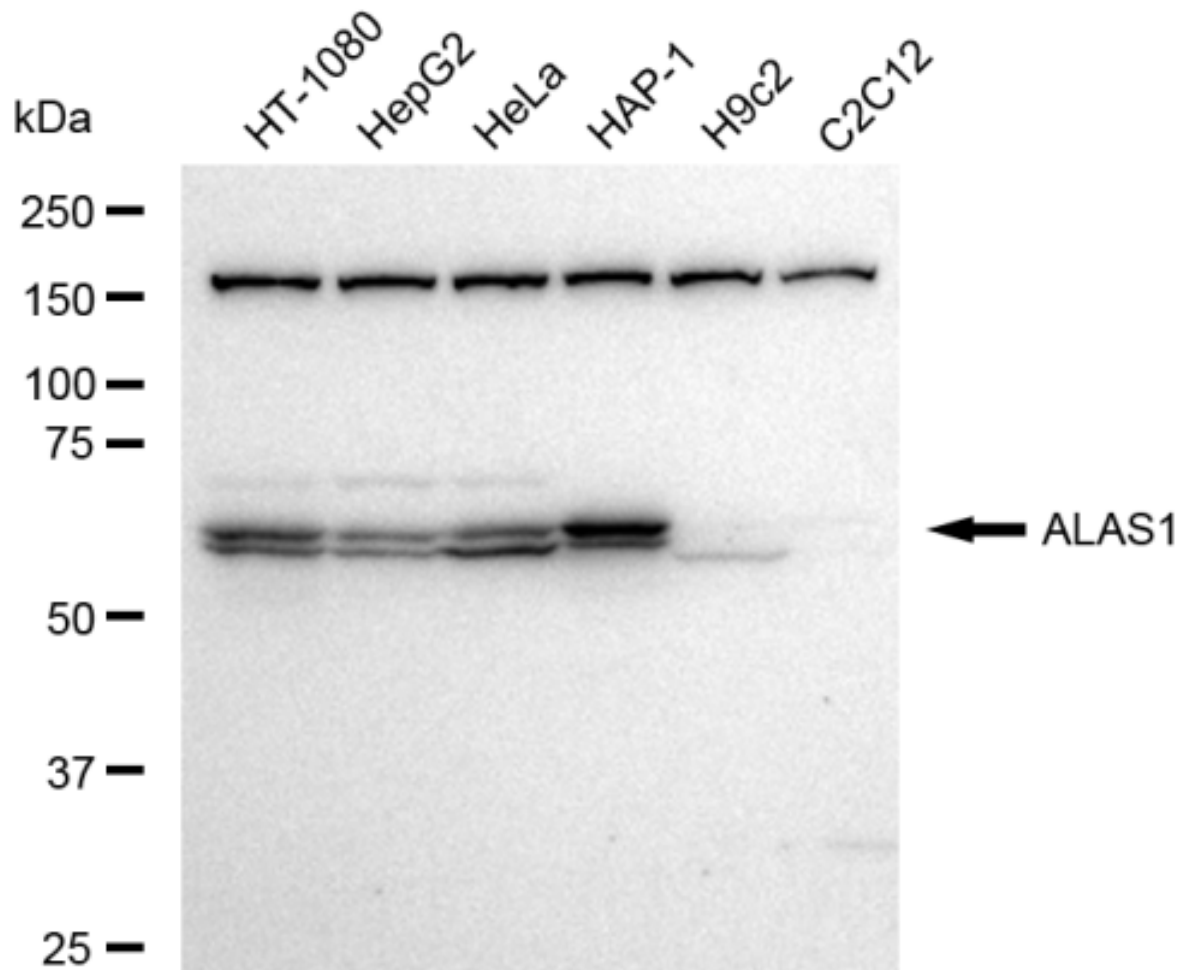
Store at -20 °C for one year.

**Recommended Dilutions**

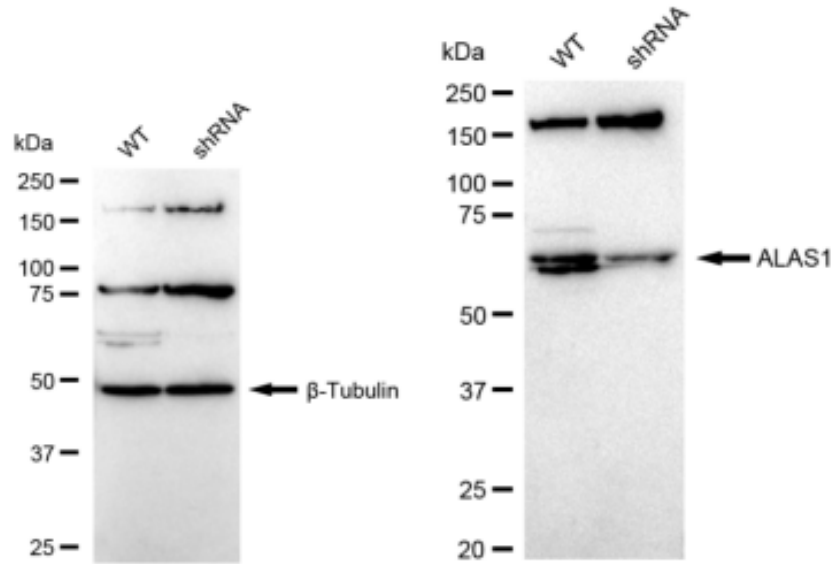
Western Blotting (WB): 1:1,000-1:5,000

**Protocols**

For general and specific antibody protocols please visit our website. Read all instructions before using this product.



Western blotting analysis using anti-ALAS1 antibody 1:5,000 and HRP-conjugated goat anti-rabbit secondary antibody 1:20,000 respectively. Image was developed using FeQ™ ECL Substrate Kit .



Western blotting analysis using anti-ALAS1 antibody 1:5,000 and HRP-conjugated goat anti-rabbit secondary antibody 1:20,000 respectively. Image was developed using FeQ™ ECL Substrate Kit .