



SunLong Biotech Co.,LTD
Tel: 0086-571- 56623320 Fax:0086-571- 56623318
E-mail:sales@sunlongbiotech.com
www.sunlongbiotech.com

[KD-Validated] Anti-Phospho-PRAS40 (T246) Rabbit Monoclonal Antibody

Cat No.: KD-10061

Aliases:

AKT1S1; AKT1 Substrate 1; PRAS40; 40 KDa Proline-Rich AKT Substrate; Proline-Rich AKT1 Substrate 1; MGC2865; Lobe; Proline-Rich Akt Substrate, 40 KDa; AKT1 Substrate 1 (Proline-Rich); AKT1 Substrate 1 (Proline Rich); LOBE

Background:

UniProt Entry: [Q96B36](#);NCBI Gene Entry: [84335](#)

Application Information

Molecular Weight: Predicted, 27 kDa, observed, 40 kDa Clonality: Rabbit monoclonal antibody Clone ID: 23GB3855 Species Reactivity: Human, Rat Applications Tested: Western Blotting (WB), Flow Cytometry (FCM), Immunocytochemistry (IC)

Immunogen

A synthesized peptide derived from human Phospho-PRAS40 (T246)

Isotype

Rabbit IgG

Storage Buffer

Supplied in PBS (pH 7.4) containing 50% glycerol, and 0.02% sodium azide.

Storage

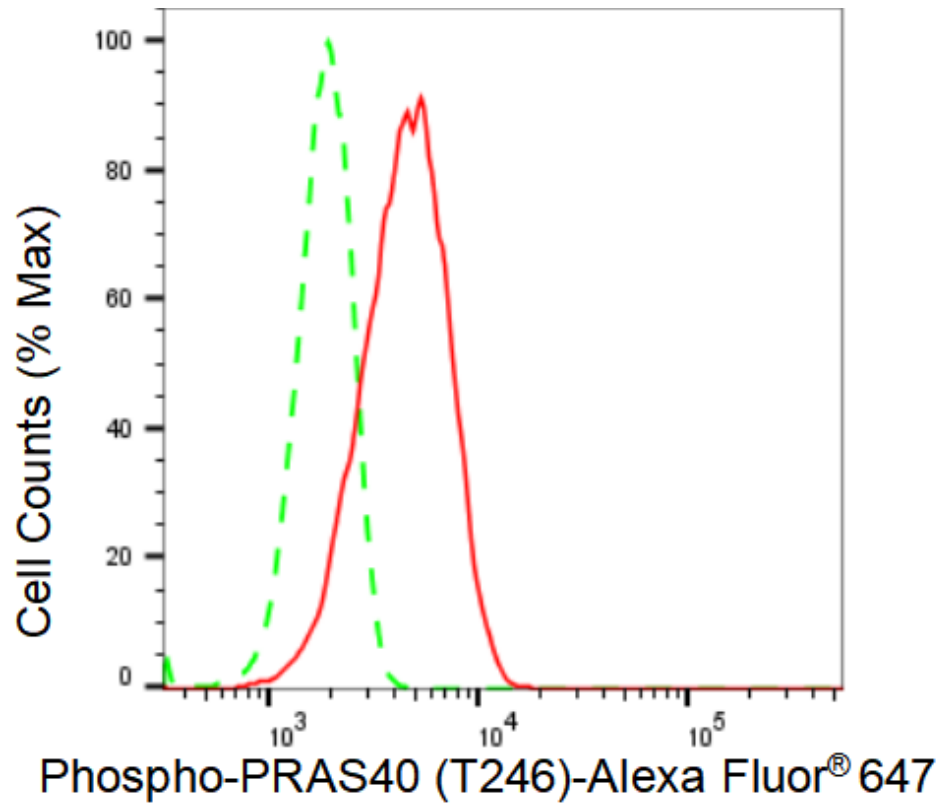
Store at -20 °C for one year.

Recommended Dilutions

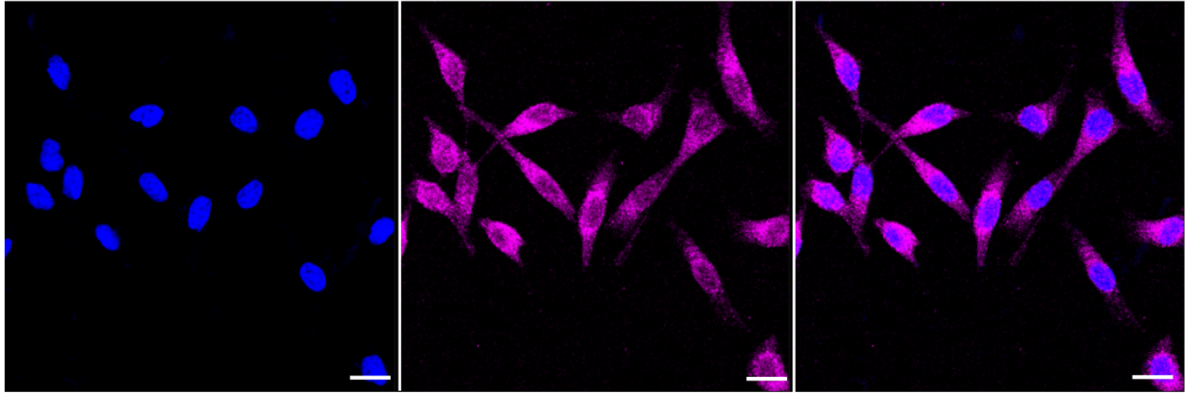
Western Blotting (WB): 1:1,000-1:5,000 Flow Cytometry (FCM): 1:2,000
Immunocytochemistry (IC): 1:1,000

Protocols

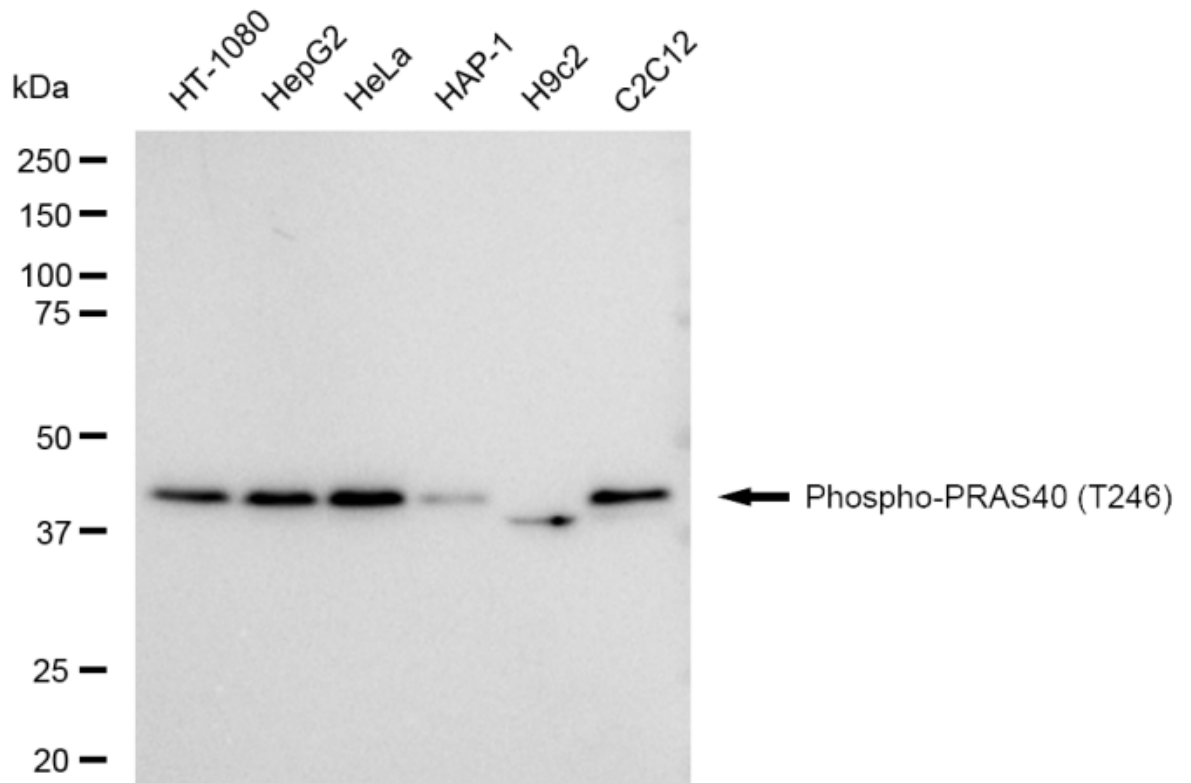
For general and specific antibody protocols please visit our website. Read all instructions before using this product.



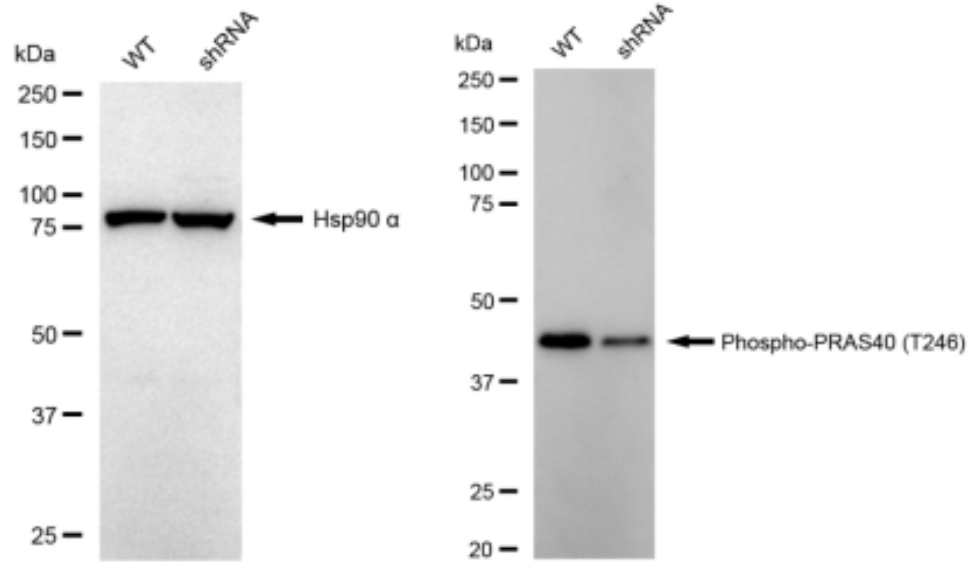
Flow cytometric analysis of Phospho-PRAS40 (T246) expression in HeLa cells using Phospho-PRAS40 (T246) antibody 1:2,000. Green, isotype control; red, Phospho-PRAS40 (T246).



Immunocytochemical staining of HeLa cells with Phospho-PRAS40 (T246) antibody 1:1,000. Nuclei were stained blue with DAPI; Phospho-PRAS40 (T246) was stained magenta with Alexa Fluor® 647. Images were taken using Leica stellaris 5. Protein abundance based on laser Intensity and smart gain: Low. Scale bar: 20 μ m.



Western blotting analysis using anti-Phospho-PRAS40 (T246) antibody 1:5,000 and HRP-conjugated goat anti-rabbit secondary antibody 1:20,000 respectively. Image was developed using FeQ™ ECL Substrate Kit .



Western blotting analysis using anti-Phospho-PRAS40 (T246) antibody 1:5,000 and HRP-conjugated goat anti-rabbit secondary antibody 1:20,000 respectively. Image was developed using FeQ™ ECL Substrate Kit .