



SunLong Biotech Co.,LTD  
Tel: 0086-571- 56623320 Fax:0086-571- 56623318  
E-mail:sales@sunlongbiotech.com  
www.sunlongbiotech.com

## **[KD-Validated] Anti-AKR1C1/AKR1C2 Rabbit Monoclonal Antibody**

Cat No.: KD-10055

### **Aliases:**

AKR1C1/2; Aldo-Keto Reductase Family 1 Member C1/2; DDH; DD1/2; HAKRC; MBAB; DDH1/2; Dihydrodiol Dehydrogenase 1/2; 20-Alpha (3-Alpha)-Hydroxysteroid Dehydrogenase; High-Affinity Hepatic Bile Acid-Binding Protein; Chlordecone Reductase Homolog HAKRC; Dihydrodiol Dehydrogenase 1/2; HBAB; Aldo-Keto Reductase Family 1, Member C1/2 (Dihydrodiol Dehydrogenase 1; 20-Alpha (3-Alpha)-Hydroxysteroid Dehydrogenase); Trans-1,2-Dihydrobenzene-1,2-Diol Dehydrogenase; Type II 3-Alpha-Hydroxysteroid Dehydrogenase; 20 Alpha-Hydroxysteroid Dehydrogenase; 20-Alpha-Hydroxysteroid Dehydrogenase; Hepatic Dihydrodiol Dehydrogenase; Dihydrodiol Dehydrogenase 1/2; Aldo-Keto Reductase C; Indanol Dehydrogenase; 20-ALPHA-HSD; 20-Alpha-HSD; EC 1.1.1.112; EC 1.1.1.209; EC 1.1.1.210; EC 1.1.1.357; EC 1.1.1.149; 2-ALPHA-HSD; EC 1.1.1.51; EC 1.1.1.53; EC 1.1.1.62; EC 1.3.1.20; EC 1.1.1.; EC 1.1.1; DD1/DD2; H-37; C9

### **Background:**

UniProt Entry: [Q04828/ P52895](#);NCBI Gene Entry: [Q04828/ 1645/1646](#)

### **Application Information**

Molecular Weight: Predicted, 37 kDa; observed, 35 kDa Clonality: Rabbit monoclonal antibody Clone ID: 23GB3175 Species Reactivity: Human, Mouse, Rat Applications Tested: Western Blotting (WB), Flow Cytometry (FCM), Immunocytochemistry (IC)

### **Immunogen**

A synthetic peptide of human AKR1C1 / AKR1C2

**Isotype**

Rabbit IgG

**Storage Buffer**

Supplied in PBS (pH 7.4) containing 50% glycerol, and 0.02% sodium azide.

**Storage**

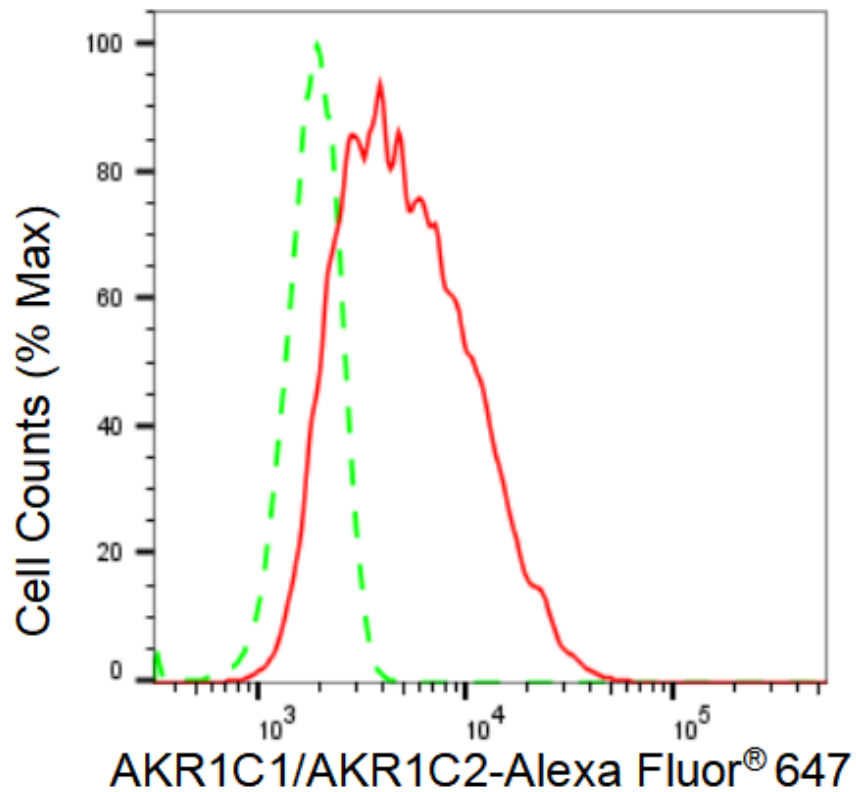
Store at -20 °C for one year.

**Recommended Dilutions**

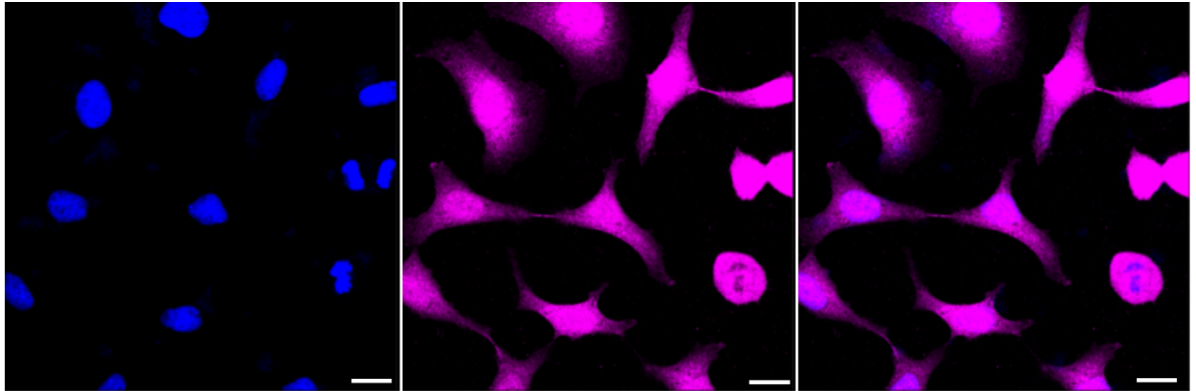
Western Blotting (WB): 1:1,000-1:5,000 Flow Cytometry (FCM): 1:2,000  
Immunocytochemistry (IC): 1:1,000

**Protocols**

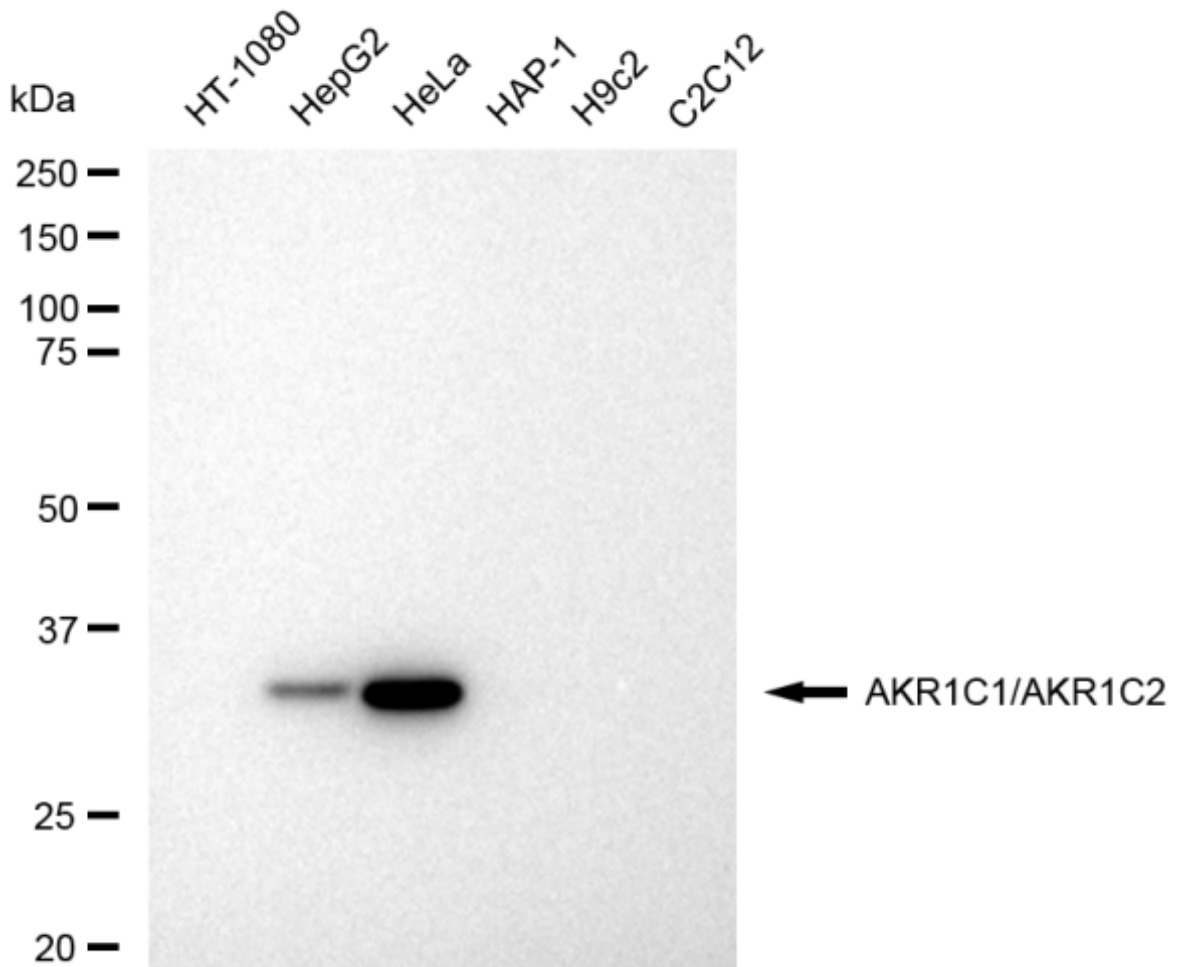
For general and specific antibody protocols please visit our website. Read all instructions before using this product.



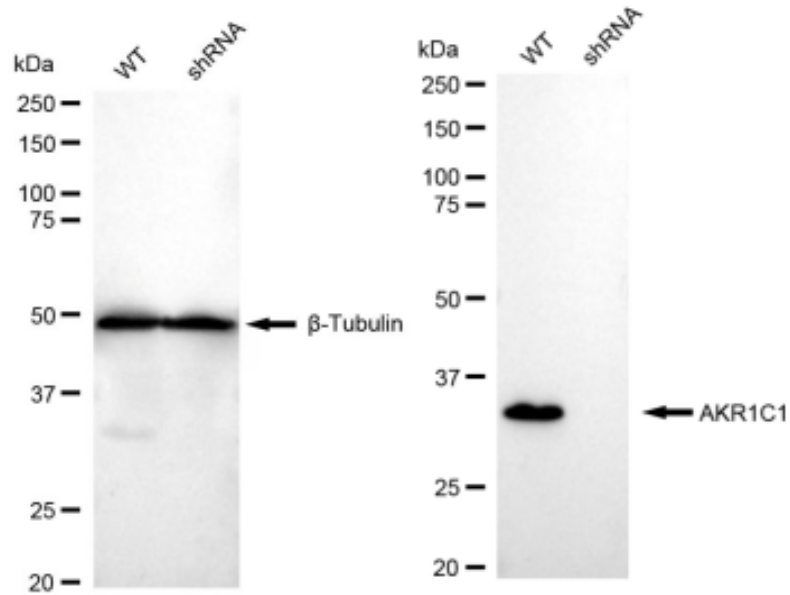
Flow cytometric analysis of AKR1C1/AKR1C2 expression in HeLa cells using AKR1C1/AKR1C2 antibody 1:2,000. Green, isotype control; red, AKR1C1/AKR1C2.



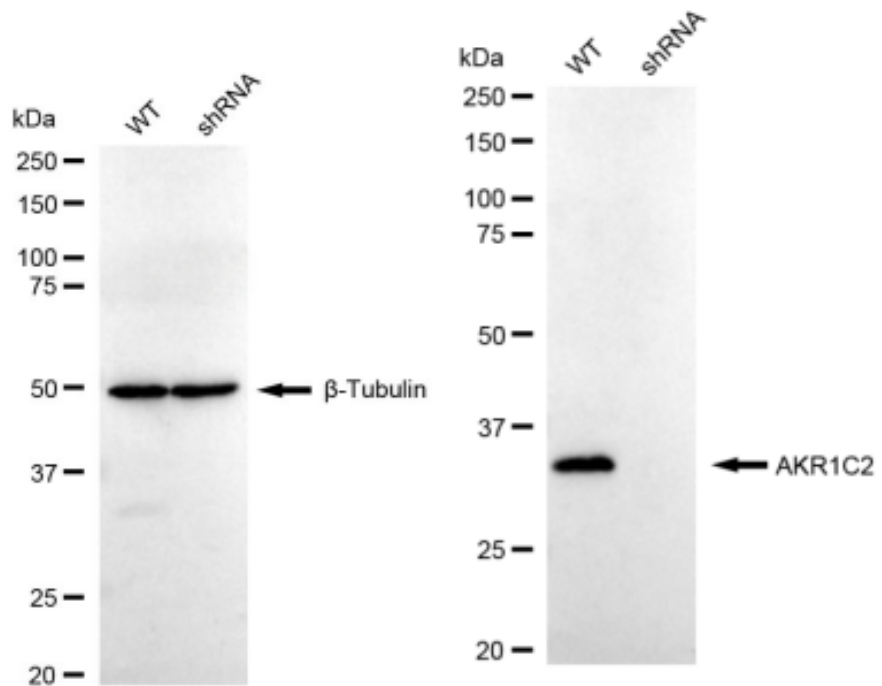
Immunocytochemical staining of HeLa cells with AKR1C1/AKR1C2 antibody 1:1,000. Nuclei were stained blue with DAPI; AKR1C1/AKR1C2 was stained magenta with Alexa Fluor® 647. Images were taken using Leica stellaris 5. Protein abundance based on laser Intensity and smart gain: High. Scale bar: 20  $\mu$ m.



Western blotting analysis using anti-AKR1C1/AKR1C2 antibody 1:5,000 and HRP-conjugated goat anti-rabbit secondary antibody 1:20,000 respectively. Image was developed using FeQ™ ECL Substrate Kit .



Western blotting analysis using anti-AKR1C1 antibody 1:5,000 and HRP-conjugated goat anti-rabbit secondary antibody 1:20,000 respectively. Image was developed using FeQ™ ECL Substrate Kit .



Western blotting analysis using anti-AKR1C2 antibody 1:5,000 and HRP-conjugated goat anti-rabbit secondary antibody 1:20,000 respectively. Image was developed using FeQ™ ECL Substrate Kit .