



SunLong Biotech Co.,LTD
Tel: 0086-571- 56623320 Fax:0086-571- 56623318
E-mail:sales@sunlongbiotech.com
www.sunlongbiotech.com

[KD-Validated] Anti-A-kinase anchoring protein 8 Rabbit Monoclonal Antibody

Cat No.: KD-10054

Aliases:

AKAP8; A-Kinase Anchoring Protein 8; AKAP95; A Kinase (PRKA) Anchor Protein 8; A-Kinase Anchor Protein, 95kDa; A-Kinase Anchor Protein 8; AKAP 95; AKAP-8; A-Kinase Anchor Protein 95 KDa; DKFZp586B1222; DKFZP586B1222; AKAP-95

Background:

UniProt Entry: [O43823](#);NCBI Gene Entry: [10270](#)

Application Information

Molecular Weight: Predicted, 76 kDa, observed, 95 kDa Clonality: Rabbit monoclonal antibody Clone ID: 23GB2970 Species Reactivity: Human Applications Tested: Western Blotting (WB), Flow Cytometry (FCM), Immunocytochemistry (IC)

Immunogen

A synthesized peptide derived from AKAP 95

Isotype

Rabbit IgG

Storage Buffer

Supplied in PBS (pH 7.4) containing 50% glycerol, and 0.02% sodium azide.

Storage

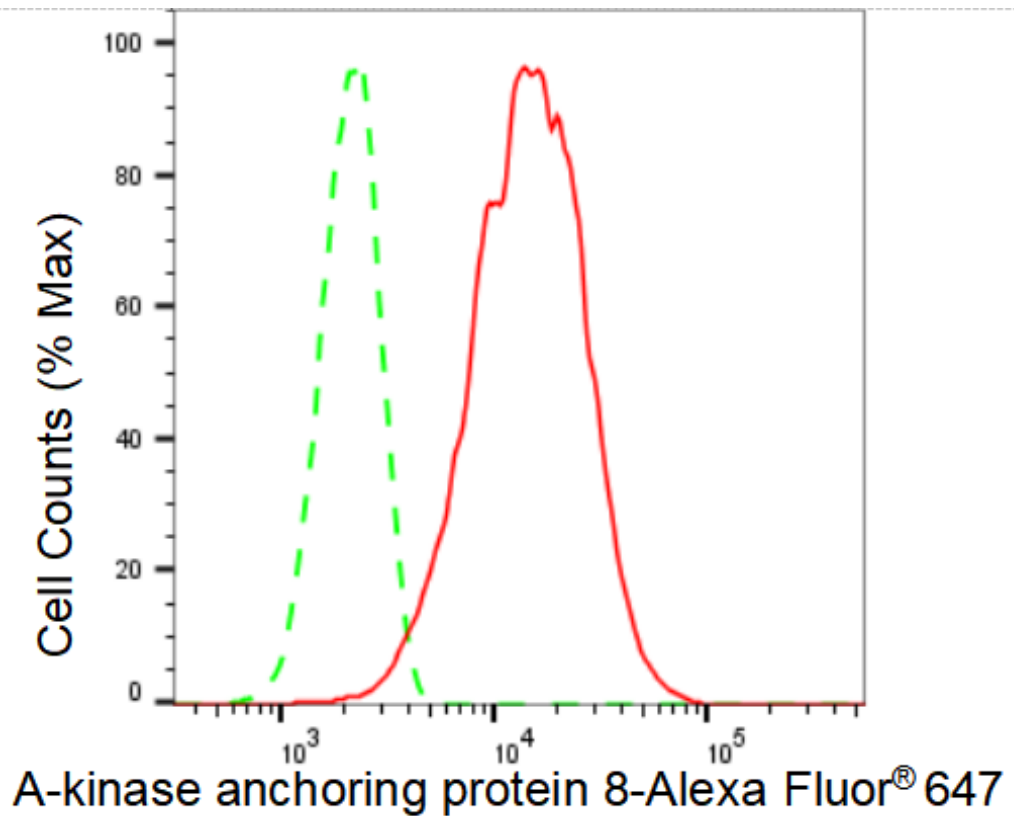
Store at -20 °C for one year.

Recommended Dilutions

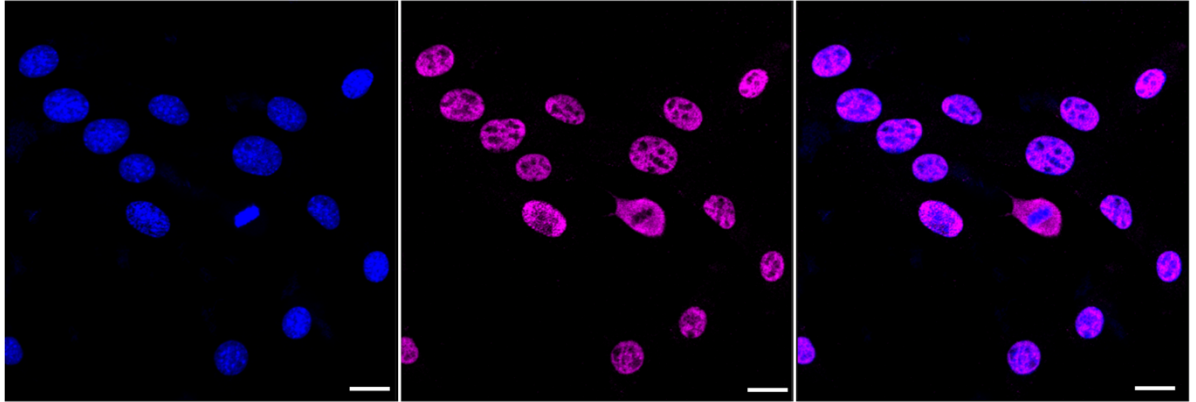
Western Blotting (WB): 1:1,000-1:5,000 Flow Cytometry (FCM): 1:2,000
Immunocytochemistry (IC): 1:1,000

Protocols

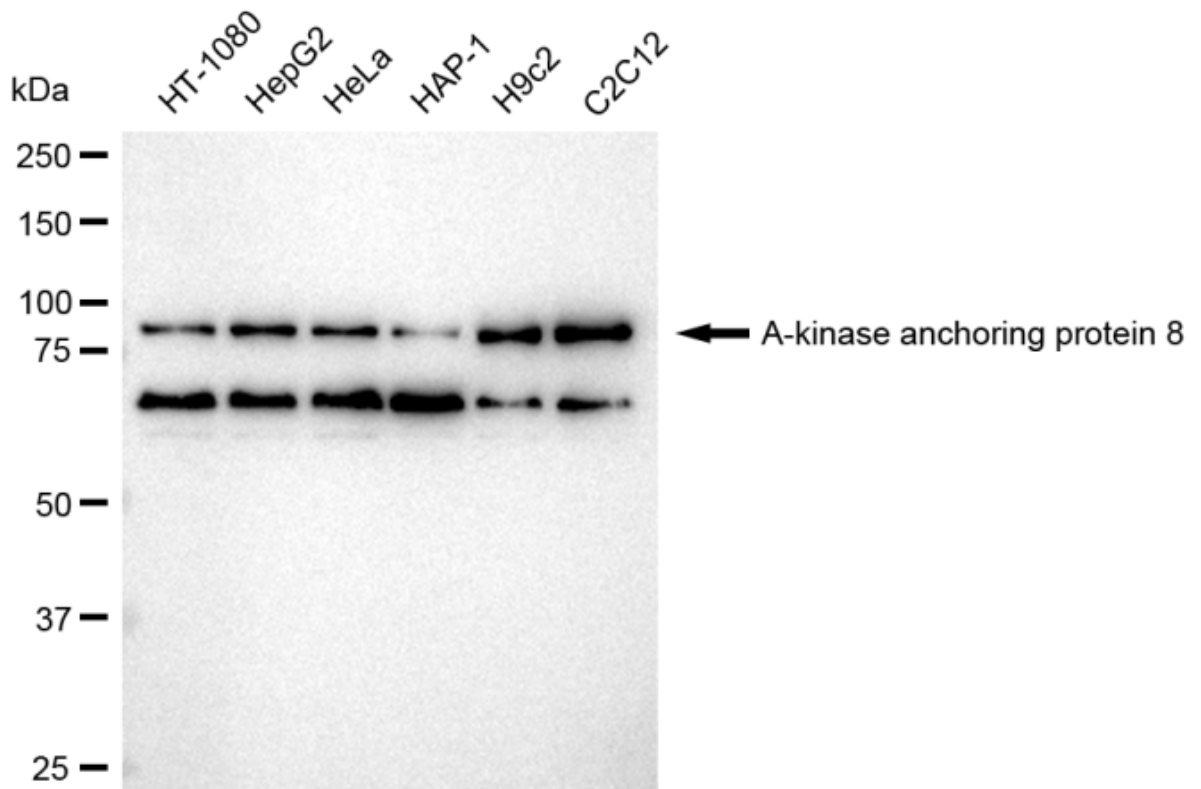
For general and specific antibody protocols please visit our website. Read all instructions before using this product.



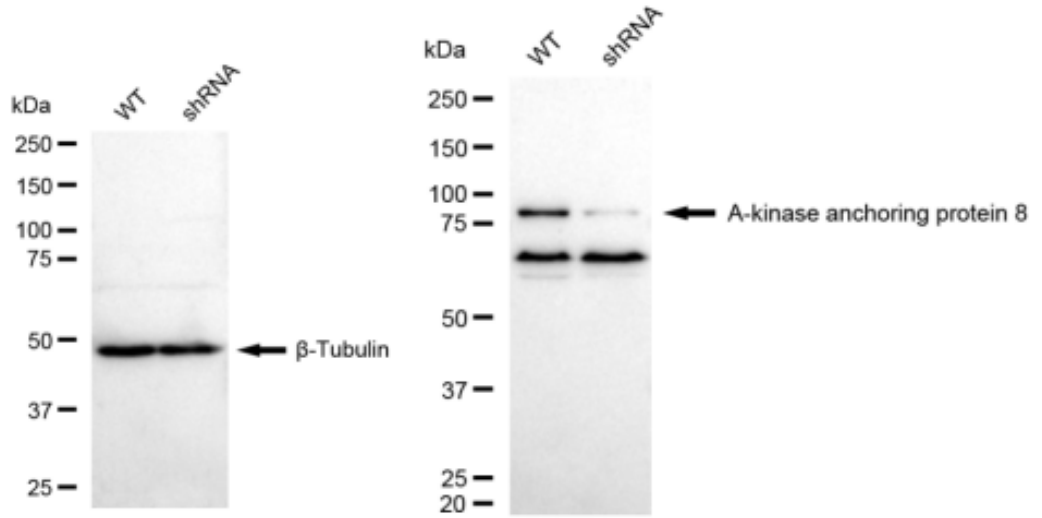
Flow cytometric analysis of A-kinase anchoring protein 8 expression in C2C12 cells using A-kinase anchoring protein 8 antibody 1:2,000. Green, isotype control; red, A-kinase anchoring protein 8.



Immunocytochemical staining of C2C12 cells A-kinase anchoring protein 8 antibody 1:1,000. Nuclei were stained blue with DAPI; A-kinase anchoring protein 8 was stained magenta with Alexa Fluor® 647. Images were taken using Leica stellaris 5. Protein abundance based on laser Intensity and smart gain: High. Scale bar: 20 μ m.



Western blotting analysis using anti-A-kinase anchoring protein 8 antibody 1:5,000 and HRP-conjugated goat anti-rabbit secondary antibody 1:20,000 respectively. Image was developed using FeQ™ ECL Substrate Kit .



Western blotting analysis using anti-A-kinase anchoring protein 8 antibody 1:5,000 and HRP-conjugated goat anti-rabbit secondary antibody 1:20,000 respectively. Image was developed using FeQ™ ECL Substrate Kit .