



SunLong Biotech Co.,LTD
Tel: 0086-571- 56623320 Fax:0086-571- 56623318
E-mail:sales@sunlongbiotech.com
www.sunlongbiotech.com

[KD-Validated] Anti-Adenylate kinase 4 Rabbit Monoclonal Antibody

Cat No.: KD-10053

Aliases:

AK4; Adenylate Kinase 4; AK3L1; AK3; Adenylate Kinase 4, Mitochondrial; Adenylate Kinase 3-Like 1; AK 4; GTP:AMP Phosphotransferase AK4, Mitochondrial; Adenylate Kinase Isoenzyme 4, Mitochondrial; Epididymis Secretory Sperm Binding Protein; Nucleoside-Triphosphate-Adenylate Kinase; Mitochondrial Adenylate Kinase-3; GTP:AMP Phosphotransferase AK4; ATP-AMP Transphosphorylase; Adenylate Kinase 3-Like; Adenylate Kinase 3; EC 2.7.4.10; EC 2.7.4.6; EC 2.7.4.3; EC 2.7.4; AK3L2

Background:

UniProt Entry: [P27144](#);NCBI Gene Entry: [205](#)

Application Information

Molecular Weight: Predicted, 25 kDa, observed, 25 kDa Clonality: Rabbit monoclonal antibody Clone ID: 23GB4755 Species Reactivity: Human, Mouse, Rat Applications Tested: Western Blotting (WB), Flow Cytometry (FCM)

Immunogen

A synthesized peptide derived from human Adenylate kinase 4

Isotype

Rabbit IgG

Storage Buffer

Supplied in PBS (pH 7.4) containing 50% glycerol, and 0.02% sodium azide.

Storage

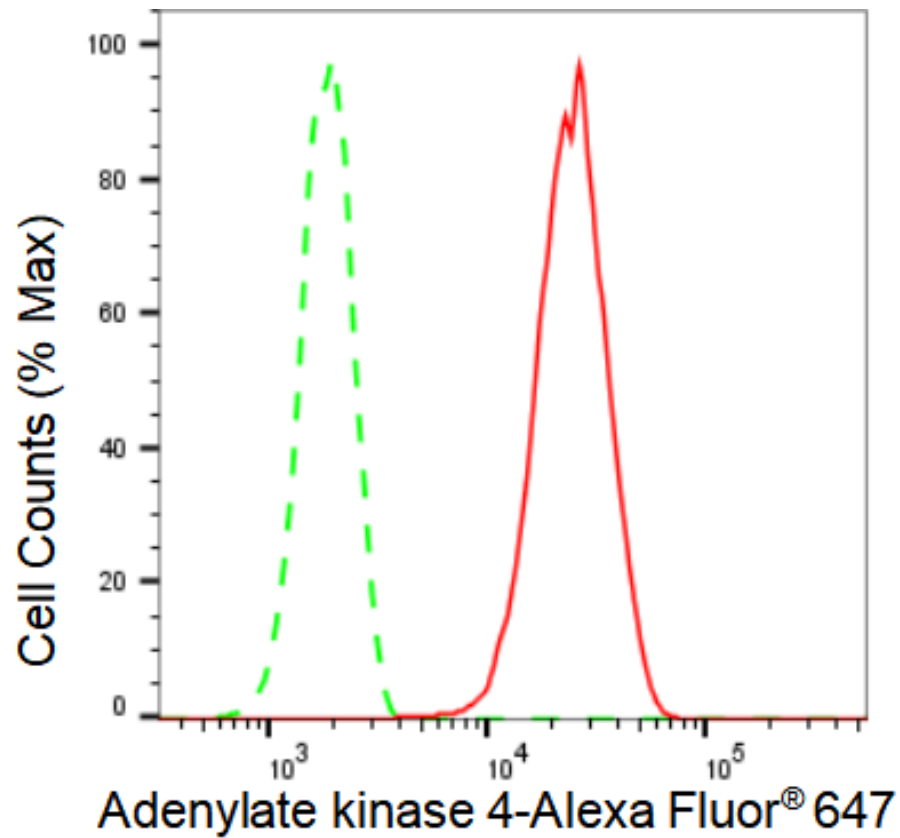
Store at -20 °C for one year.

Recommended Dilutions

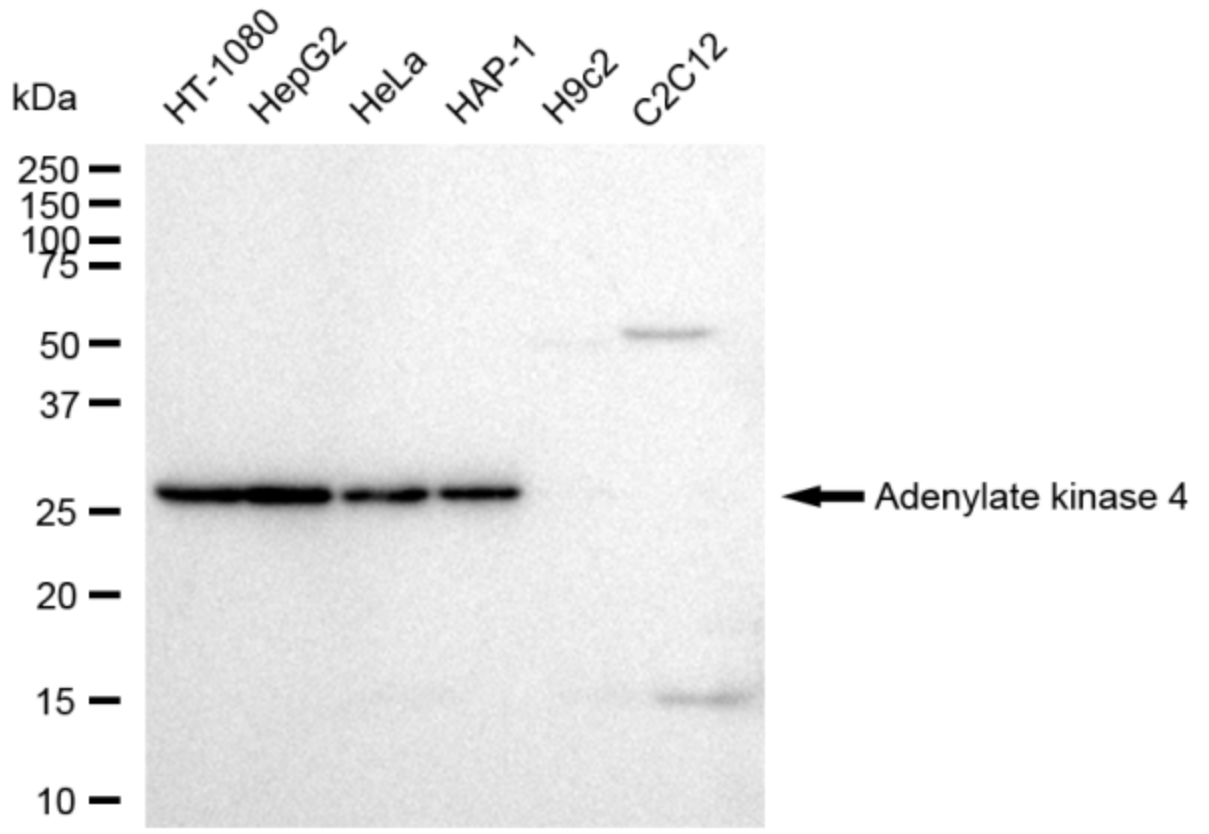
Western Blotting (WB): 1:1,000-1:5,000 Flow Cytometry (FCM): 1:2,000

Protocols

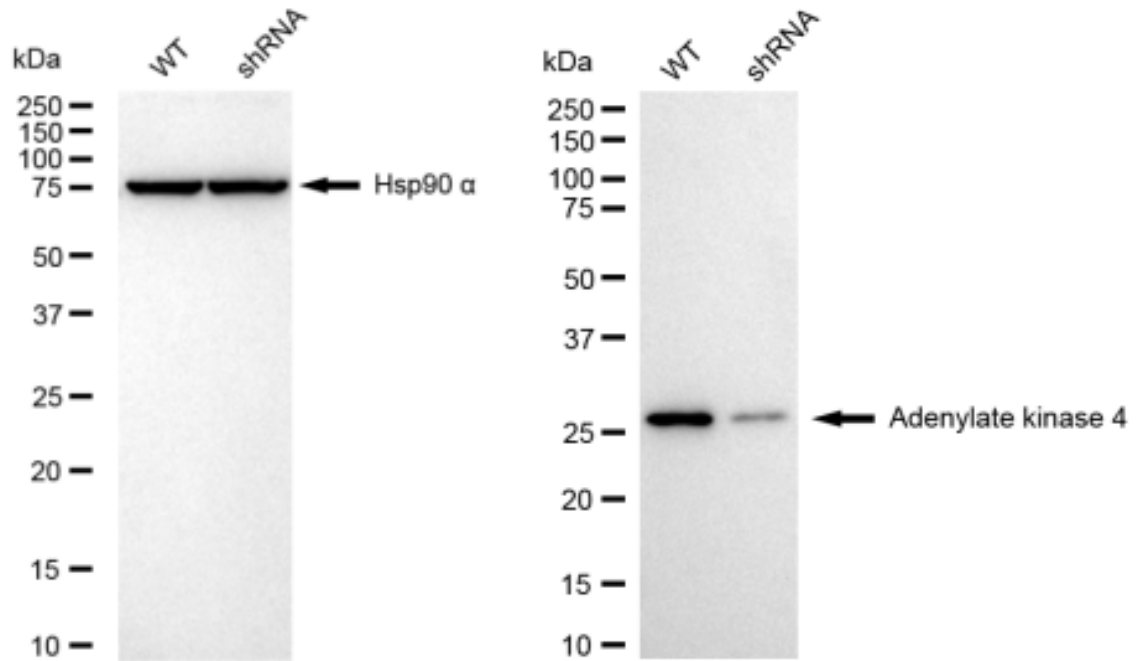
For general and specific antibody protocols please visit our website. Read all instructions before using this product.



Flow cytometric analysis of Adenylate kinase 4 expression in HepG2 cells using Adenylate kinase 4 antibody 1:2,000. Green, isotype control; red, Adenylate kinase 4.



Western blotting analysis using anti-Adenylate kinase 4 antibody 1:5,000 and HRP-conjugated goat anti-rabbit secondary antibody 1:20,000 respectively. Image was developed using FeQ™ ECL Substrate Kit .



Western blotting analysis using anti-Adenylate kinase 4 antibody 1:5,000 and HRP-conjugated goat anti-rabbit secondary antibody 1:20,000 respectively. Image was developed using FeQ™ ECL Substrate Kit .