



Mouse Anti-Cytokeratin 15 antibody (BH0201)

BH0201

BH0201

Product Name:	Cytokeratin 15
Chinese Name:	小鼠抗细胞角蛋白15单克隆抗体
Organism Species:	Mouse
Clonality:	Monoclonal
克隆号:	3H5
React Species:	Human,
Applications:	IHC-P=1:100-500IHC-F=1:100-500ICC=1:100-500IF=1:100-500 (Paraffin sections need antigen repair) not yet tested in other applications. optimal dilutions/concentrations should be determined by the end user.
Molecular weight:	49kDa
Cellular localization:	The nucleuscytoplasmicThe cell membrane
Form:	Lyophilized or Liquid
Concentration:	1mg/ml
immunogen:	KLH conjugated synthetic peptide derived from human Cytokeratin 15:
Lsotype:	IgG1
Purification:	affinity purified by Protein G
Storage Buffer:	0.01M TBS(pH7.4) with 1% BSA, 0.03% Proclin300 and 50% Glycerol.
Storage:	Store at -20 °C for one year. Avoid repeated freeze/thaw cycles. The lyophilized antibody is stable at room temperature for at least one month and for greater than a year when kept at -20°C. When reconstituted in sterile pH 7.4 0.01M PBS or diluent of antibody the antibody is stable for at least two weeks at 2-4 °C.
PubMed:	PubMed
Product Detail:	The protein encoded by this gene is a member of the keratin gene family. The keratins are intermediate filament proteins responsible for the structural integrity of epithelial cells and are subdivided into cytokeratins and hair keratins. Most of the type I cytokeratins consist of acidic proteins which are arranged in pairs of heterotypic keratin chains and are clustered in a region on chromosome 17q21.2. [provided by RefSeq].

Subunit:

Heterotetramer of two type I and two type II keratins.

Subcellular Location:

Expressed in a discontinuous manner in the basal cell layer of adult skin epidermis, but continuously in the basal layer of fetal skin epidermis and nail. Also expressed in the outer root sheath above the hair bulb in hair follicle (at protein level). Expressed homogeneously in all cell layers of the esophagus and exocervix, but detected in the basal cell layer only of oral mucosa, skin and in the basal plus the next two layers of the suprabasal epithelium of the palate.

Similarity:

Belongs to the intermediate filament family.

SWISS:

P19012

Gene ID:

3866

Database links:

[Entrez Gene: 3866](#)Human

[Entrez Gene: 16665](#)Mouse

[Entrez Gene: 287700](#)Rat

[Oimim: 148030](#)Human

[SwissProt: P19012](#)Human

[SwissProt: Q61414](#)Mouse

[SwissProt: Q6IFV3](#)Rat

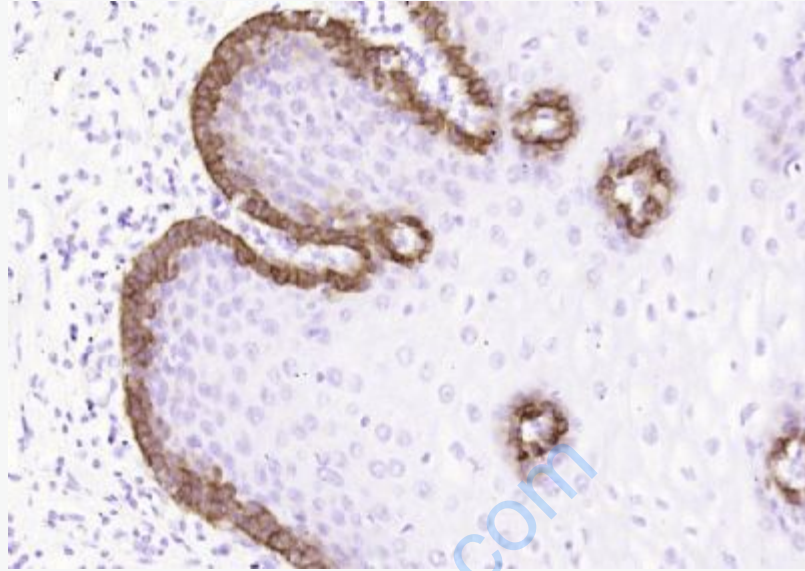
[Unigene: 654570](#)Human

[Unigene: 440010](#)Mouse

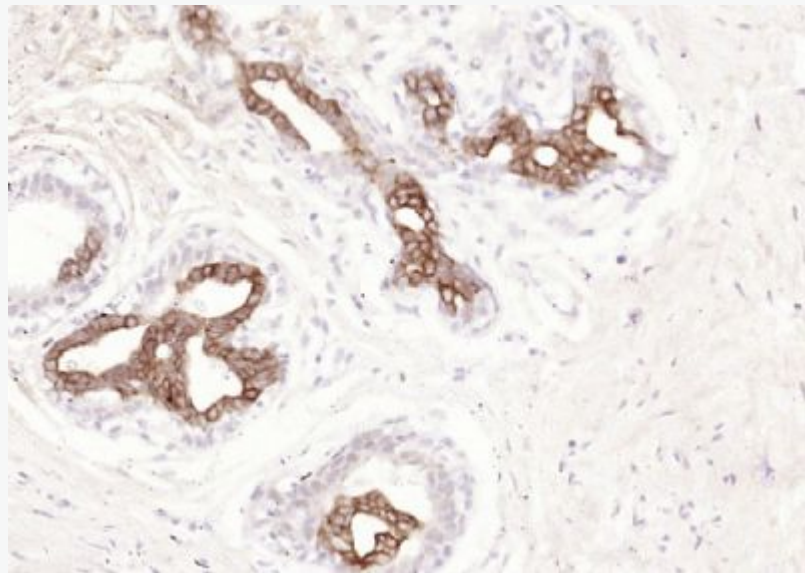
[Unigene: 153568](#)Rat

Important Note:

This product as supplied is intended for research use only, not for use in human, therapeutic or diagnostic applications.



Paraformaldehyde-fixed, paraffin embedded (human esophagus); Antigen retrieval by boiling in sodium citrate buffer (pH6.0) for 15min; Block endogenous peroxidase by 3% hydrogen peroxide for 20 minutes; Blocking buffer (normal goat serum) at 37°C for 30min; Antibody incubation with (Cytokeratin 15) Monoclonal Antibody, Unconjugated (BH0201) at 1:200 overnight at 4°C, followed by operating according to SP Kit(Mouse)(sp-0024) instructions and DAB staining.



Picture:

Paraformaldehyde-fixed, paraffin embedded (human breast); Antigen retrieval by boiling in sodium citrate buffer (pH6.0) for 15min; Block endogenous peroxidase by 3% hydrogen peroxide for 20 minutes; Blocking buffer (normal goat serum) at 37°C for 30min; Antibody incubation with (Cytokeratin 15) Monoclonal Antibody, Unconjugated (BH0201) at 1:200 overnight at 4°C, followed by operating according to SP Kit(Mouse)(sp-0024) instructions and DAB staining.

www.sunlongbiotech.com